

Concrete washouts and water treatment solutions

In this issue of Building and Construction Review, we are pleased to select Kelly Tanks as our Water Treatment Solutions Company of the Year.

In 2012, Mark Stubbs was running a successful contracting company specialising in land drainage when Kelly Bryant started as his administrator. Mark introduced Kelly to working with water, creating balancing ponds, creating wetlands and wildlife habitat. The pair developed a long-standing relationship with the wildlife trust, further instilling in them the importance of protecting the environment - the core of their business ever since.

Mark's determination and passion are evidenced not only by the successful businesses he runs, but also by the odds he overcame to build them. Having suffered a near fatal accident, Mark spent eleven months in hospital and was told he would never work again. However, his commitment and unwavering work ethic drove him to not only return to a working career, but to excel in it, surpassing all expectations.

When Kelly joined, Mark was already harbouring ideas about introducing water treatment systems into his hire fleet. Kelly having also faced adversity, experiencing homelessness in her teenage years, was keen to prove her value. Full of resilience and compassion, she endeavoured to assist Mark in exploring new opportunities.

When Mark was asked if he was interested in buying a cylindrical water storage tank, things began to move forward. He accepted the tank, hoping that once refurbished it could be hired out, and during the refurbishment Mark and Kelly began discussing developing a water treatment system for use on construction sites.

Their first ideas were to create a basic settlement tank, and Kelly drew up a plan. Over the next year they continued building, while learning more about water treatment, onsite requirements, and the drawbacks of systems already on the market, and they realised



that sites wanted systems that were simple to set up, simple to use and simple to empty.

The pair then designed the 'WTS' - a settlement tank that includes a cage to housing flocculant blocks to enable simple flocculation, an adjustable oil skimmer, a compartment for coalescing media to optimise settlement, and a hopper bottom and dump valve to easily remove settled solids.

Next Mark and Kelly introduced the 'Sack Frame' to house sacks that would further filter waste water and retain suspended solids. Unfortunately, they found existing sacks were essentially builders sacks with a felt liner sewn that quickly became blocked and ineffective. Rather than give up on the premise, the pair sourced a liner and created the 'Adsorption Sack', a sack specifically designed to enable solids to attach to the surface of the liner, eventually becoming heavy enough to drop into the sack leaving the liner clear to continue filtering.

Interest for the systems quickly grew and in 2013 they were asked to commission systems for J Murphy & Sons and JN Bentley. At this point Mark decided to separate the growing water treatment fleet from his contracting company and set up a new company called 'Kelly Tanks', and Kelly was invited to become



a director.

Soon they realised the Adsorption sack could be used for many purposes, including the retention and filtration of cementitious particles in concrete wash water. Kelly designed new plans and the CWS Concrete Washout was born. A cost-effective alternative to skips and suction wagons, the CWS is a 'plug and go' system that allows concrete equipment and wagons to be safely washed-off onsite by separating the solids, recycling the water and neutralising the pH.

Demand for Kelly Tanks' systems grew and soon the brand was receiving recognition. Kelly became a shareholder in 2017 and the pair continued to add products and systems to their fleet, and they then began to design pH treatment systems that would proportionally dose using a pH reducing liquid.

They also discovered that existing methods for reducing pH levels were wasteful in their overuse of CO2 and so designed systems that would only dose the required amount. This method can be found in their GWS and HpC system, designed to retain the solids and neutralise the pH of the water captured in Hydro demolition, and again in their Modular pH dosing systems.

Whilst their fleet has grown, so have their facilities and team, known as TeamKT. Almost ten years later, Kelly Tanks has become an industry leader in concrete washouts, boasting the UK's largest hire fleet whilst continuing to supply water treatment systems worldwide. Mark and Kelly consistently release new products each year and their innovative product range is complemented by their ongoing commitment to excellent quality and customer service.

For more information:

T 01889 508944
www.kellytanks.co.uk



Bluerun Ltd
 Turn to page **02**



Southside Waterjet Ltd
 Turn to page **03**



Predator
 Turn to page **04**



Modcon Cabins
 Turn to page **05**



BONA
 Turn to page **08**

WARDELL
 LONG LENGTHS

Wardell Long Lengths
 Turn to page **24**



Joinery craftsmanship from Bluerun

In this issue, we've chosen to recommend Bluerun for the quality and show of design in its unique craftsmanship capabilities for bespoke joinery that is made without the aid of CAD or CNC.

Bluerun manufacture quality, bespoke joinery to the domestic and commercial markets. From window packers, windows and doors, to thresholds, staircases and everything in between, "we believe every piece of bespoke joinery has been manufactured with care," stated Dee Newman, Finance Director.



Since 1991, Bluerun have been one of the industry leaders in bespoke joinery. The company was initially established by John Jones, who is the current MD and Peter Clayden, but when Peter resigned in 2008 John, his wife Doreen and son Jeremy took over as sole owners. As a family they each bring their own expertise to the team, and to enable John to semi-retire in December 2019 his daughter, Dee Newman joined the team as Finance Director to help oversee the day-to-day running of the company as well as manage the accounts, payroll, quotations and managerial duties.

Out of its workshop based in Wimbish, near Saffron Walden, Bluerun provides a manufacturing service of the highest quality. "Bluerun designed a beautiful bespoke replacement for an external door at our listed house. The staff are all very helpful and friendly and I really appreciated their skilled craftsmanship. I would definitely ask them to make things for me in the future," stated one satisfied customer.

Bluerun's craftsmanship is admired by many customers who place an invaluable trust in the company to



produce to their exact requirements. "Where we are unique is that we discuss any finer details with the client to ensure we get it to their requirements. Most pieces have to be hand finished using hand tools, to make sure it's a quality finished product. We also have an in-house spray booth, and can obtain colour matched paint, so if a client needs something in a sprayed finish, we have that capability," Dee went on to say "we don't have brochures or even a showroom as everything is made to measure. If we've made it, then it's been ordered by a client. Our website has a lot of examples of our previous work."

And, of course its portfolio of previous work does embellish the sheer artistry, creativity and skill of each experienced and highly qualified bench joiner machinist



we only signed up for TrustPilot in 2020, and whilst not everyone leaves a review, you will see that the ones we have are all 5 stars, of which we are very proud and appreciative of our clients' time taken to leave these reviews," mentioned Dee.

Of course the last two years has been a difficult period for all businesses to navigate, and for Bluerun it has learnt to adapt to new working conditions. Dee explained, "like others in the building industry, we have found that we have had more enquiries from the domestic market whilst people were working from home. We were very quiet during the initial two or three months after the COVID-19 lockdown, but once it was confirmed that we could continue to operate (as we are a manufacturer), we found we were busier than usual, historically."

Overcoming obstacles and challenges comes naturally to Bluerun and it's a true testament to its services that the business has continued to grow through such challenging times in the industry. Looking ahead, we asked Dee what the company had planned in terms of the future. She answered, "it would be nice to expand the workforce, but we don't feel the economy is in a secure enough place right now. In exciting news, we are currently working on a brand-new updated website that is due to go live later this year/early 2023."

For more information, see below:
T 01799 599995
dee@bluerunltd.co.uk
www.bluerunltd.co.uk



that is part of the Bluerun team. From interior furniture to large scale external structures, the scope of Bluerun's joinery is vast and caters to a number of various sectors and industries.

It could be that you're looking for an entirely new shop front for your business or even just something to fill that oddly shaped gap in your bedroom, Bluerun only produces purpose made joinery to fit all client's personalised drawings and specifications.

The ability to think outside the box comes naturally to Bluerun when it comes to the scope of its joinery. Its workshop capabilities allow for any item to be produced whether it be in hard or softwoods, veneered or painted panels. "Our capabilities cover anyone who needs a bespoke piece of joinery. We have even reproduced existing windows or doors for an exact match or if a client likes the design of something, whether it's a live edged shelf or table, a door or window, we can usually match it for them," said Dee.

For over 30-years Bluerun has consistently grown as a business, and one particular moment that was pivotal in the company's life came in 2020. "Our company logo and corporate image was only created in 2020, and we feel this has brought us a little more up to date as we now have a recognisable branding that people can associate with a professional company. Similarly,



Waterjet cutting design and fabrication with both style and substance



In this issue of Building and Construction Review, we have chosen to recommend Southside Waterjet Limited for its amazing bespoke Waterjet cutting facilities, perfect for both residential and commercial projects.

Southside Waterjet Ltd is a fabrication company that trades in new perspectives, a place dedicated to providing an innovative service a cut above the rest. Waterjet cutting is at the leading edge of material CAD technology, offering unparalleled precision with endless creative possibilities. Its service lends itself to decisive and visionary clients who are ready to cut through in their industry.



Founded in 2012, and situated on the south side of the River Thames, Southside Waterjet is a family-friendly run fabrication company dedicated to an innovative approach. The company believes in exceptional design and attention to detail, and as well as waterjet cutting, Southside Waterjet Ltd also specialises in architectural solutions, visual design, CAD (computer-aided design) drawing and proline templating.

Southside Waterjet has a proud reputation firmly built on quality, reliability and with a completely fresh approach to the trade, the company has become a leading name in its industry favoured by architects, interior designers, contractors and customers across the UK. It is made up of a small but dedicated team of professionals who have decades of experience in custom fabrication techniques that ensure that quality is never compromised.

Waterjet cutting has many advantages, in that it can be faster, cheaper and more precise than other cutting techniques, including laser cutting, for a wide variety of materials. It also boasts unparalleled accuracy, up to 0.01mm, and can cut up to 12" of most materials, including stone, ceramics, metal, glass, wood,

composites, and rubber.

Southside Waterjet Managing Director Peter Noyce explained, "our work all starts with ordinary tap water, filtered and pressurised in an Ultra High-Pressure pump, then delivered via high-pressure tubes to the water jet cutting head. A small diameter orifice will concentrate the water beam and the pressure turns into velocity. The supersonic water beam cuts all kinds of soft material like plastic, foam, rubber and wood. This process is called Pure Water Jet cutting. To increase the cutting power, grains of an abrasive are added to the stream and the water beam turns into high-speed liquid sandpaper cutting all kinds of hard materials like stone, glass, metal and composites. This process is called Abrasive Water Jet cutting."



The company uses a pair of Waterjet Sweden's NC30 machines and two HP pumps, meaning that it has full production capacity or the flexibility to keep one table for more bespoke applications. All work is undertaken at Southside's own on-site fabrication facilities, meaning that projects can be completed usually in 7-10 days. Peter further commented, "Our service lends itself to decisive and visionary clients who are ready to really cut through in their industry, and we undertake both Residential and Commercial projects." Regarding Residential projects, Southside Waterjet has the capabilities to fabricate everything required to bring a dream home to life. Customised flooring and wall coverings, luxurious worktops and splash backs, bathrooms, wet rooms and vanities, bespoke furniture and artwork, outdoor kitchens and much more.

The other side of the company work is that of Commercial projects, and Southside successfully wins contracts with large numbers of contractors, architects, designers and stone and tile distributors. It fabricates



materials to their exacting requirements creating architectural solutions, bespoke and customised wall, floor and staircase designs, furniture trends and swimming pool solutions. It also produces branding, signage and fit-out solutions for the retail, leisure and hospitality sectors.

A recent Commercial project undertaken was to play a role in the refurbishment of the Members' Brasserie at The All England Lawn Tennis Club in Wimbledon. Southside Waterjet fabricated the new decorative marble flooring and staircases to give the space a high-end finish and create a sense of occasion, befitting the renowned Club. Peter concluded, "We understand that sometimes customers may require a bespoke design and fabrication service. No matter what form these design ideas are in, we are constantly experimenting with new ways to inspire customers to take a second look." These new ways include the aforementioned CAD rendering and technical drawings, digital templating and digital slab creation – Southside's skilled team can seamlessly transform any ideas into a one of a kind project.

For more information:
T 020 3221 2133
www.southsidewaterjet.com



High performance compact stump grinders

Predator are industry leading suppliers of high performance, narrow access tree stump grinders, and the company supplies cutting edge tree stump removal tools for Arboricultural professionals, Plant Hire firms, Local authorities and Contractors worldwide.

The company was established in the UK around 15 years ago. The founder was a landscape professional himself, who saw a need in the industry for compact tree stump grinders that could get into tough access areas, like back gardens.

Founded by Arboricultural professionals for Arboricultural professionals, Predator is a leading UK supplier of narrow access tree stump machinery. The company supplies stump grinders from portable, wheeled and tracked, which are designed to be narrow enough to get into the aforementioned tough access sites, by fitting down alleyways and through garden gates to reach tree stumps for removal. This perfectly suits the narrow access conditions of the UK.

Based in Henley on Thames, Oxfordshire, Predator supplies machinery direct in the south of the country, while a network of dealers supply regions nationwide. Decades of shared experience in the field has given the Predator team a unique insight into the needs of a rapidly changing industry. The company has developed an enviable reputation for being innovators at the top of its game, supplying solid, high-performance machinery with a back-up service that is second to none.



Predator's largest customer demographic is tree surgeons and landscape professionals, as often stump removal is an extra service which they will offer their clients. When they fell a tree, quite often the



stump is left in the ground, however if the customer wants to build on the site or wants to get rid of it for aesthetic reasons, they may ask for it to be removed.

If the tree surgeon does not have a stump grinder, they will either have to subcontract the work or hire a machine to do it themselves. As stump grinders are niche machinery, not all hire companies will have one that is suitable for the site. Predator stump grinders make customers' lives easier and their businesses more profitable, and no other company supplies such a comprehensive range of compact kit.

Predator is the only company that supplies a full range of stump grinders focused specifically on narrow access and low fatigue. Traditionally, many stump grinders are supplied to countries where access to the tree stump can be fairly straightforward, meaning that there is little need to have machinery that is narrow and compact. However because access in the UK is often very different, operators would have to use smaller stump grinders to get into a site. This meant less power, and much more fatigue to the operator to complete the job, and so compact machinery was much needed.

Predator's tracked machines are the narrowest on the market for



stump grinder for both domestic and commercial work.

The company's most powerful tracked machine, the Predator 56RX, is 56 horsepower and yet only 31 inches in width, and it is available with radio control, dozer blade and tow bar as standard. Both the machines mentioned have the power of commercial stump grinders, yet are designed to be compact enough to fit through garden gates and alleyways.

In the past Predator sold direct to all parts of the UK, but over the last few years there has been a steady development of new Predator dealers and service centres that supply nationwide, including internationally. This makes it easier and more convenient for customers to be able to demonstrate, service and purchase predator stump grinders closer to home.



As the company looks towards the future, Predator realises that the increase in UK domestic housing developments bring with it a focus on space efficiency, smaller entrance points, and smaller gardens, and this means that access for stump removal operators is becoming more challenging. The company is looking at ways in which the machinery can be more compact, fuel efficient, versatile and high performance.

From portable to tracked, Predator have the perfect machine to kickstart your stump grinding business.

For more information:

T 01189 404 739
info@predator-mfg.com
www.predator-mfg.com



their capability, and are built to be one machine for almost any job. For example, as well as being radio controlled, and having 38 horsepower, the Predator 38RX has variable tracks that reduce to 26 inches in width, which is the same if not narrower than some smaller 2 wheeled stump grinders. This means that the operator can do a huge variety of stump removal jobs without having to buy or hire multiple stump grinders to suit the site.

This Predator 38RX has also recently been upgraded to include a rear dozer blade, which is a very useful feature that customers have been asking for. This allows the operator to scrape and level grinding mulch without having to manually do it themselves, making it the ultimate compact



ModCon Cabins offers new buy, sell and auction related website for the portable building and plant industry



ModCon Cabins is a manufacturer and supplier of modular and portable modular buildings, site cabins, storage containers, chemstores and site ancillaries such as staircases, effluent tanks and smoking shelters. Since its establishment in 2017, ModCon Cabins has been the specialist choice for a number of industry sectors including construction, retail, healthcare, leisure and sports facilities.

With a strong focus on industry knowledge and expertise, the people within the framework of the business have a combined cabin and container history of over 50 years. From all aspects of industry skills such as designing and manufacturing cabins and containers over the years, ModCon Cabins is able to give a measured understanding to what each client can expect when it comes to quality, service and value for money. "We deliver a truly personalised service to each individual client, ensuring their requirements are listened to and met. We are honest in our work, and when we say we are going to do something we deliver on that promise. Clients can be reassured we are loyal to the end, and this is why many clients stay with us for a long time. We also offer our services at a reduced cost, compared to other services on the market," stated Alan Willetts, Business Owner.



Based in Gloucestershire, ModCon Cabins has customers all over the country from many professions including hire fleet companies, house builders, plant companies, and event management. The company offers a range of modular buildings and shipping container conversions including offices, canteens, drying rooms, changing rooms, welfare units, shower and toilet blocks, temporary and residential housing.

Bespoke manufacturing is an area to which the company hugely excels within, boasting a large portfolio of products that are available in a wide range of sizes and configurations. It prides itself on truly listening to what the client wants and then designing and building to that exact requirement. A prime example of its bespoke capabilities and how they can be flexible to suit requirements is the purchase decision offered for a robust anti-vandal cabin. Manufactured from steel, clients then have a choice of two external finishes, either corrugated profiled sidewalls or flat-sided panels. The standard windows are fitted with steel shutters and the steel doors have a high-security multi-point locking system as standard. Clients can require extras such as fork tunnels and low-level lifting lugs if needed, and an internal fit out can come as standard or made to an agreed specification or design. As standard, the anti-vandal storage containers have steel double doors with secure locking mechanisms and solid timber floors, however, clients can also choose optional add-ons such as racking, electrics and insulated walls.

Furthermore, clients have the option to purchase purpose-built storage containers that come in a range of sizes starting from 7ft x 5ft to 40ft x 10ft. Alternatively, if you're looking for ancillary items to complete an outstanding building or project, ModCon Cabins has a large range to choose from including steel staircases, galvanised staircases, toilet unit steps, effluent tanks, boot washes, water bowser pods, external triple stack staircase pods for containex units, and containex unit type effluent tanks.



Looking ahead, Alan explained some upcoming developments for the company, "We are currently in the middle of producing the prototype for On-Site Diesel Vaults which will be the latest addition to our product range. We are also soon to open a new yard that will offer cabin refurbishment and second-hand cabins for our customers."

Alongside manufacturing and supply services, Alan has also set up a sister company called ModCon Cabin Trader which is a complete modular, portable building and plant industry related resale auction website. ModCon Cabin Trader is an alternative resale/auction bidding website offering all members the opportunity to buy and sell or auction their items from a complete industry-based website in a trustworthy environment. Combining the company's long and successful history within the portable and modular building industry and the associated trade, with Alan's own personal vision, ModCon Cabin Trader was established with the aim to be a website that everyone associated within their industry could become a member of to buy, auction and sell their cabin, container and plant assets (old or new) from an easy to navigate online database. Offering members a complete service that promotes a circular economy, members will also benefit from the elimination of the pricey after-sale final commission fees. Members can buy, sell and auction similar products of which are sold by ModCon Cabin's itself to a vast number of professionals involved within the same industry as themselves. Place a bid, buy now, set a reserve price, leave feedback for all transactions, upload your own pictures and write your own sales descriptions. Customers are invited to register today and become a member.

For more information, please see below:
T 0333 404 8822
M 07842 318869
alan@modconcabintrader.co.uk
www.modconcabins.co.uk
www.modconcabintrader.com



Your trusted partner for site health and safety

RG Wilbrey (Consultants) Ltd has provided Training, CDM Technical advice, Site Inspections/Auditing, and Accident Investigation support to clients in the construction industry for almost 60 years. Established in 1964 by Roy Wilbrey, the company is considered one of the longest-standing independent health and safety consultancies in the United Kingdom. With its headquarters in Wolverhampton, West Midlands, RG Wilbrey is centrally located and has advisors throughout the UK, all suitably qualified to provide quality Health and Safety Services.

RG Wilbrey has a range of clients, from SMEs to FTSE 100 companies. These clients consist of contractors, housebuilders, and groundworkers, alongside utilities, specialist trades and many other business sectors. "RG Wilbrey is an approved training provider. The company offers a range of health and safety, first aid, mental health and site-based



training courses to organisations of all sizes and individuals throughout the UK. These courses can take place in our purpose-built Training Centre in Wolverhampton or at a venue close to you." Beth, a Sales & Marketing Administrator for the company, informs us.

RG Wilbrey has almost 60 years of experience supporting its clients with health and safety requirements. The in-house team of experts are on hand to provide comprehensive and professional advice and guidance. Their courses have been developed to meet all the challenges of today's construction industry. "We have accreditations with CITB, NEBOSH, Highfield Qualifications, IOSH, MHFA England, Quallsafe and UKATA," mentioned Beth.

There are three courses worth noting. Their One-Day Emergency First Aid at Work course, Three-Day Emergency First Aid at Work course, and they proudly offer Adult Mental Health First Aid 2022.



The Emergency First Aid at Work course will provide participants with the knowledge and confidence to administer First Aid. The course is designed for anyone looking to be a qualified Emergency First Aider and is aimed at low-risk sectors such as offices or shops and will help to bring you and your staff to the level recommended by the HSE. Upon completing this course, you will have the knowledge, ability, and confidence to administer First Aid.



The Three-Day First Aid at Work Course will provide a higher level of training to ensure you, or your staff can administer First Aid for a wider range of conditions. This course is suitable for individuals in any sector, despite primarily targeting businesses with exposure to hazards, such as working in construction, manufacturing, and chemical plants. The course covers content such as poisons, burns and scalds, airway and breathing problems, casualty assessment, trauma, catastrophic bleeds and the safe use of tourniquets and other serious conditions. The Three-Day course comes highly recommended.

The Two-Day Adult Mental Health First Aid Course is internationally recognised. It teaches people how to spot the signs and symptoms of mental ill health and how to provide help on a first aid basis. Every MHFA England course is delivered by a quality-assured instructor member who has attended the Instructor Training programme accredited by the Royal Society for Public Health.

Having existed for many years, the most vital part



of this company's success is its values, which remain the core of everything it does. To care for the welfare and development of its employees, and to value its clients and their needs. Employees in great companies trust the people they work for, and trust is an integral part of continued success. With the rise in concern about employee mental health in the workplace, RG Wilbrey has gone above and beyond to care for its employees. "Almost all of our own workforce has undertaken Mental Health First Aid Training delivered by our own MHFA England qualified trainer. Although this training is not compulsory within our company, we encourage everyone to do this as mental health does not just affect work issues. It is more far-reaching than this. Mental health and well-being affect all sectors of the workplace. Our qualified trainers are developing further courses to help support the mental health of your employees," Beth stated.

Beth continued to explain the uniqueness of the RG Wilbrey's services. "Our advisors are not hazard-spotters but are highly trained and experienced construction specialist health and safety professionals. They can give very effective guidance and support to site management teams and those at the board level. Our reputation is built upon our ability to provide sound health and safety advice whilst adopting a common-sense approach. Although our team of advisors have a wealth of knowledge in various industry sectors, our principles are about building relationships, respect, honesty, and integrity. We are proud to help individuals and organisations improve their understanding of health and safety in the workplace with excellent feedback

paying a testament to this. Our experienced and knowledgeable trainers aspire to provide training that meets all learning objectives and will aim to surpass these objectives and be an enjoyable and positive experience simultaneously." When asked about how the company feels moving forward, Beth said, "As we move into our 59th year, we are excited to continue supporting our clients with site services, technical support and training provisions, in addition to expanding our diverse client base."

If you would like to speak with the company for either more information or for the costs of services, see contact details below:
T 01902 420920
info@rgwilbrey.uk.com
<https://www.rgwilbrey.uk.com>

RG Wilbrey will also be at The Health and Safety Event at Birmingham, NEC, in April 2023, stand 3/K24 if you would like to speak to them face to face.



ADVECO – Building sustainability into commercial hot water

For more than fifty years, Advenco has been a leading innovator providing hot water (DHW) for commercial-scale projects across the UK. Today its focus is shifting to encompass a blend of traditional and new, more sustainable technologies in the form of solar thermal for those on gas and especially heat pumps for new builds to integrate greater sustainability into DHW systems.

With a predicted one-third rise in non-domestic floor space by 2050, much of the current focus resides on new builds, but this still leaves more than 1.6 million pre-existing non-domestic buildings in England and Wales, generating almost one-fifth of the UK's carbon emissions, needing expert, practical support.

Air source heat pumps (ASHP) have become the poster child technology for the government's net zero strategy. The advantage of ASHPs is that, with performance greater than 100%, they can extract additional energy from outside of the building's metered systems delivering significant carbon savings. For a commercial DHW system, it is recommended that a working water temperature from the ASHP, such as Advenco's FPI32 or L70, must be at least 45°C, preferably 55°C. This is certainly attainable from current generation of Advenco's ASHPs. When deployed in a hybrid approach, ASHP is used to preheat and combines it with either gas-fired or more preferably an electric top-up to achieve the required hot water temperature. This is where the additional system complexity and cost can creep in. But by correctly balancing a system through a mix of physical spacing in the vessel and system monitoring with dedicated controls, as developed for the Advenco FUSION, the system no longer fights itself, working seamlessly to deliver the highest operational efficiencies.

In line with the European Commission's proposal for a tightening of F-Gas regulations, development work continues at pace to support the introduction of R290, or propane as it is more commonly known. This refrigerant offers a coefficient of performance (COP) that enables working flow temperatures from an ASHP of up to 75°C and potentially much higher. This means future commercial systems can be less complex, without the need for additional electric immersion for high-temperature flushing for legionella protection. That said, immersions remain perfectly suitable for low-demand backup applications in boiler-fed indirect cylinders, ensuring business-critical DHW demands are met.

What we have seen more recently though is a shift in use, where immersions are used 'directly' in high-demand commercial applications as the primary heat source. An electric immersion heater has a high heat intensity compared to gas or indirect and, when coupled with high operating temperatures and hard water will increase the rate of scale formation which, over time, will cause the element to rupture.

In response, protecting a system from limescale is often only addressed by a vigorous cleaning regime. This method has a cost and downtime associated with it that is not acceptable for many commercial buildings. For this reason, minimisation of



scale formation with a water softener or a scale inhibitor may be adopted, but for many sites neither provides a satisfactory response because of space, maintenance, downtime, or cost. A better option for these sites would be to replace the immersion heaters with a low scale forming hot water system.

The new Advenco ARDENT electric boiler range provides a proven and cost-effective answer.

The boiler still utilises immersion heaters located in a small tank heat exchanger within the boiler housing. This electric boiler supplies a sealed 'primary' loop to an indirect coil in the cylinder. The electric boiler heats the same water continuously so there is only a finite amount of scale in the system which will not damage the elements. The heat exchanger in the cylinder is a large coil operating at relatively low temperatures. Advenco's extensive experience with indirect coil use in the UK has shown that scale is not a significant problem in

these systems. The electric boiler operates at the same efficiency as an electric immersion heater (100%) so the only overall difference in system efficiency is the minimal pump electrical consumption and a small amount of heat loss in the pipework.

An electric boiler hot water system will take up a little more space than an all-in-one electric cylinder, but it has more versatility and requires less clearance for the cylinder. Similarly priced to an immersion heater, an electric boiler-based system will cost slightly more due to the small amount of additional installation work. But with virtually no maintenance and the cylinder forming significantly less scale, vastly improving reliability, the operational and maintenance

savings will offset these additional capital costs. The electric boiler additionally offers a level of redundancy that is not achieved with a single immersion heater.

As the limitation on new gas grid connections for heating systems becomes effective, it will become critical for system longevity to recognise the new challenges electric-only presents over more familiar gas-based applications.

But if a business already uses gas, the application of solar thermal with Advenco's built-in drainback functionality, can really improve the sustainability of a building's DHW system. When used as a preheat with the coldest water possible to



maximise the efficiency and output, solar thermal remains the best option, maximising free heat with no additional carbon emissions. This is an important consideration given buildings with an existing connection can still upgrade to new gas appliances until 2035, with 100% hydrogen-ready options extending that window well into the 2040s based on current appliance lifespan.

Advenco continues to support the refurbishment of existing buildings, recently extending its ranges of direct-fired condensing water heaters – the AD and the ADplus. Both ranges provide a compact, floor-standing design, with AD offering additional wall-mounted options that are easy to introduce into an existing plant room to provide high-demand semi-instantaneous and instantaneous hot water applications. Improved combustion efficiency means the burner requires less gas, delivering up to 30%

savings in fuel consumption, making it more cost-effective, while reducing emissions. For smaller on-demand needs, ADplus heats only what is necessary, with no ignition for smaller withdrawals providing considerable additional energy savings. Both AD and ADplus as a result exhibit ultra-low NOX (Class 6 appliance at 27 mg/kWh) and CO emissions (19ppm). With the government already committed to enabling the blending of hydrogen in the gas grid it is also worth noting that these latest generation direct-fired condensing water heaters will already support the initial 20% hydrogen/natural gas blend.

Together, these technologies offer actual development arcs right now for existing commercial properties that are currently on-gas, or new builds seeking to embrace low or no emission choices to deliver more sustainable operations that will help achieve net zero by 2050.

For more information, see below: www.advenco.co



Floor sealer & finish guide

Beautiful floors aren't born – they're built. When it comes to designing and building floors that customers love, flooring professionals understand the relationship between the layers of a floor and how to bring out the best in a floor with the proper tools and coatings.

Whether your customers want a traditional look or a completely customised creation, choosing the right coatings can help create a stunning floor. Here are some things to remember when using finishes.



Floor finishes

The importance of a floor's finish is, of course, the protective surface layer that is the first line of defence against floor damage. When it comes to a floor's finish, professional installers have a wide range of finishes to choose from:

- ▲ Oil-based/oil-modified poly
- ▲ Waterborne poly
- ▲ Moisture cured urethanes
- ▲ Acid cured urethanes (AKA Swedish Finish)
- ▲ Waxes and Oils

When it comes to helping customers choose the right kind of floor finish, make sure the following concerns are addressed to give clients a wide range of options:

- ▲ Durability (abrasion/scratch resistance)
- ▲ Look and style (colour, sheen level)
- ▲ Potential colour changes over time
- ▲ VOCs/green options
- ▲ Maintenance
- ▲ Dry/cure time

Fixing floor finish mistakes

Proper care and preparation are needed for applying floor finish. Floors need to be properly sanded, cleaned or repaired before any finish is applied. Here's a list of common floor finish mistakes & ways to prevent them:

Streaks – Ensure job site conditions are properly prepared for optimal drying. Most streaking problems can be traced back to the application or even the applicator itself. An easy way to eliminate problems with streaking is with the use of a roller.

Side bonding – Using a quality floor sealer will help prevent side bonding.

Peeling – Check to make sure the coatings you use are compatible with each other. Following

manufacturer's instructions will help give proper guidance on what abrasives are recommended when prepping the floor.

Blistering – Temperature control is often the cause of blistering. When finishing a floor, consider the sun and either cover the windows with plastic or plan the job early in the morning or late in the day. Make sure that the room is properly prepped to allow for proper airflow as the finish dries.

Uneven sheen – Make sure the floor finish is prepared according to manufacturer's instructions. Ensure that the finish is mixed well. If multiple containers of finish are

needed to complete a single application, batch them together to ensure a uniform sheen.

To give your customers the best-looking floors with superior protection, Bona Mega ONE and Bona Traffic HD have been designed specifically for the needs of professional floor contractors.

Contact
T 01908 525150
info.uk@bona.com
www.bona.com



RETHINK RESILIENT FLOOR REPLACEMENT

Bona Resilient Solution

RENEWING WORN HEALTHCARE FLOORS

Is it possible to achieve hygienic and safe floors without having to replace the old one? Yes, with the innovative Bona Resilient Solution, there is a complete, long lasting, effective system to restore, renew and upgrade resilient floors. The process could be repeated over and over again – throughout the floor's lifetime.

92% LESS CARBON EMISSIONS
41% COST SAVINGS
90% ENERGY SAVINGS



IMPROVED HYGIENE FOR HEALTHIER SURFACES

Bona's unique process along with our coatings creates a monolithic surface that seals against microorganisms thus resulting in a floor with the highest level of hygiene standards as mandated by The Technical Rules of Biological Agents (TRBA).



DESIGN CUSTOMIZATION

The Bona Resilient Solution offers numerous design options from changing the colour and design of a floor, to adding decals, graphics and logos. The possibilities are endless.



RETHINK
RENEW
UPGRADE

RESILIENT FLOORING SOLUTION
WEAR-THRU WARRANTY
 Bona.com/warranty

WE CALL IT BONA RESILIENT SOLUTIONS, YOU COULD CALL IT A BRAND-NEW FLOOR.
 Request your free floor evaluation here!

Bona Limited: 01908 525150 | info.uk@bona.com | www.bona.com

Bona®

Andhouse C&P

▲ 0207 378 1131
 ▲ info@andhouse.co.uk
 ▲ www.andhousecompanies.co.uk

- ▲ Solid and glass partitions
- ▲ Timber and glass Doors
- ▲ Ceilings and specialist ceilings
- ▲ Third party certified installation of Fire doors
- ▲ Third party certified maintenance packages

RENOVATE NOT REPLACE

Bona Primers and Lacquers

- ✓ CLIMATE & ENERGY SAVINGS
- ✓ COST SAVINGS
- ✓ DESIGN POSSIBILITIES

Bona

Constructionline
 claim
 SafeContractor
 CHAS
 SSIP
 SafeContractor
 SafeContractor
 Fire Door Maintenance
 Fire Door Installation
 UKAS
 UKAS

The Garden Room, Middle Temple

Situated in the heart of London is the beautiful Middle Temple Garden Room bar and restaurant. Part of a modern institution with a long and distinguished history, Middle Temple is one of the four Inns of Court which houses chambers from which barristers practise.

The Garden Room within the estate has recently been constructed to offer a beautiful place to work and socialise, along with indoor and outdoor areas to

relax and enjoy the garden views.

Flowing beautifully across the seating areas and throughout the bar and restaurant, Havwoods' stunning Fendi Flooring in a striking herringbone finish has been used to create a light and airy feel.

Part of the Venture Plank range, this board is perfectly suited to more commercial spaces thanks to its high-

quality and robust design. Its oiled finish ensures that it offers exceptional durability whilst maintaining a truly natural appearance.

The overall interior is further characterised by neutral colour schemes and modern furnishings - leaving a beautifully welcoming and on-trend space for everyone to enjoy.

www.havwoods.com/uk



Product: HW3001 Fendi Prime

Luxury wood flooring and cladding

H | HAVWOODS INTERNATIONAL

Info@havwoods.com | +44 (0) 01524 737000 | www.havwoods.com/uk

Havwoods showroom experience in 5 UK locations: Guildford Surrey, London Chelsea, London Clerkenwell, Knutsford Cheshire & Carnforth Lancashire

Product: HW1812 Aspen Raw

Reflect your lifestyle with bespoke sliding doors

Transform your space with bespoke door fronts from Mirror Door Systems Ltd. Established in 1994, the company is known for its quality, workmanship and efficient delivery.

We like to work closely with our customers to explore their ideas and come up with a bespoke solution just for them. They can come to the showroom to get ideas for what they want or come to us with a fully formed idea. We can normally accommodate every customer's preference, whether they want something in a different colour, material or size. The door fronts are ideal for a wide range of things, such as walk in wardrobes, room dividers or offices - sliding doors are great for maximising smaller spaces.

Mirror Door Systems Ltd is a leading UK provider of made to measure sliding doors. Its full product range includes six different sliding door systems with over 30 different colours. All the systems also incorporate anti-jump safety features & have been designed to accept the choice of safety back mirror, opaque glass and/or panels. They are available in bulk form, door kits or made to measure.

Interested to find out more? Head to the website or get in touch.

T +44 (0)1268 573357
www.mirrordoor.co.uk

BESPOKE HAND FINISHED OAK
FRAMED HOUSES & EXTENSIONS
GARAGES • SUN ROOMS
PORCHES • ROOF TRUSSES
POOL BUILDINGS • CLADDING
BEAM COVERS

PURE QUALITY,
BEAUTIFULLY FINISHED

OAKMASTERS
oakmasters.co.uk
01444 455 455



Welcome back Matt



GEZE UK is delighted to welcome back Matt Gregory as Specification Manager for the north.

Matt will be responsible for assisting architects and specifiers with compliant solutions for all products in the GEZE range which includes automatic doors, window technology and manual overhead door controls.

In addition, he will produce detailed and risk assessed NBS specifications which are supported with BIM objects and present GEZE's RIBA approved CPD to help architects and specifiers expand their knowledge.

Matt first joined GEZE in 2017 and after a spell outside the industry he returns to the company bringing with him extensive knowledge of entrance systems and automatic doors from his time as Automatic and Industrial door engineer and previous sales management experience.

Matt said, "I am pleased to be back working with GEZE and their respected and varied product range, they have a strong brand and excellent reputation in the door industry. I look forward to working closely with architects and specifiers, creating strong collaborations with them and providing a quality service."

Richard Richardson-Derry, National Specification Manager added, "It's great to be working with Matt again, he brings enthusiasm and extensive experience to the team. He will be an important part of the company's continued growth."

For more information about GEZE UK's comprehensive range of automatic and manual door and window control products, visit: www.geze.co.uk

Zoo Architectural Hardware

Zoo Hardware are designers and suppliers of architectural door hardware including door handles, knobs, locks, cylinders, door closers, hinges and more. All of their products are produced to the highest quality in aluminium, brass, steel and zinc. Every item they produce is selected for its quality and value for money and they never compromise quality for cheaper prices. Zoo Hardware are confident in their belief that they can offer some of the highest quality products at the most competitive prices on the market.

Their in-house design team is fully qualified in all aspects of design and production and they constantly aim to supply innovative, stylish and cost-effective hardware solutions settling for nothing less than top quality. Design facilities at their head office means they can create, manufacture and deliver state-of-the-art products to stay in-tune with current design trends and ahead of the competition.

The Zoo Hardware product ranges cover all aspects of architectural ironmongery, including: Vier – a precision design range of levers, hinges, door closers, DIN locks and cylinders created for the exacting needs of Architects, Specifiers and Contractors; Fulton & Bray – traditional and classic brass door hardware and accessories ideal for period and contemporary properties; Rosso Tecnica – a new European inspired range of designer levers and accessories made from SS304 and finished in a selection of new hard-wearing finishes; and Foxcote Foundries – a wide range of traditional black antique door furniture and window fittings.

View their full range of products at: www.zoohardware.co.uk or call one of their friendly sales team on: +44 (0)1228 672900 to discuss your requirements or to request a catalogue.



onetile.co.uk
Italian porcelain stoneware and ceramic tiles

CREATING BEAUTIFUL SPACES

© Copyright 2019 by Ceramiche Atlas Concorde S.p.A.

THE BEST ITALIAN TILE BRANDS - THE BEST PRICE

- Indoor & outdoor collections
- Professional, expert advice
- Exclusive offers available
- Large distribution capacity
- **DISCOUNTS** for Architects and Contractors

For more information:
T: 0800 061 4809
E: sales@onetile.org

PLEASE QUOTE CODE:
OTBPApril22

STANZA
ARCHITECTURAL HARDWARE

Our STANZA range is designed to be both elegant and modern with the affordability to suit both consumer and contractor.

Popular with homeowners, architects and house builders throughout the UK, our Stanza ZPZ range consists of 17 classic and contemporary designer levers built on a zinc die-cast inner rose with a 50mm diameter screw on rose cover. The addition of four new amazing finishes: Oscura Matt Black, Fiyvo Satin Brass, Tuscan Rojo Gold and Esna Bronze, and a new square rose option, now allow the customisation for a wide variety of modern interior design projects.

T: +44 (0)1228 672900
E: sales@zoo-hardware.co.uk
W: www.zoohardware.co.uk

For further information on this range visit our website or call one of our friendly sales team.

STANZA is a brand of Zoo Hardware

PBP
Innovations

The advertisement displays several plumbing products: a curved metal handle, a black plastic component, a toilet with a blue hose, a hand holding a blue tool, and a blue plastic component.

First class cleaning and waste management

Eventclean specialises in event cleaning and waste management. With over 25 years' experience, it has catered to some of the most high profile events in the country including the Rugby World Cup Fanzone in 2015, the UEFA Champions League Final in 2017 and the Volvo Ocean Race in 2018. It has also introduced waste sorting and recycling services to the National Eisteddfod in Cardiff Bay in 2018 and has been cleaning contractor for the RHS Flower Show for many years.

cleaning and waste management or quality toilet hire, you can rely on the team for the highest standards. Services include event cleaning and litter picking, waste management and disposal, waste recycling, portable toilet cleaning and attending, and the supply of compostable food packaging and cleaning products.

Contact
T 01443 844492
info@eventclean.co.uk
www.eventclean.co.uk

Whether you are looking for first class



Heart Pods

Heart Pods based in Coventry design and build a wide range of Pods, Shepherd Huts, Garden Studios and other additional outside spaces.

Most recently, they launched their latest range in Garden Studios. These high-quality flexible spaces can be installed and ready to use very quickly.



Available in three sizes and specifications, they are built in a contemporary design with floor to ceiling windows and doors and are fully lined and insulated.

Whether you need office space, a gym, playroom, bar, man cave or somewhere to escape and relax, the Garden Studios are a great alternative to an extension and at just under 2.5m high, in most cases, no need to apply for planning permission.

The Garden Studios are a great addition to the fantastic Pods and Shepherd Huts already on offer at Heart Pods. You can see the entire range on their brand new website at: www.heartpods.uk

To arrange a virtual show-round, call 01676 540333 or email: info@heartpods.uk

First Class Cleaning for Your Event

Site Cleaning | Recycling
 Toilet Hire & Servicing
 Compostable Food Packaging

01443 844492
 07841 120411
info@eventclean.co.uk
www.eventclean.co.uk

TIMBER GARDEN BUILDINGS

'Quality Timber Buildings For All Your Needs'

Warwick Buildings
 Nightingale Lane
 Southam Road
 Long Itchington
 Warwickshire
 CV47 9AT

01926 815757 | www.warwickbuildings.co.uk

The 5th room



As outdoor living trends grow, the garden is swiftly becoming "the 5th room" where homeowners can relax, connect with nature, and focus on well-being. You need to get the details just right for the perfect outdoor living space: complementary colours, a smooth finish and quality materials.

Since its launch in 2010, EASYJoint from Azpects has been a market-leading jointing compound loved by landscape professionals and the DIY sector alike. The all-weather, sweep-in jointing compound is a quick, effective, and attractive way to fill joints between paving.

As paving trends develop, products need to evolve with them. EASYJoint has done precisely that with the new EASYJoint Select range of solid colours, featuring Tungsten, Carbon, Bronze, and Jet Black. The solid colours provide a more uniform, modern finish compared to the natural colours of the original EASYJoint range. EASYJoint Select is suitable for porcelain or natural stone paving and retains the sweep-in application method that made EASYJoint so popular.

Associate Director Jeff Carter comments, "Azpects are excited to see our EASYJoint range continue to grow, with eight products now in the family. We pride ourselves on keeping up with the latest trends in the marketplace and do not doubt that this bespoke range of colours will satisfy our users' needs."

To find out more about the EASYJoint range, visit www.azpects.co.uk

Don't Just Joint It, EASYJoint It!

Eco Clipper FM4 Sport for sporting grounds



Eco Clipper, known for electric mowers for the turf industry, has introduced a special version for the maintenance of sports and recreational grounds. The 4.11m wide front mower features four

independent cutting decks. For the FM4 Sport, the side decks can be folded in independently, allowing for narrow passages to be mowed.

The smooth decks with fast rotating small blades ensure a high quality cut and good clippings dispersion. The clippings are also spread well in wet grass. This makes it possible to schedule this mower almost independently of the weather.

The Eco Clipper mowers are further distinguished by the high possible mowing speed. This means that on average a sports field can be mowed in less than fifteen minutes with an Eco Clipper FM4 Sport.

To operate the mower a 40 HP tractor is already sufficient. The electricity to drive the mower is generated by a PTO driven generator. For larger tractors, the generator can be fitted on the front mower. For smaller tractors and optimized weight balance Eco Clipper offers a separate generator unit for behind the tractor.

Contact

T +31 (0)6 46 75 35 60
info@vanmac.co.uk
info@ecoclipper.com
www.ecoclipper.com



Shou Sugi Ban®: Charred timber cladding



Aesthetically pleasing and low maintenance, Exterior Solutions Ltd offers a premium exterior finish for contemporary builds and heritage renovations. Shou Sugi Ban® is the market leader in quality charred timber cladding.

Inspired by the traditional Japanese art of yakisugi, Exterior Solutions has created a desirable range of colours, grains and textures in the Shou Sugi Ban® collection. Are you drawn to traditional black, crackled timbers or is a light, smooth finish in keeping with your architectural design?

Our expert team handcraft sustainably sourced timbers in our on-site workshop. Our commitment to high standards has earned us a reputation as a trusted supplier to architects and building developers.

Our charred timbers are naturally insulating, as well as being weather and insect resilient. They provide a timeless finish to any property, which won't fade, crack or peel.

Shou Sugi Ban® has been the specification of choice on RIBA award-winning builds, Grand Designs and stunning exterior landscaping projects. Does it fit your design brief?

If, so, download the Shou Sugi Ban® catalogue from our website, or contact Exterior Solutions on 01494 71800 for samples and a quote.

'Dedicated to offer the best mowing system for maintaining large area turfgrass'

Eco Clipper FM4 Sport for sporting grounds
www.ecoclipper.com
ECO CLIPPER®

MINOR TINY HOMES

BURN YOUR SUIT
 FORGET YOUR COMMUTE
 TURN OFF YOUR PHONE
 GO BAREFOOT
 COOK OVER FIRE
 GAZE AT THE STARS
LIVE SMALL.

Design-led tiny homes for dreamers. Built sustainably in our Dorset workshop and delivered anywhere in the UK.

minorhomes.co.uk

MAC Cabins

MAC Cabins Limited is a fast-growing Timber Building company based in Okehampton, Devon, with over 30 years' experience in the construction industry. Proud to be the providers of one of the largest selections of: Timber Buildings, Log Cabins, Leisure/Holiday Cabins & Glamping Pods, in the heart of the South West of England.

To compliment the extensive ranges of timber buildings, MAC Cabins also offers a vast variety of other Timber Frame & Modular Frame options,



providing one of the widest selections of timber building options, within the market-sector.

For all timber frame styles, MAC Cabins works with self-build and custom-build projects, where the initial design has already been completed with architects. We help to guide small to medium-sized developers, on sites of 1-30 plots, to identify the best way to convert vision into reality.

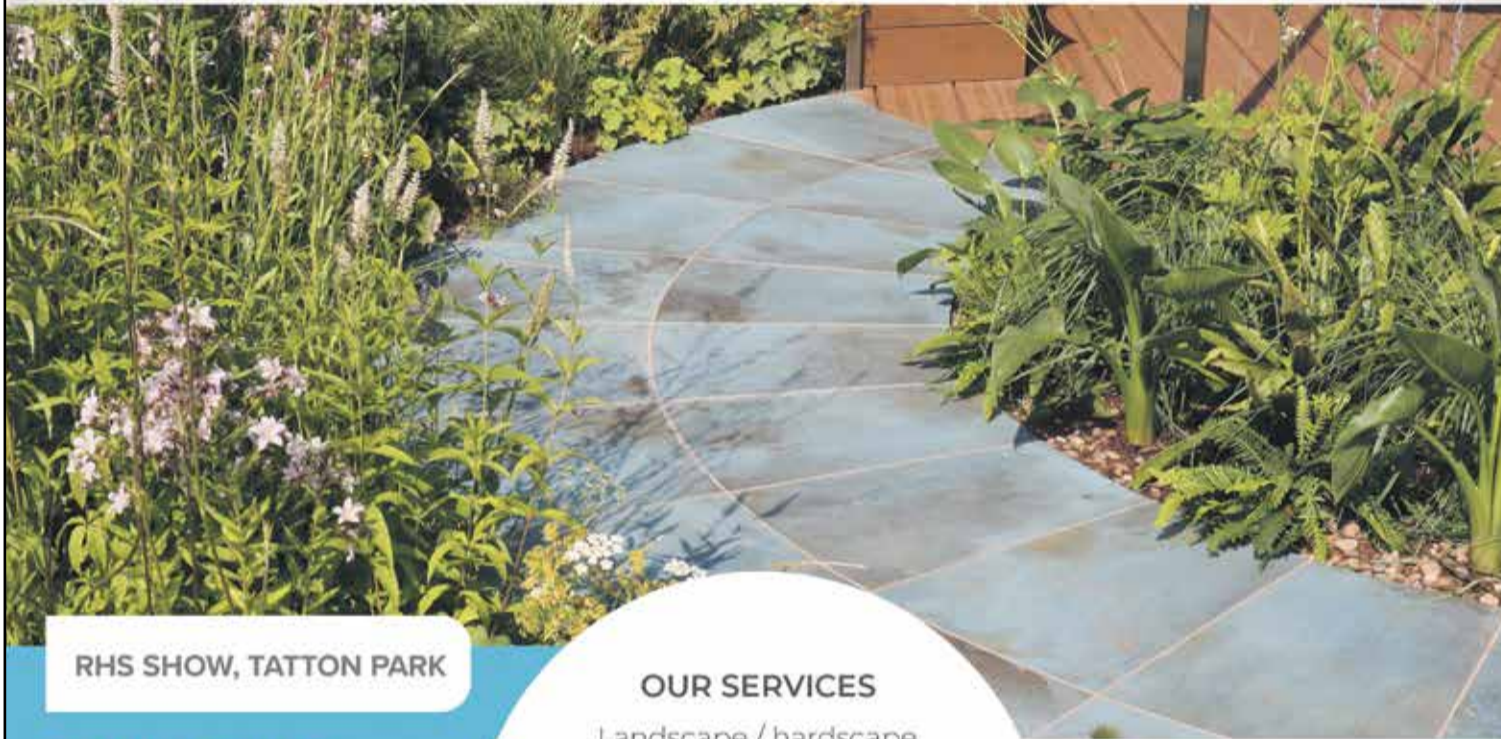
MAC Cabins continues to expand its vast

portfolio of designs and build options, allowing you to select the perfect combination of style, size and price, confident you will find the perfect selection to meet your growing demands.

With every building you will receive a structure that has a higher standard specification than most other comparable products.

T 0800 999 1564
help@maccabins.co.uk
www.maccabins.co.uk

Creators of Functional and Stylish Building Finishes



RHS SHOW, TATTON PARK

TEMPLATING AND WATERJET CUTTING PROJECT

OUR SERVICES

Landscape / hardscape features, swimming pools, templating, brick sets, waterjet cutting, bullnosing, steps & risers, reduced slip features, logos & signs, furniture cladding, etching & painting, mosaics

BRICK SETS PROJECT

PRECAST PANELS, HARLOW



Contact us on 01565 750666 to discuss your next project



01565 750666 | sales@aquacut.co.uk | www.aquacut.co.uk



Looking for quality landscape & building materials from a trusted supplier?



Established in 1998, Stone Zone and Landscaping Centre are a nationwide trade supplier, offering quality landscaping and building materials at trade prices.

Recently being awarded with the Gold Trusted Service Award for 2022, this family-run business offers a 10% discount to Trade card holders and fast delivery.

The Stone Zone has supplied materials to National Trust Parks, Caravan Parks, Housing Developments, Golf Courses, The Tower of London and many more affluent settings!

Now proudly supplying a 'Developers' range, the Stone Zone offer stunning porcelain paving products designed for newly-built homes, at affordable prices.

Are you a Greensman or Greenkeeper? Their Wessex range consists of Bunker Sand, Silica Sand, Dutch Tree Sand and more. They can even make bespoke soil blends tailored to your requirements!

To cater to the environmentally conscious, the Stone Zone have developed their own eco-friendly 'Sustainable range', including FSC Certified Oak Sleepers, Composite Decking and locally blended soils.

Stone Zone pride themselves on being 'a service you can rely on' and are committed to putting their clients at the heart of what they do. With a dedicated account manager, best rates and exceptional customer service are guaranteed.

To find out more, call on 01202 874207 or email: sales@stone-zone.uk

The TP Group: The UK's leading multi-disciplinary contractors

Established in 1986, The TP Group has quickly grown to become one of the UK's leading multi-disciplinary contractors.

Based in Essex and operating across London, the Southeast and the Home Counties, our mission is to provide the highest quality of service possible to our clients, with a consultative approach and our 'can do' attitude.



With over 30 years' experience, our specialist teams will provide you with all the expertise your project needs and, above all, get the job done.

Over the decades, we have expanded our range of specialisms and set up dedicated divisions to reflect our expertise.

Whether you're looking for Painting Solutions, Passive Fire Protection, Surfacing & Coatings, Landscaping, or an integrated mix of services, our professional teams are always on hand to work with you on your projects.

Why choose us?

Our clients know we're not salespeople. We are experienced workers who have all started in junior positions and worked our way up, from the labourers to the

Managing Director. We know the length of time things take, the problems we need to overcome, what's achievable and what's not. And we'll always be honest with you.

The TPG ethos combines a common-sense approach with a 'can-do' attitude. We fully understand our clients' needs and service them in a way that fills them with confidence, often inspiring them to request other services from us.

We will always go the extra mile and, most importantly, get the job done to your complete satisfaction – no exceptions. This is our promise to you: Service Without Compromise.

Contact
T 01277 841415
info@thetpgroup.co.uk
www.thetpgroup.co.uk



Maintenance free solutions for decking and landscaping



Did you know that many real wood decks require full replacement within seven years of installation? This coupled with annual maintenance costs for labour and materials can make your wooden deck very expensive in the long run and if you are doing it yourself it's going to use up a lot of your time. Time that could be spent enjoying your garden instead.

A Gardening Express survey found that homeowners change their patio or deck six times over the course of their gardening lifetime at a cost of around £9,000. Fortunately, if you are installing or replacing your deck there is a solution in the form of recycled plastic decking. A long-lasting alternative to wood.

Utilising plastic that would ordinarily be sent to landfill or incinerators, Kedel turn it into long lasting, maintenance free landscaping materials, with the look and feel of real wood but that can last a lifetime, so you just do the job once!

The slightly higher initial price of recycled plastic wood is quickly recovered through savings on maintenance or replacement, resulting in lower lifetime costs when compared to real wood designs. This initial outlay can be recouped in as little as 2 to 5 years. Recycled plastic decking is splinter free, frost proof, shock proof, resistant to most chemicals and impervious to fungi and water.

Kedel Marine Decking Boards can be used for various landscaping projects and are ideal for boardwalks, pontoons, jetties, access ramps and fishing pegs.

For more information on any of Kedel's products and services, contact us today for help and advice.

T 01282 861325
info@kedel.co.uk
www.kedel.co.uk

RMC

Equipment

SHARP GRADE LEVELLER

All you have to do is choose your tool carrier and if you want to work in 2D or 3D

Find out more at

www.SharpGrade.uk

📧 peter@rmcequipment.co.uk

☎️ **07973 175 244**

VINES DIRECT LTD

EST. 2006

NEW VINEYARD ESTABLISHMENT

IN EAST ANGLIA & SOUTH EAST ENGLAND

- **SITE SELECTION & SITE ASSESSMENT:** Correct choice of site is vital in the UK's northerly winegrowing climate.
- **VINEYARD DESIGN:** Design of your trellis system and density of plantation is offered as a standard part of our service.
- **PRE-PLANTATION ADVICE:** All advice and organisation of soil & site preparation works.
- **GRAPEVINE SUPPLY:** All vines sourced through one partner nursery, proven vine establishment over many years.
- **VARIETIES, CLONES, ROOTSTOCKS:** All combinations created to suit your vineyard site and target wine styles.
- **PLANTING:** Planted by GPS guided machine, accurate to within 8mm.
- **TRELLIS MATERIALS:** We supply everything, sourced direct from the factory to ensure lowest possible prices!

WE HAVE 50 YEARS COMBINED EXPERIENCE IN VINEYARD MANAGEMENT.

YOUR VINEYARD WILL BE IN THE GROUND FOR MANY YEARS.

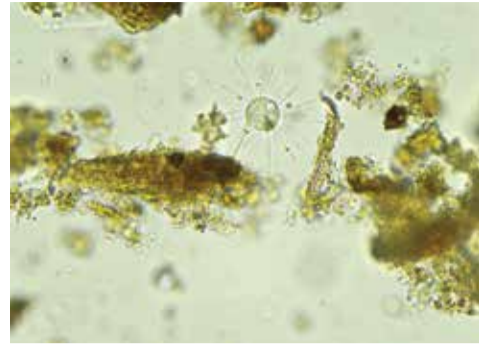
GET IT RIGHT FIRST TIME, WITH

DUNCAN MCNEILL AND VOLKER SCHEU OF VINES DIRECT LTD.

CONTACT **DUNCAN MCNEILL** ON **07972 668370** OR EMAIL NADINE@VINES-DIRECT-LTD.COM

SAF Woodland Management

In the 1960s Maureen Iddon was a pioneer of the post war era. Her decision to start a plant nursery, earned her a reputation in growing and breeding rare herbaceous plants that spanned more than 30 years, including exhibiting at national Royal Agricultural and Horticultural Flower Shows. Observing plants, nature and creating a healthy growing stock has been the bedrock of the family business across three generations.




Grandson Daniel Iddon switched the family

nursery to trees in 2019. Growing healthy plants is essential, but the challenge is whether we can grow trees to also suit their planting environment. This challenge drove Daniel to relocate his nursery operations to his woodland in Pembrokeshire. Planting trees from the growing trials in his woodland, he noticed how the trees were changing outside of the carefully controlled environment (soil moisture, air humidity, chemical food source), adjusting to the new climate local to the woodland with an abundance of bacteria, fungal species and microbes in the soil.

During growing trials to support the SAF Woodland investment in the Ellepot growing system, opportunities for improvement in the growing medium was identified. SAF Woodland are now developing a living soil to bring the woodland environment into the nursery. The research is being funded by The Forestry Commission Tree Production Innovation Fund (TPIF) in 2021 that has been designed to encourage the development and adoption of new technologies and ways of working that will enhance the quantity, quality and diversity of tree planting stock available for planting in England. By 2025, the government is seeking to dramatically increase tree planting to 10,000 hectares per year in England. To meet these planting targets domestically will require a corresponding increase in the UK production of tree planting material.

For more information:
T 01239 611980
info@safwoodland.management
www.safwoodland.management



Solar Solutions to Lower Carbon and Energy Costs

THE SOLAR HOT TUB HEATING SOLUTION

Let our award-winning solar collectors heat your hot tub without breaking the bank

Why choose the SolarisKit HT100 Hot Tub Heating Kit:

- Easy DIY installation
- Lower your energy costs
- Low maintenance
- Easy-to-follow instructions
- Visually attractive and discreet
- 2-year Guarantee
- ISO 9806 EU Certified
- Eco friendly, lower your carbon emissions

Summer Special!
Save £25



Buy online at www.solariskit.com & save £25 on your order using code **INTGLAMPING22**. Offer ends 31st July 2022.

As featured on






Pretty Wild Seeds




Pretty Wild Seeds are a professional, family business, fully registered with DEFRA who specialise in both grass and wildflower seeds. We supply wildflowers & wildflower mixes and a wide range of both amenity and agricultural grass seed ready to suit your building & construction projects.

We do understand though, that not every project is the same so we're very happy to create bespoke mixtures for customer requirements, whether that means a slight adjustment of mixture constituents or a fully 100% bespoke mix for your specialist needs. When you get to the stage of your projects where you need to source certified grass and wildflower seed to finish the job off, Pretty Wild Seeds really are one of the largest and best companies in the UK for it.

And with an ever-growing reputation which has seen us supply seeds to some of the biggest companies in the country, you too can be confident in both our products, and our advice.


Pretty Wild Seeds, Valley Street North, Darlington, DL1 1PY

01325 353596
sales@prettywildseeds.co.uk
www.prettywildseeds.co.uk



UNIQUE GLAMPING PODS

Come and see what we have to offer, and be amazed!



UNIQUE DESIGNS

-

HAND CRAFTED


-

SUBSTAINABLE

Unique glamping design built by artisans in the Forest of Dean, using locally sourced Oak, Sycamore and Sweet Chestnut.


Pods can be designed to fit your specific requirements. Talk to us about your project vision.


WWW.PUREPODS.CO.UK



GRASS & WILDFLOWER SEED SPECIALISTS

WWW.PRETTYWILDSEEDS.CO.UK






PROUD TO BE ONE OF THE LARGEST AND BEST COMPANIES IN THE UK FOR GRASS AND WILDFLOWER SEEDS AND MIXES.

IF YOU HAVE A TINY GARDEN OR A LARGE FARM, OR YOU'RE LOOKING FOR SOMETHING SPECIALIST, WE HAVE THE PASSION AND KNOWLEDGE TO MATCH YOUR PROJECTS.

PRETTY WILD SEEDS; LET'S GROW TOGETHER.



Curaflex Nova

The Curaflex Nova range from DOYMA, available exclusively from Service Sealing Solutions Ltd:

The Curaflex Nova Uno M/T has been designed to seal pipes and cables that have been already installed, the hinged design makes it easy to install and the replaceable insert means that you can even add services at a later date.

The Curaflex Nova Multi with its modular sealing inserts

means that you can install the gasket with the blind plug to seal the penetration completely, then when the service is to be installed the modules can be removed to seal the pipe/cable.

For more information:

T 01952 510050
sales@service sealing solutions.co.uk
www.service sealing solutions.co.uk



Curaflex Nova Multi



Curaflex Nova Uno M/T

App Site Services



Number One Tool Hire Specialist for Air and Hydraulic tools. If you're looking for solutions for your construction site, then call us today.

APP Site Services are a leading distributor of site supplies and services to the construction industry. One of our main focuses of the business is our hire and sales department for construction tools.

Here at APP Site Services, we provide an excellent service, not only with the range of products but with the level of care each order is given and the speed with which we can deliver.

We have a range of [tools and associated products available to hire](#). Some of the tools we specialise in: [Rebar Cutters](#), [Rebar Benders](#), [Concrete Splitters](#), [Concrete Combi Shears](#) and [Pneumatic Picks](#).

Whatever your scenario we have an option for you...

For our full range of products visit our website or call the office on: 01909 519519. Most tools can be shipped next day and be hired for various lengths of time.

We are happy to help and support your business and look forward to hearing from you soon. APP Site Services is part of the APP Group.

Contact

www.appsiteservices.co.uk



WE ARE SPECIALISTS IN R&D TAX

If your business needs a **CASH BOOST** an R&D tax relief claim could deliver it!

We've submitted claims for all kinds of businesses in the construction sector, and on average our clients receive

£56k

for **EVERY YEAR** that they claim.

Let our specialists find the benefit that could be hiding in **YOUR BUSINESS** today!

Let's have a conversation and raise some funds for **YOUR** business



We have secured more than **£20 MILLION** worth of benefits for our clients

01744 613 679
sales@randdreclaims.co.uk
www.randdreclaims.co.uk



R and D Reclaims Ltd, 2 Gerards Park, College Street, St. Helens, Merseyside, WA10 1FZ

DK Tools extend Amtech reach into builders merchants

DK Tools Limited is a family-owned company which was established in 1986, from humble beginnings. The business started out selling tools from a market stall in North West London and now they manufacture and distribute both hand tools and power tools under the Amtech brand.

For over thirty years, DK Tools have maintained their core family values and have built the business on a foundation of exceptional customer service and their 5-star Trustpilot reviews are certainly testament to that level of integrity.

Ishan Kalra, Director at DK Tools commented: "My father has built and maintained strong working

relationships with key customers across Wholesale, Cash and Carry and Retail over the years and our product portfolio now spans 2000+ tools for the home, garage, and garden. My objective is to continue with this legacy of adding value where it matters for all our trade customers".

Trade customers really value the ease of ordering Amtech stock, either via their award-winning dktools.com website or even via WhatsApp for next day delivery!

The Amtech DIY brand has also grown significantly across Independent Retail and consumers really value the free end-user support that is provided at

amtechdiy.com. Furthermore, and as the cost-of-living crisis settles in, the Amtech brand also now appears to be resonating with Builders Merchants, as both Buyers and Tradespeople begin to source more value for money, whilst still maintaining good tool quality.

You can become an Amtech stockist or register for a trade account at dktools.com.

For more information:
T 01895 435556
contact@dktools.com
www.dktools.com



Protection built on trust

We have proven experience and expertise across a wide variety of construction industry trades and sectors, from Contract Works, Employers/ Public Liability and Performance Bonds to Professional Indemnity, Motor Fleet, Management Liability, Cyber Liability and Healthcare.

Justin Chadwick
Executive Director
DD: 0113 531 2734 M: 07458 110580
E: Justin.Chadwick@attisinsurancebrokers.com
A: Millshaw, Leeds, LS11 8EG

www.attisinsurancebrokers.com

Attis is a trading name of Attis Insurance Brokers Ltd, a company that is authorised and regulated by the Financial Conduct Authority (FCA)



heliomotion
solar tracking power plant for home owners

Bee Solar Tech
beesolartech.co.uk

3 different sizes available

- ▶ Complete solar energy solution shipped sustainably
- ▶ Straightforward installation with illustrated assembly guide
- ▶ Produce your own electricity and reduce your power bill
- ▶ 30-50% more energy generated compared to static panels
- ▶ Premium quality and elegant design

+44 3333 034366
www.beesolartech.co.uk
sales@beesolartech.co.uk

Intelligent renewable energy



Is your home future proof? Are you concerned about energy prices? Are you worried about your home's carbon emissions?

You could install a Heliomotion ground mounted solar tracking system yourself in less than a couple of days, and if you move, you can take it with you.

This is Heliomotion – Build It Magazine's best home technology award winner, designed and manufactured in Finland and the UK, made from topgrade steel and aluminium. Unlike roof-based solar panel installation, solar tracking systems follow the sun from sunrise to sunset every day and because of this they generate significantly more electricity than a static ground mounted or roof mounted Solar PV installation.

They are ground mounted using either a custom steel plate and ground anchors, or using a concrete plinth. Ground anchors are a far more eco-friendly solution and can be installed in less than an hour. There are four different sizes, and they can be used singly or in multiples, either on or off grid. Pop one in a sunny corner of your garden and watch your bills go down.

- Benefits:
- ▶ Complete solar energy solution
 - ▶ Straightforward installation
 - ▶ Produce your own electricity
 - ▶ Premium quality.

You can talk to the team at Bee Solar Tech about installing multiple systems, solar panels, inverters and your future battery storage requirements.

To find out more about their solar solutions, please visit: www.beesolartech.co.uk



asbriplanning

PLANNING & DEVELOPMENT CONSULTANTS

Professionalism and practicality – that's what you can rely on from Asbri Planning. Our experienced team knows what it takes to achieve planning permission for all types of development and our style is to be open, honest and provide 'no nonsense' advice.

Please visit: www.asbriplanning.co.uk
 ☎ 029 2073 2652
 ✉ mail@asbriplanning.co.uk

BURNSIDE
Sheet Piling Contractors

BURNSIDE PILING SPECIALIST

PILE HIRE / SALE AND INSTALLATION
 Foundation piling sheet piling movax specialist | Tubular Piling

T: 01416479331 E: enquiries@burnsideplant.co.uk
www.burnsideplant.co.uk

WernerCo to reach new heights with Ladder Safety Campaign



WernerCo, the leading access equipment specialist, has unveiled a new safety campaign – Stepping up to Ladder Safety – to promote best practice when working at height.

The campaign explores how to stay safe on site for both construction workers and health and safety professionals. As part of the campaign, WernerCo has created a series of guides covering topics such as how to use equipment safely as well as offering practical training courses.

To launch the campaign, WernerCo has recently carried out research amongst professionals and non-professionals to determine their work at height practices. The research revealed that when purchasing access equipment, stability and safety are the most important factors when choosing equipment for professionals, secondary to price and value.

WernerCo has also recently become a Gold Supporter of the No Falls Foundation, a charity dedicated to working at height and height safety. The charity has three objectives: raising awareness of the risks associated with working at height; undertaking research into the causes; and providing guidance and support for those affected by a fall.

Justin White, Managing Director for WernerCo UK, commented: "Year on year falls from height remain the leading cause of workplace fatalities and we continually see accidents in the home due to the incorrect use of work at height equipment."

"The research we have carried out for Stepping Up to Ladder Safety shows that tradesmen want to prioritise their safety and as manufacturers we have a duty to advise best practice when using access equipment."

"Our research revealed that 48% of people worry about safety when working at height, that is why we created a series of best practice guides to help users feel more confident when using access equipment. By launching Stepping up to Ladder Safety we hope to encourage users to think about whether they are using the right tools for the job and how they can safely use their equipment to prevent accidents occurring."

The campaign includes a coordinated online and onsite approach with WernerCo offering training to professionals and customers for the use of ladders and towers, covering Do's and Don'ts for ladder users and how to inspect ladders correctly. WernerCo has also recently appointed a specialist Training Manager, Trevor Rabson, who specialises in work at height safety and provides a wide range of on-site training to customers and end users across the country.

Justin added: "We have some really exciting plans in place to bolster the work we've already done to help reduce accidents at home and in the workplace. We pride ourselves on providing safe work at height equipment that goes through rigorous testing and meets all the relevant safety standards and now we want to go that step further and support people when using our equipment."

To view WernerCo's Ladder Safety Guides please visit: www.wernerco.com/uk/ladder-safety

To find out more information on the range of access solutions and training available from WernerCo please visit: www.wernerco.co.uk

Qualitative and quantitative fit Testing and fit test training

We have experience in face fit testing, and we have Fit2Fit accredited fit testers in our team. Meaning our methods have been checked and confirmed with best practice for face fit testing in line with the BSIF and HSE.

Our experienced dental team, with a wealth of dental experience are now delighted to be able to offer a fit test service for FFP3, FFP2 and FFP1 masks. Using the 3M qualitative testing kit, we can arrange appointments at your workplace to fit test your staff, with your own masks. Quantitative face fit testing eliminates the guesswork associated with error-prone qualitative fit test methods. Using the PortaCount Pro Respirator Fit Tester 8030 fit tester, we can now quantitatively fit test so many types of respirators – gas masks, SCBAs,

respirators. If the mask requires fit testing, count on the PortaCount Pro fit tester to provide the fastest and easiest HSE (UK) and OSHA (US)-compliant fit test method.

We also provide fit test training at our Head Office in Winnersh, Wokingham- The Train the Tester course to provide you with knowledge, skills and confidence or Train the Tester RPE Refresher, which is hands on and practical.

Contact Andy at andy@cavity-fit-test.co.uk or call 0118 214 6192 to get your local fit tester today.

You can visit www.cavity-fit-test.co.uk for more information.



RP Associates is a global outsourced company specialising in **Procurement, Credit Control & Marketing.**

RP Associates provide a first class service, from consultation to facilitation, ensuring all clients' needs are met, sourced and delivered.

Our global network is on hand, ready to proceed.

Please email roger@rpassociates.eu

Associate Offices Located in USA, Japan and Estonia

Contact: roger@rpassociates.eu UK (London) +44 (0)207 206 7349
 UK (Sussex) +44 (0)1825 791703 UAE (Dubai) 00 971 (0) 56 332 0803

THE GLOBAL SUPPLIER OF PERIMETER SECURITY EQUIPMENT

With 40 years industry experience, developing our market leading technology to create highly effective, reliable and robust solutions. You can be sure our systems will give you the defence in depth you need.

As an ISO9001 accredited company you can be sure of the quality of the systems that we sell. Our systems have successfully completed rigorous independent testing; this is another guarantee of the reliability and durability of Advanced Perimeter Systems equipment. All products come with a one-year warranty as standard.

Visit www.advancedperimetersystems.com
 +44 (0)1786 479862 | sales@apsltd.net

Not just any installation
 It's an eCO friendly one

Working across a range of sectors, we deliver projects between £10k and £4m.

For more information please contact us.
 info@eco-1.co.uk 01922 214007

The Trusted Electrical Installation company delivering:

- Design & build projects
- Full energy solutions
- Maintenance & compliance services

For more information on project enquiries or career opportunities visit: www.eco-1.co.uk

Reliable and safe access equipment

Atlantic Access Ltd are scaffolding erectors and hirers based in Liverpool and the North West. Providing safe, access equipment for a multitude of different jobs including roofing, bricklaying and much more, for industrial, domestic and commercial projects.

Maintaining a committed, skilled and loyal team, Atlantic Access Ltd offers a highly professional service and utilises its experienced and expert team of long serving employees, of 10 years plus. This has positioned the company with the industry knowledge to assist with varying sized projects and Atlantic Access Ltd has built a strong reputation for its high quality service, personable approach and competitive prices.

The company offers its services for all residential work, new build properties, demolition work and commercial. Some of its recent

commercial projects include: Vinci IHP on Preston Royal Hospital, the Boohoo main office in Manchester for Hightown Construction, Grahams Liverpool flyovers demolition, Parkinson Construction on Oldham Royal Hospital and Salford Hospital, John Turners on Whiston Hospital, ongoing Maintenance package for Daresbury Science Technology Park and ongoing works for the National Trust on Speke Hall and Chambre House in Liverpool.

If you would like to find out more, please see the details below:

Steve Long, Director,
T 0151 549 1551
M 07917 193357
ste@atlanticnw.co.uk
info@atlanticnw.co.uk



Hardware Warehouse



Hardware Warehouse is one of the UK's largest online stockists of metal and plastic profiles, sheet metals, hooks and flooring accessories. As well as having a large stock holding, they also offer next day delivery as standard, meaning you get your order as quickly as possible.

With no minimum or maximum order value and graduated pricing, it means the more you buy, the more you save. Both commercial and domestic customers are equally catered for. If you need a bespoke quote on a large quantity – no problem, simply get in touch and get the best possible price.

The products are widely used in numerous applications and industries, including glaziers, engineers, designers, and plumbers to name a few. This is mainly due to the vast range that is stocked. Most popular materials are PVC, Mild Steel and Brass.

Most of the profiles are available in 1m and 2m lengths. If you have a commercial address, you can benefit from reduced 2m delivery rates by simply registering as a business customer through the Hardware Warehouse website. Plus spend £100 or over on 1m lengths (ex VAT) and £150 on 2m lengths (ex VAT) and get your delivery absolutely FREE!

The last couple of years have been tough for all industries, especially retail, however Hardware Warehouse have powered through and continued to provide their customers with top quality products and first-class service. They recently launched a Click and Collect service, meaning customers can not only save money on delivery cost, but also order and collect their products the same day.

"We are based in Romsey, Hampshire and knew we needed a solution to ever increasing delivery costs, especially with the size of the products we sell. The Click and Collect service has been so popular with the businesses that surround us as they can get their hands on what they need pretty much immediately!" commented owner, Katie Clarke.

As well as the Click and Collect service Hardware Warehouse have also invested in a brand-new website, which is due to launch by the end of 2022. Each added feature in the new site is there to make the overall shopping and ordering process easier for the customer. This includes the ability to request a quote, which can then be turned easily into an order, being able to see when out of stock items will be back in stock and the ability to repeat previous orders in one click. Katie is obviously proud of what the new website will offer customers, "One thing we pride ourselves on above everything else is our customer service. Every feature on the new site is there because customers have asked, and we've listened. However, we will always also be at the end of the telephone, ready to help in any way possible".

Why not check out the full range at www.hardware-warehouse.co.uk, spend £20 or more and use code **BEST10** to receive 10% off your order!

Contact
T +44 (0)330 333 5030
info@hardware-warehouse.co.uk
www.hardware-warehouse.co.uk



HARDWARE WAREHOUSE

ONE OF THE UK'S LARGEST STOCKISTS OF METAL & PLASTIC PROFILES!

- Metal and plastic profiles in 1m and 2m lengths
- First class customer service
- A large range of sheet metals and hooks
- Happy to quote and place bespoke orders for large quantities
- No minimum or maximum order quantity
- Ability to Click & Collect - based in Hampshire
- Multi-buy discounts available - the more you buy the more you save!

+44 (0) 0330 333 5030
info@hardware-warehouse.co.uk
www.hardware-warehouse.co.uk



Use code **BEST10** to receive 10% off your order*



*Terms & Conditions may apply

PERFORATED PANELS COMBINE SAFETY, FUNCTIONALITY AND AESTHETICS

Overlooking the Manchester City Canal, a total of 500 apartments are being built in Manchester Waters. The location, quality and facilities are unique, and the selection ranges from studios to 3-bedroom apartments. The first blocks are finished and stand as a symbol of the new Manchester.



Premium waterfront living on this level must offer all amenities, including the ability to park near the residence. Therefore, car park facilities have been established on the lower level. In this connection, RMIG Solutions has supplied facade panels for covering the car park.

The facade panels presented several challenges. Aesthetically, the panels should be decorative and match the architecture. Functionally, they should have an extraordinarily large open area, as the rest of the basement is surrounded by solid walls. Finally, the panels should appear in a raw finish, directly from the mill.



The task was solved thanks to a close and trusting collaboration with the architect. Aesthetically, the choice fell on a botanical pattern with a closed surface at the top that hides the concrete deck.

An open area of 50% is difficult to achieve in this thickness (3mm), particularly in an aesthetic finish, but with precision tools, the sales and development departments at RMIG Solutions managed to increase this. The architect proposed displacing some of the panels to provide extra ventilation, and this ultimately resulted in an open area of approximately 75%.

www.city-emotion.com info.uk@rmig.com 01925 839610

Retrofitting windows and doors - warts and all!

George Barnsdale has announced the latest in its series of CPD webinars - "Retrofitting windows and doors - warts and all" which launches online on 17th November 2022 at 1pm.

Whilst we all recognise that retrofit is one of the keys to our drive for zero carbon in construction, it's not an easy option. Aside from the issue of VAT on such projects compared with zero on new buildings, there are often a few hidden nasties hidden away in the building's envelope.

The session will cover:

- ▲ Why there's never been a better time for Retrofit
- ▲ The principles of ESG - how large social landlords are leading the way
- ▲ A fresh look at the opportunities retrofit can create for us all
- ▲ A Developer's perspective - Julia Webb - Building Surveying Director at Dorrington PLC talks about her own personal commitment to

retrofit in her role
 ▲ A warts and all look at the potential problems you can face when installing new windows and doors into old buildings with Stephen Wright, George Barnsdale



Scan the QR code to sign up



Demand remains high for infinity rooflights

Knowsley-based toughened glass specialist, TuffX, is delighted to report a strong start to 2022 for its Infinity range, with continued high demand for its Infinity rooflight products.

Since TuffX's launch of its Infinity range at the end of 2018, there has been a steady and on-going increase in demand for both its standard and walk-on varieties of rooflight. This sustained upward trend has paved the way for TuffX to recently begin extending its current factory - with construction works completing in Autumn this year - to further enhance production capacity for its entire Infinity range.

TuffX's Infinity rooflights are designed to bring more natural light into the home and increase its flow between floors, offering an effective modern alternative to roof lanterns when forming part of an orangery, full rear extension, or when used for basement conversions and roof terraces. The range has proved increasingly popular with homeowners, as well as builders and installers, thanks to its sleek, contemporary yet low-maintenance aluminium finish, along with a hassle-free 'drop-in-and-seal' installation that requires no additional assembly of the units on site.

"With full time and hybrid models of home working remaining the norm for many, there are still high numbers of homeowners approaching builders and window installers to make home improvements that increase, or simply improve, their workspace and living spaces," said TuffX's Commercial Director Paul Higgins.

"We're seeing ever more interest and enquiries for our rooflights, which are available in a range of glass finishes and glazed into a powder-coated aluminium frame as a complete unit. With our rooflights installers can add a simple, easy-to-fit yet high-value contemporary product to their portfolio of customer offerings, which we can deliver directly to site throughout the UK.

"We're delighted that after 25 years at the top of the trade we continue to be a strong reliable supplier, consistently offering products our customers want even under the challenging current economic circumstances."

To find out more about TuffX and the entire Infinity range, please visit: <http://www.tuffxglass.co.uk>

T 0845 3400 200





Tel: 0845 3400 200 Email : sales@txpro.co.uk

Tuffx Processed Glass Ltd, Nexus House, Randles Road, Knowsley Business Park, Knowsley, Merseyside L34 9HX



- Thermal aluminium, fully glazed system
- Double 1.2 U-Value, or Triple 0.7 U-Value
- Available in clear, solar & privacy glass
- Anthracite Grey frame as standard
- Delivery 3-4 working days on standards

Standard Stock Sizes

1000mm x 1000mm*

1000mm x 1500mm*

1000mm x 2000mm*

1000mm x 2500mm*

*Internal opening size

Maximising the flow of natural light



THERMAL WALK ON ROOFLIGHT

Thermal aluminium, fully glazed, walk-on rooflights designed to transform dark basement or roof terrace areas, allowing natural light to flow in the rooms below, whilst maintaining the thermal properties within the home.

- Walk-on toughened laminated glass
- Suitable for internal & external installations
- Quick turnaround times
- Bespoke Sizes available
- Available in a choice of clear, privacy & anti-slip





BOOK YOUR CPD TODAY
fireglassuk.com/cpd-seminar/



YOUR VISION IS OUR BUSINESS

FIRE & SAFETY GLASS EXPERTS

THE SAFER CHOICE

- STOCKISTS OF ALL KINDS OF FIRE-RATED GLASS
- FIRE GLASS & SAFETY GLASS SPECIALISTS
- FIRAS CERTIFIED INSTALLATIONS
- EXPERT TECHNICAL HELP & ADVICE
- INSULATED GLASS UNITS

FIRE RATED ACOUSTIC LAMINATED TOUGHENED GLASS

FIRE GLASS GUARANTEE FIRE GLASS

NATIONWIDE DISTRIBUTION FROM WELL-STOCKED LOCAL BRANCHES

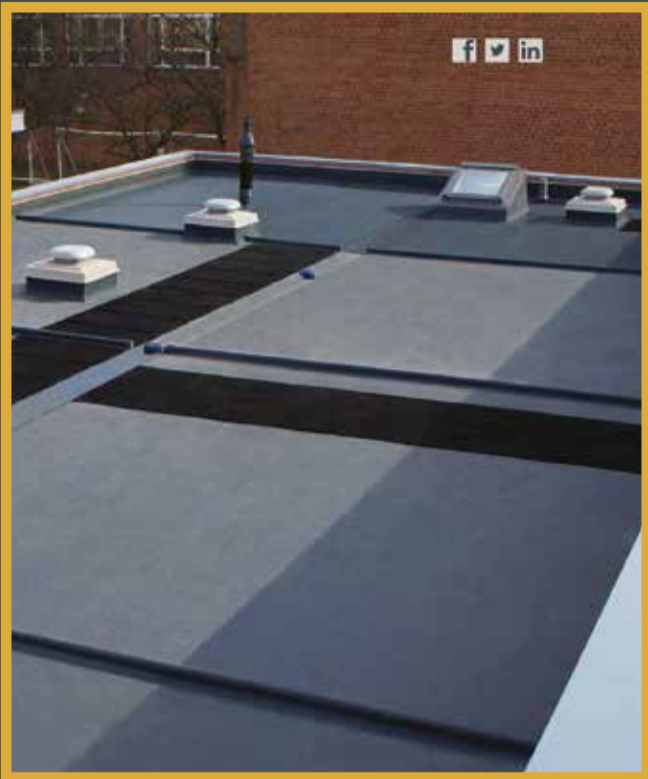
- | | | | | | | |
|---------------------------|------------------------|------------------------|-----------------------|----------------------------------|---------------------------|-------------------------------|
| | | | | | | |
| MIDLANDS
0121 667 9089 | NORTH
0161 532 8371 | SOUTH
01206 805 922 | EAST
01773 712 920 | WEST NEW
01174 528 800 | SCOTLAND
0131 526 4141 | INSTALLATION
0121 667 9089 |



0121 667 9089
WWW.FIREGLASSUK.COM

TRUST THE EXPERTS

ww



FLEXIBLE GRP

Providing an exceptional combination of versatility and durability. Quick to lay, with no need to strip or re-deck a roof, this fast-curing system saves time and money.

It's a single-resin solution which can be applied to a multitude of surface types and structures including vertical sections.

With two coats applied within one hour, TuffStuff® Flexible GRP will form a highly flexible, extra tough and seamless waterproof membrane - can be a solution for areas of heavy duty foot traffic.



TUFF STUFF
FLEXIBLE
GRP

www.tuffstuff.co.uk

T 01977 680250
orders@tuffwaterproofing.co.uk

FOR ALL YOUR BUILDING NEEDS!



Experience unbeatable service today

**Grant
& Stone**



**Building
Supplies**
A company well built

£40 OFF
YOUR FIRST
ORDER!

Bring this advert in to any
Grant & Stone or RGB
branch to receive £40 off
your next qualifying order*

www.grantandstone.co.uk | www.rgbltd.co.uk

Find us on social for
news & offers!

*Terms & Conditions apply. Orders must be over £250 (exc VAT) to qualify. Only available to new customers at this time. No cash alternative. Offer ends 31/03/2022. Grant & Stone Ltd, Rawle Gammon & Baker Ltd. Registered address: Unit 2, Mill End Road, High Wycombe, Buckinghamshire HP12 4AX.





Specialist in large section timber,
irregular sizes and long lengths.
Sections 600 x 600 and lengths to 15m.

Planed, treated timber, railway
sleepers, tile battens, arris rail, feather
edge boards, telegraph poles, glulam
and more.

WARDELL

LONG LENGTHS

Tel: 01469 532922

info@longlengths.com www.longlengths.com