

Building & Construction Review



Quality bespoke joinery – crafted to perfection



Bluerun manufactures quality, bespoke joinery items and everything is made to order, nothing is 'off the shelf.'

If you're looking for items made from both hard and softwood or even veneered and painted panels, Bluerun can reproduce an array of items including replacement sashes, where it can manufacture a brand new one on a like for like basis, so the mouldings will match.

Bluerun only produce purpose made joinery to client's drawings and specifications. Its unrivalled level of customer services means that free quotations are normally provided within 2-3 days or less, and the company can usually deliver a quick turnaround of any manufactured items required. And, because it has an experienced spray operative in charge of a modern spray paint and lacquer



facility, articles can leave the factory in a fully finished state, ready for installation on-site.

What really sets Bluerun apart is that since its establishment it has never used computer aided machinery for any designs. Crafted to perfection, all items are finished by hand, drawings are prepared with pencil and paper, and everything that is manufactured by the team has been done so with the utmost attention to detail.

T 01799 599995
dee@bluerunltd.co.uk
www.bluerunltd.co.uk



Eco Clipper FM4 Sport for sporting grounds

Eco Clipper offers large area mowers that help field managers minimise mowing costs while producing a professional cut. The Eco Clipper mowing system was originally developed to replace the cylinder mower in turfgrass production. The aim was to retain the cutting performance of a well-tuned cylinder mower, but not the high maintenance requirements and sensitivity to mowing conditions, such as wet grass and weeds.



and park managers have also discovered the advantages of the Eco Clipper mowing system. For them, Eco Clipper offers the EC-FM4 Sport. This 4.11m wide mower has four independent mowing decks. Its position in front of the tractor provides excellent visibility and comfort for the tractor driver.

The system

The smooth cutting decks with fast spinning small blades ensure a high quality of cut and a good distribution of clippings. Even in wet grass, the clippings are well distributed. This makes it possible to schedule this mower almost independently of the weather.

The benefits

Users report high productivity gains, a factor two compared to 5-gang self-propelled cylinder mowers, and appreciate the low maintenance need and the ability to schedule the mowing even in less favourable mowing conditions, such as early morning dew and wet autumn.

Thanks to the electrically driven blades, the mower is very economical and quiet. The large wheels and smart mower deck linking system ensure good contour following and enable high mowing speeds.

For more information, contact:
info@vanmac.co.uk
www.ecoclipper.com

Municipalities and sports field



Bartels & Vedder
 Turn to page **04**



Independent Access Sales
 Turn to page **05**



Bluerun Ltd
 Turn to page **07**

The power of thoughtful design



Founded in 2012, Southside Waterjet is situated on the south side of the river Thames. Southside Waterjet is a family-run fabrication company dedicated to an innovative approach. It believes in exceptional design and attention to detail. With a reputation firmly built on quality, reliability and with a fresh approach to the likes of which haven't been seen before, Southside Waterjet has become a leading name in its industry favoured by architects, interior designers, contractors and customers across the UK.



bathrooms, wet rooms and vanities, bespoke furniture and artwork, outdoor kitchens and much more.

For commercial customers, Southside Waterjet win contracts with large numbers of contractors, architects, designers, and stone and tile distributors. It fabricates material to their exacting requirements creating architectural solutions, bespoke and customised wall, floor and staircase designs, furniture trends and swimming pool solutions.

Today, Southside Waterjet is made up of a small but dedicated team of professionals who have decades of experience in custom fabrication techniques that ensure our quality is never compromised.

For more information, please see below:
 T 02032 212133
www.southsidewaterjet.com

Do you long for an island that will take centre stage in your kitchen? Are you wanting to create a wow factor in the smallest room in your house? For residential customers Southside Waterjet has the capabilities to fabricate everything you need including customised flooring and wall coverings, luxurious worktops and splash backs,



DCON Safety Consultants
 Turn to page **12-13**



Ecomerchant
 Turn to page **22**



Wardell Long Lengths
 Turn to page **24**

WASTE TRANSFER SYSTEMS.

SANITATION SOLUTIONS FOR FLOATING HOMES & MARINA DEVELOPMENTS.

- Supply / Installation
- Testing and Inspection
- Consultancy Service
- Maintenance Contracts
- Servicing

LeeSan
 Marine • Welfare • Leisure

+44 (0)1295 770000
sales@leesan.com
www.leesan.com



BIG UP YOUR WORKSHOP

Change the game with the **BiG340** shelving from BiGDUG.

An extremely durable and reliable storage solution perfect for industrial and retail environments.



SCAN TO SHOP

Zoo Architectural Hardware

Zoo Hardware are designers and suppliers of architectural door hardware including door handles, knobs, locks, cylinders, door closers, hinges and more. All of their products are produced to the highest quality in aluminium, brass, steel and zinc. Every item they produce is selected for its quality and value for money and they never compromise quality for cheaper prices. Zoo Hardware are confident in their belief that they can offer some of the highest quality products at the

most competitive prices on the market.

Their in-house design team is fully qualified in all aspects of design and production and they constantly aim to supply innovative, stylish and cost-effective hardware solutions settling for nothing less than top quality. Design facilities at their head office means they can create, manufacture and deliver state-of-the-art products to stay in-tune with current design trends and ahead of the competition.

The Zoo Hardware product ranges cover all aspects of architectural ironmongery, including: Vier – a precision design range of levers, hinges, door closers, DIN locks and cylinders created for the exacting needs of Architects, Specifiers and Contractors; Fulton & Bray – traditional and classic brass door hardware and accessories ideal for period and contemporary properties; Rosso Tecnica – a new European inspired range of designer levers

and accessories made from SS304 and finished in a selection of new hard-wearing finishes; and Foxcote Foundries – a wide range of traditional black antique door furniture and window fittings.

View their full range of products at: www.zoohardware.co.uk or call one of their friendly sales team on: +44 (0)1228 672900 to discuss your requirements or to request a catalogue.



TAKE THE WORRY OUT OF YOUR INVESTMENT WITH SOFT WATER!

- Robust and reliable British engineering
- Top-quality components with low maintenance
- Monitor salt with a Smart Connection
- Benefit from Harvey's commissioning service
- Competitive pricing for small-medium developments

Discover how to protect your investment



www.harveywatersofteners.co.uk



A Culligan company







BULK BUY DISCOUNT AVAILABLE

London's leading sash window & joinery manufacturer



For over 35 years, Landmark Windows & Joinery has been tailor-making windows. As a family run business whose team of craftsmen boast an extensive history of experience in the manufacture, repair and restoration of traditional windows, Steve and his two sons Tom and Ben have built up a reputation as a leading authority in the timber sash window sector.

Using the latest technology combined with a traditional approach and expert craftsmanship, Landmark Windows & Joinery have three core products; Sliding Sash Windows, Casement Windows, and Hardwood Doors.

Between 80-90% of the company's business is repeat orders from other sash window companies and Landmark's Trade Partner Program for Traditional Hardwood Sliding Sash Windows. Their unrivalled level of attention to detail supported by efficient lead times and flexible window specification means they have an impressive number of examples of Heritage Sliding Sash Windows that have been used for many conservation areas and listed buildings.

Since 2020, the company experienced a growing demand for their quality sash windows from other companies that cannot manufacture in-house. Landmark soon realised that the best way to ensure London's conservation areas and heritage properties are best maintained for the future was to develop a Partner Program.

If you're interested, please go to the website where you can register for a trade account today with huge benefits that include marketing material, inside information on the best pricing and lead times, job opportunities, access to Lead Tracking Software, and much more.

www.landmarkwindows.co.uk

Innovative 'floating' solutions

BARTELS & VEDDER

Interdisciplinair Ingenieurs & Consultancybureau

Building & Construction Review is proud to present Bartels & Vedder BV with our Commitment to Excellence Award for its ongoing innovative developments in the construction industry.

The founders of Bartels & Vedder, Jelle Vedder and Chiel Bartels started in 2004 with building floating structures on water with the firm Aqua Life Nederland bv. The engineering firm Bartels & Vedder BV itself was founded in 2011 by Jelle Vedder and Chiel Bartels to find appropriate answers to existing technical problems.



Today, Bartels & Vedder BV is known as one of the best interdisciplinary engineering and consultancy agencies that specialise in innovative solutions for the construction, industry and offshore sectors. Bartels & Vedder BV is a collaboration that has led to a strong team of specialists who use integrated and interdisciplinary approaches to traditional construction, infrastructure, non-residential construction, offshore and floating projects.

"At Bartels & Vedder BV, we pride ourselves on working as a team with specialists from feasibility studies to actual realisation of the project, working on innovations and making buildings possible. This all comes from a practical sense and with realistic solutions," stated Jelle.

Over the years, the company has created some innovative, ground-breaking infrastructures on both land and water. Using its expertise to develop 'flood proof' buildings that float on water, here are just some of these referenced 'flood proof' projects:

- ▲ Floating houses and villa's
- ▲ Floating parks
- ▲ Floating offices
- ▲ Floating islands
- ▲ Floating neighbourhoods and cities
- ▲ Floating solar
- ▲ Floating jetties
- ▲ Mooring structures
- ▲ Fendering
- ▲ Bridges



"One project worth noting is when we completed the feasibility study, engineering, supplied the floating techniques, and did the project and site management for one of the larger floating commercial buildings in the world, the floating ferry terminal in Malaysia of 6,000m². We have also engineered the largest floating



office in the world, The Floating Office Rotterdam (FOR), in which we designed the floating foundations (FOR), in which we designed the floating foundations and were the lead engineer of the project," added Jelle.

We asked Jelle what are the benefits of choosing their company for a floating building and he answered, "We are engineering and floating building/structure experts, and have been developing floating techniques



since 2004. We have extensive experience with a diverse and competent team, handling the nautical aspects (stability of these structures, calculating drift forces from waves, current and wind, etc), engineering access bridges, mooring facilities, and the buildings itself. We do this all over the world and have engineered everything from floating parks to houses, hotels, ferry terminals, and much more."



Another sizeable construction project that Bartels & Vedder BV developed and designed the floating structures and buildings for was in Schoonschip, Amsterdam which was a project that span across four years from 2016-2020. The brief was to create a large scale floating residential area that existed of all floating villas arising in the Johan van Hasseltkanaal, a branch of the IJ-canal in Amsterdam. The floating 'district' called Schoonschip is now marked as one of the most sustainable floating housing projects in Europe and comprises of a total of 30 houses, 46 households and over 100 residents.

Bartels & Vedder BV involvement included the engineering of the floating foundations/cellars of 16 houses, the engineering of the mooring piles and construction of the houses, the engineering of the structural design of the houses, delivering the expertise to determine and engineer the stability



and draught (depth) of the houses, to design and develop the structural drawings for building permit applications, create conceptual structural drawings for the construction of the houses, create 3D BIM structural models of four houses, as well as develop shopdrawings.

Of course, it is clear to see that Bartels & Vedder BV offer an extensive end-to-end service that comes completely unrivalled in the current market. Whether you're needing structural calculations, 3DBIM drawings, structural advice, monitoring and guidance, or just general structural advice, Bartels & Vedder BV can help.

For more information, please visit:
T +31 6 422 398 53
info@bartelsvedder.nl
www.bartelsvedder.nl



Find your perfect platform

Building & Construction Review is proud to present Independent Access Sales with our Commitment to Excellence Award.

IAS's incredible growth strategy since it was established in 2020 has enabled them to unlock new partnerships and reach new audiences, scaling up even faster than they could have ever thought possible. With 35 years of experience in the access industry, Richard Martin – current Managing Director and Owner, and his small but vital three-member team who also have an abundance of experience within the access industry, have already smashed their initial five-year targets as it fast becomes a future ready company demanding speed, efficiency and value in all areas of its service.

With a sole mission to find the perfect access platform for your needs that also comes at the best price achievable, IAS have a number of services available for all customers. Richard explains, "Our main service is that we sell certain manufacturers



platforms that include Easylift Spider Platforms, SOCAGE Truck Mounting Platforms, and the Leonardo HD which is a compact, versatile and lightweight mobile platform by Bravi HD."

"Further to this, we also do consultancy and servicing for our customers. We are reliable, honest and ultimately look after our client's needs. Our back up service is very professional and second to none."

Whether you're a homeowner, contractor, business owner, or work within an area of building and construction, IAS work to find the best and most reliable access platform for your project. To support this, they also provide a maintenance service to



ensure your access platform is always in top working condition. "Customers who may have an access issue can call us and we will either work with them to solve their problem or point them in the right direction to solve their access needs. Our team and I have over 35 years' experience in the access industry so I would like to think we really understand the industry and what our customers need. We are the ultimate professionals and will use our expertise and



experience to ensure only positive outcomes. We are approachable, reliable, and honest, and because we are a small company we work really well with people and give them our upmost attention backed up by an incredible aftersales service that we are proud of," stated Richard.

Starting from nothing, it is completely commendable to witness what Richard and his team have achieved in such a short period of time. "We started from nothing to being a distributor where we have sold over £2 million worth of Spider machines in the last two and a half years. One million pounds of which was sold to just one individual client, so we are trying to grow the brand as organically as I can and as long as I can keep selling this way the skies the limit for us. The growth of the business from standing start to where we are now is phenomenal and I'm very



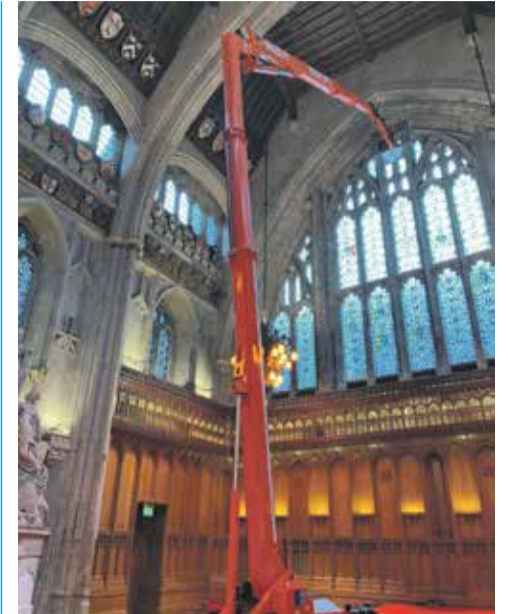
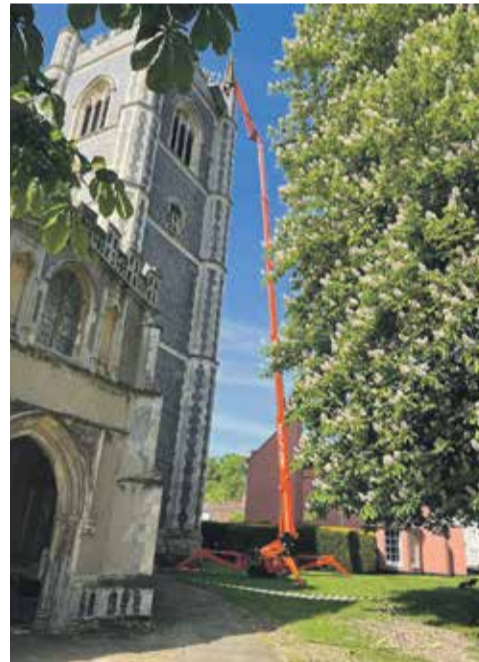
proud but keen to continue selling Spiders and other equipment," added Richard.

Recently, IAS took on the sale of SOCAGE trucks selling its first one in March 2023 with another eight trucks coming in soon. "We are also really excited to announce that we will be adding some more lines and brands to our current stock in the very near future that will add some more strings to our bow," said Richard.

Moving forward IAS will continue to grow organically and employ more people along the journey. "To support our future expansion we will be looking to hire more staff who will help us reach new markets and bigger audiences. Our main goal is to increase product awareness and we can only do this through hiring more people to join our sales team," added Richard.

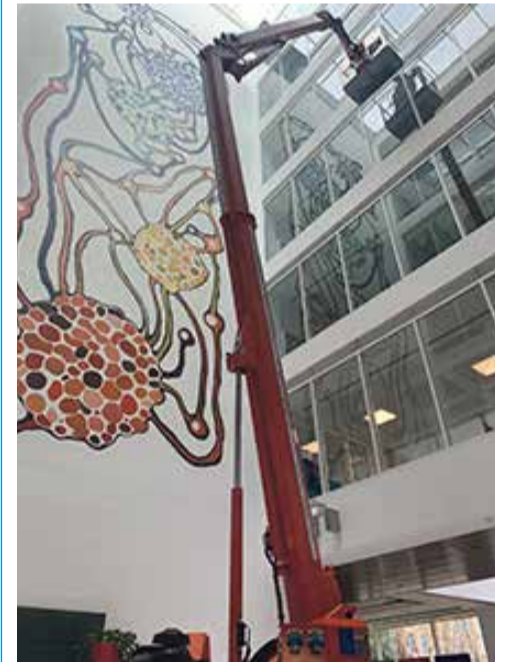
In closing, we asked Richard what does a commitment to excellence mean to the company and how does he feel they achieve this.

"Over the years, we have built up a good brand awareness so people are aware of us and know us



well enough to have a strong confidence in buying from us. When a company comes back to us to buy a second or third machine, we know we are doing something right. We have many customers that are repeat purchasers and that shows they trust us. We pride ourselves on building a strong rapport with our clients and we ensure to do our upmost to look after them and be as professional as we can be. Our team will go above and beyond to meet all customers' needs and we are rewarded by their returned custom."

For more information, please see below:
T 07483 246878
enquiries@iasales.co.uk
www.iasales.co.uk



High-quality service sealing systems



Service Sealing Solutions Ltd

In this issue, the winner of our Building & Construction Review Recommends Award goes to Service Sealing Solutions for its continuous efforts in providing high-quality service duct sealing systems and watertight seals for utility services.

Service Sealing Solutions Ltd provide a number of different sealing solutions across the UK to both the public and private sectors. As the sole UK distributor for the sealing industry's top manufacturers; DOYMA and HKD, Service Sealing Solutions Ltd specialises in high-quality service duct sealing systems for utility services and watertight seals.

Based out of Shropshire, Service Sealing Solutions Ltd has a UK wide customer base and works hard to distribute a high number of different products. Marked not just a distributor, the company also covers every aspect of a project, required by the contractor. Tina continued, "When you are planning a build, it is easy to forget the little details that make sure your building stands the test of time. Correct sealing can help keep the building's utilities accessible, making any maintenance easier to complete with little disruption. Service sealing systems also prevent structural damage because wherever service ducts are installed through walls, ceilings or floors, penetrating water may cause damage to buildings."

Service Sealing Solutions Ltd has the exclusive rights to distribute DOYMA products in the UK. DOYMA stands on the front line when it comes to the development of innovative, practical solutions for sealing and fire systems. Demanding building types, such as power plants, large industrial plants, reservoirs or airports, often require highly specialised custom-made constructions. They place high demands on the fact that building penetrations such as cables and pipe work need to be permanently sealed. In the case of extraordinary pipe dimensions or special thermal, chemical or physical requirements, sealing systems in the



Tina McAra, Company Director of Service Sealing Solutions Ltd holding the BCR Recommends Award

form of a special construction are the required solution.

Service Sealing Solutions Ltd has a large range of DOYMA products that come with a 25-year warranty. DOYMA product brochures are available on the website and include products that have been supplied to some of the UK's largest projects.

Tina commented, "We provide DOYMA's products mostly to builders of commercial properties and we have provided for many of the large projects in London including HS2 and Kings Cross. Quite often services and electricians are installed underground and therefore have to have guaranteed water tightness."

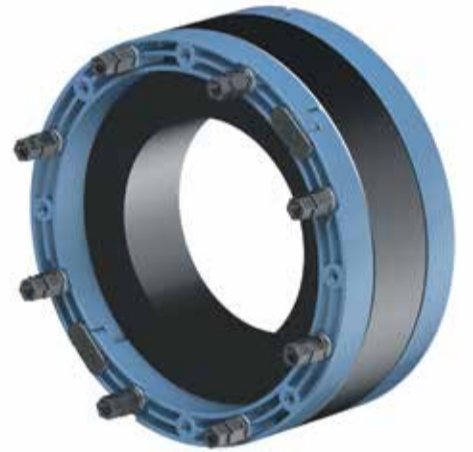
DOYMA has recently released its new generation Curaflex Nova® gaskets, which are the perfect solution for any professional tradesman instantly looking to solve sealing problems and can be adapted to multiple applications. The Curaflex Nova® gasket inserts are the safe solution for the sealing of all common services and are suitable against pressing and non-pressing water, and this is because the unique ITL principle (Integrated Torque Limiter) always guarantees the correct torque when the gasket inserts are tightened. All Curaflex Nova® frame rings are made of a



special non-conductive high-performance plastic which prevents electrochemical corrosion. Optimal contact pressure is achieved by using extremely slip-resistant and highly aging-resistant EPDM elastomer between the frame ring type.

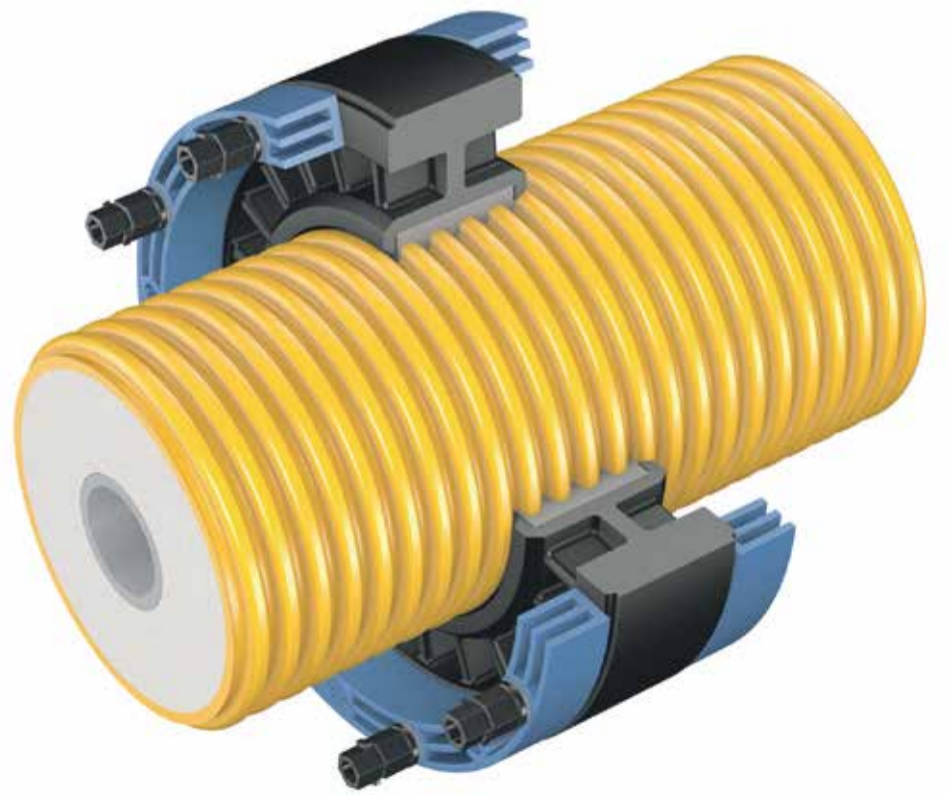
Service Sealing Solutions also supplies HKD products, which are now owned by DOYMA. HKD manufacture a large range of pipe sealing systems and service conduits that are guaranteed to withstand up to four bars pressure. HKD systems have a sealing solution for service conduits cast into concrete without the sleeves. They are supplied and ready to use, requiring no site preparation work prior to installation. With options such as KE Socketless service conduits, KG Wall Ducts and Floor Ducts, together with KG Twin Sockets for installation in pump sumps, HKD products are ideal for situations where suitability for thin-walled concrete structures is vital.

The company holds an unprecedented high level of expertise to developers and specifiers for sealing against water and gas ingress around service entries in basements and high-rise



buildings. With a wide pipe gasket selection all with different specialities, including ones which can withhold high temperature, you can be sure that Service Sealing Solutions have what you are looking for.

For more information, please see below:
T 01952 510050
www.servicesealingsolutions.co.uk



Putting the craft in craftsmanship



In this issue, we've chosen to recommend Bluerun not only for its unbeatable capabilities of quality craftsmanship but also for its ability to manufacture bespoke joinery with unbelievable levels of quality and care without the use or aid of CAD or CNC.

For over three decades, Bluerun has been at the forefront of construction industry manufacturing quality, bespoke joinery to the domestic and commercial markets. The company was initially established by John Jones, who is the current MD and Peter Clayden, but when Peter resigned in 2008 John, his wife Doreen and son Jeremy took over as sole owners. As a family they each bring their own expertise to the team, and to enable John to semi-retire in December 2019 his daughter, Dee Newman joined the team as Finance Director to help oversee the day-to-day running of the company as well as manage the accounts, payroll, quotations and managerial duties.

Overcoming the COVID-19 pandemic showed the true mark of how resilient the company and the people behind it really is. Finding the strength to battle against the odds and to persevere in the face of current stress only made Bluerun stronger.



Today, Bluerun is thriving in the current market. Upon reopening its doors in May 2020 the company has gone from strength to strength. Work flow has increased, and its reliable, successful and trusted brand is now known as one of the best in the joinery industry. So much so, this triumphant comeback has attracted big name brands such as Starbucks and Waitrose who are current clients of the company.

2022 was a great year for the company in terms of revenue and new business. It has managed to maintain a strong conversion rate despite the current



Dee Newman, Finance Director at Bluerun Ltd presented the BCR Recommends Award

economic crisis and has found that enquiries for larger jobs as opposed to 'single window' types of jobs has been more popular especially from domestic clients mimicking that of its regular commercial clients.

Bluerun has the capabilities to manufacture most things from timber, hardwood, softwood, panels and sheet material. Some common items the company can manufacture for the domestic building market include windows, doors (exterior and interior), bi-folding doors, staircases, bespoke storage units and wardrobes, all of which come with the option of being sprayed in primer or to a finish.

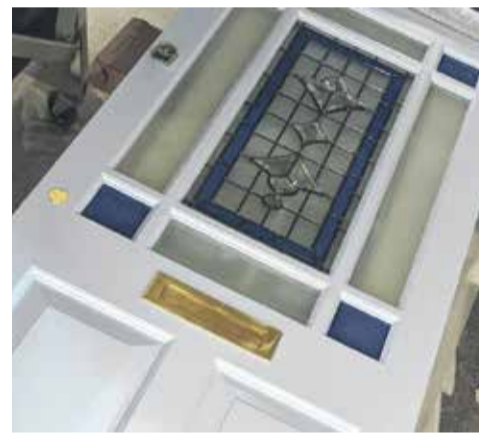


Alternatively, if you're looking for items made from both hard and softwood or even veneered and painted panels, Bluerun can reproduce an array of items including replacement sashes, where it can manufacture a brand new one on a like for like basis, so the mouldings will match. "Similarly, if a domestic client has found an image of a door, for example, that they would like us to reproduce, we can usually do that. Recently we have started using a glass supplier that can supply us with stained glass effect units, complete with leading that has been aged



and soldered, which looks absolutely breath-taking," added Dee.

As mentioned above, Bluerun is unique in its approach to manufacturing as it has never used computer aided machinery for any designs. Dee mentioned, "All our products are crafted to perfection and finished by hand. Drawings are prepared with pencil and paper and everything that is manufactured by our team has been done so with the utmost attention to detail. We also have the ability to obtain colour matches of any paint colours for clients that would prefer something sprayed to a finish."



Only producing purpose made joinery to client's drawings and specifications, Bluerun's unrivalled level of customer service means that free quotations are normally provided within 2-3 days or less enabling the company to usually deliver a quick turnaround of any manufactured items required. Furthermore, because it has an experienced spray operative in charge of a modern spray paint and lacquer facility, articles can leave the factory in a fully finished state, ready for installation on site.

Aside from needing the item to fit out its workshop doors upon completion, there is no limit to any project that Bluerun will endeavour to take on. Inspired by a challenge, Bluerun will do its utmost to cater to all enquiries. "We can always find a solution. Staircases for example, would be made in a kit format, for ease of delivery and installation, and we use couriers for deliveries who have access to all sizes of vans and lorries," said Dee.

T 01799 599995
dee@bluerunltd.co.uk
www.bluerunltd.co.uk



Keep your property and possessions safe and secure



It sadly remains the case that theft and break-ins to property remains all too frequent and a key issue for all.

If anything, the stats show that, in some areas, crime rates have materially increased in the last couple of years. Residential properties and business addresses remaining frequent targets.

The growth around second homes, including lodges, park homes and caravans, has influenced these rates. There are also reports that a downside to the rise in staycationing has also been an increase in crime statistics.

The impacts here go beyond the obvious distress caused to financial losses, as well as reputational damage for businesses as well as the increasing costs of insurance faced by all parts of the chain.

As a result, property owners and occupiers are taking steps to combat theft and damage by making it harder for theft or damage to occur.

Specialist security businesses are also leading the fight.

One such business is Securian Industries. Securian designs and manufactures a range of easy to use door security devices. This is not the usual locks and chains. No, Securian's products are discrete door handle bars and door stops that keep a door protected whilst also being fast to install, fast to deploy and stylish.

Greg Allsopp, a director at Securian Industries explains more. "The business as a whole grew out of the rising rates of theft and criminal damage seen in the midst of 2020's lockdown. Properties of our own were affected too. We therefore set out to provide a range of cost-effective and simple products that help to mitigate these risks. All of our products have been designed to be installed in minutes, deployed to work in seconds and not require padlocks or keys that can be easily lost or can be difficult for some to use. It was also important that our products were attractive – there are plenty of industrial looking solutions out there but these do not necessarily fit with the decorative or lifestyle looks our customers are aiming for. Our products are therefore discrete, stylish as well as working beautifully too."

The range includes double/patio and single door bars that lock in place to prevent handles and locks being broken, and slide or drop in place door stops that can withstand significant forces to deter even a determined burglar.

Mr Allsopp commented, "Our products are being bought by home owners, business occupiers, leisure providers, care home operators and schools amongst a wider range of sectors. This just goes to show that keeping our property and possessions safe is an issue for everybody. Along with our stockists and distributors, we are pleased to be able to give customers a cheap and effective route to mitigating the risks from theft and break-in."

Securian Industries reports that it's actively seeking stocklists and distributors around the UK and Ireland with a network of stockists growing all the time and with increasing numbers of its products available for customers.

Contact
T 0330 333 7279
info@securian.store
www.securian.store

Tool hire specialist for air and hydraulic tools

APP Site Services are a leading distributor of site supplies and services to the construction industry. One of our main focuses of the business is our hire and sales department for construction tools.

We specialise in Rebar Cutters, Rebar Benders, Hydraulic Splitters, and Pneumatic Picks.

APP Site Services is part of the APP Group, most tools can be shipped next day and be hired for various lengths of time. Call or visit our website today.

For more information, please see below:
T 01909 519519
info@appsiteservices.co.uk
www.appsiteservices.co.uk

Here at APP Site Services, we provide an excellent service, not only with the range of products but with the level of care each order is given and the speed with which we can deliver.

We have a range of tools and associated products available to hire.



GARDENROOMSSUSSEX

Garden Building & Garden Pods
Contemporary bespoke designs to make the most of your outdoor needs.

07495308444
01273033288
info@gardenofficerooms.co.uk
www.gardenofficerooms.co.uk

Lanes Group plc

NATIONAL COVERAGE LOCAL SERVICE

Total Drainage Solutions

SERVICES

- Blockage Removal & Cleaning
- HADDMS
- CCTV Surveying
- Manhole Scanning
- Lining & Patch Repairs
- Vacuumation & Tankering
- Excavation & Repairs

Recycler jet vacs - more sustainable & productive

Fully Qualified Workforce

- CSCS
- Safety Critical Medicals
- National Highways Passports

0800 526 488 | sales@lanesgroup.co.uk | www.lanesfordrains.co.uk

SECURIAN
ORIGINAL ASSET ARMOUR

KEEP YOUR PROPERTY AND POSSESSIONS SAFE AND SECURE

- KEYLESS SECURITY
- EASY INSTALL
- IMPACT TESTED
- PROTECT YOUR PROPERTY
- BURGLAR PREVENTION

MX-3 DUAL POSITION DOOR JAMMER
PX-4 SINGLE HANDLE FRENCH DOOR BAR LOCK
MX-1 DOOR JAMMER
PX-3 FRENCH DOOR BAR LOCK
MX-2 PIN DOOR JAMMER

SEE OUR FULL RANGE AT:
WWW.SECURIAN.STORE
INFO@SECURIAN.STORE
0330 3337279

Adveco FUSION: The next generation of Packaged Low-Carbon Electric Water Heating

Commercial hot water specialist Adveco announces the arrival of the next generation of FUSION electric water heating for commercial projects. FUSION-E is a tough, high-efficiency electric water heater. FUSION-T extends the system with the addition of a system-integrated heat pump and advanced controls. Both ranges can be further expanded with the addition of an electric immersion for greater resilience (FUSION-Eplus and FUSION-Tplus).

Bill Sinclair, technical director, Adveco says, "For commercial organisations seeking a hot water system for new buildings faced with the regulatory changes on new gas connections or planning to move from existing gas-fired systems to electrical alternatives, FUSION provides an



impressive range of choices. It is the perfect response for projects with small to medium basin and sink-led hot water demands whether cost, sustainability or business security are the driving factors for specification."

FUSION starts with all new specially designed single- (ATSI) or twin-coil (ATST) corrosion-resistant stainless steel high-pressure indirect cylinders. Offering capacities from 200 to 500 litres, the cylinders feature dedicated mounting points for Adveco's ARDENT electric boiler making FUSION a more compact, space-saving option. Supplied with pre-built pipework the latest generation of FUSION is now faster and easier to install.

The electric boiler, with multiple automatically balanced immersions, delivers prolonged system life and immediate resilience for the boiler. Used in a sealed 'primary' loop, the electric boiler heats the same water continuously effectively



eliminating limescale issues typically found in hard water areas.

For the FUSION-T renewable variants, the monobloc air-to-water FPI-32 heat pump (ASHP) is used as a source for system preheat. Contribution from the ASHP is maximised via the bespoke FUSION Control Box. These controls smartly balance the two heat sources, meaning the electric boiler is not required to work as hard to raise flow temperatures to the required 65°C. Electrical demand on the boiler is reduced by as much as 30%, delivering operational savings and reducing carbon emissions by up to 71%.

Where hot water demands become a business-critical service, FUSION systems can also incorporate an additional backup immersion (FUSION-Eplus & FUSION-Tplus) for enhanced resiliency. Controls are further extended to incorporate SMS output to advise building



managers of a fault scenario and automated engagement of the immersion backup to guarantee business-critical hot water supply.

T 01252 551540
enquiries@adveco.co
<https://adveco.co>



Is your home future proof? Are you concerned about increased energy prices? Are you worried about your home's carbon emissions?

Heliomotion dual axis solar tracking systems can be installed in 1-2 days or over a weekend, and can be re-located when moving premises/home if necessary. Suitable

for rapid deployment in disaster relief areas.

Heliomotion is Build It Magazine's best sustainable technology award winner 2022,

and a British Renewable Energy Innovation Award finalist June 2023. Designed in Finland and manufactured in the UK, the systems are made from top grade steel and aluminium.



3 different sizes available

- Complete solar energy solution shipped sustainably
- Straightforward installation with illustrated assembly guide
- Produce your own electricity and reduce your power bill
- 30-50% more energy generated compared to static panels
- Premium quality and elegant design

Contact us
033 3303 4366
www.beesolartech.co.uk
sales@beesolartech.co.uk

Unlike roof based solar PV installation, solar trackers follow the sun from sunrise to sunset, turning and tilting throughout the day. Because of this they generate around 45% more electricity than a static ground or roof mounted solar array.

They are ground mounted using either a custom steel plate and ground anchors, or a concrete plinth. Ground anchors are a far more eco-friendly solution and can be installed in less than an hour. There are three different system sizes, with two colour options and they can be used singly or in multiples, either on or off grid. Install in an unshaded area of your commercial premises/car park/domestic garden and watch those energy bills decrease.

Benefits:

- ▲ Complete solar energy solution
- ▲ Straightforward installation
- ▲ Produce your own electricity
- ▲ Premium quality

You can talk to the Bee Solar Tech team about installing single/multiple systems, solar panels, inverters and battery storage requirements.

To find out more about our solar solutions, please visit:
T +44 (0)3333 034366
www.beesolartech.co.uk

Lanes wins 5th Skills Accord for workforce development success

Water utilities and drainage specialist, Lanes Group plc has won a Procurement Skills Accord for the fifth year in a row.

The training and skills development accolade has been presented by the Energy & Utilities Skills Partnership.

The company was one of 37 utility service suppliers to achieve Skills Accord status in 2023, out of 47 companies that are signatories to the programme.

The accords were presented at a Best Practice and Awards event that was held in Birmingham on Wednesday 24th May 2023.



The Procurement Skills Accord (PSA) is a national initiative that encourages increased investment in targeted training and skills across the energy and utilities supply chain.

Lanes Utilities, which last year won an eight-year extension to its contract as the sole wastewater network services maintenance partner for Thames Water, submitted detailed evidence about its workforce development programme and performance.

This was assessed against the accord criteria, which includes: initiatives to address skills gaps; skills development in the supply chain; and demonstration of continuous improvement in skills development.

The Energy & Utilities Skills Partnership was impressed with the way Lanes gathers data about women and people from ethnic

minorities to ensure fair access to skills training, its active promotion of opportunities through jobs fairs in schools and colleges, partnership working with the prison service, and an 'excellent' continuous improvement plan.

It is forecast that 221,000 skilled jobs will need to be filled across the energy and utility industries by 2027, with 100,000 people set to retire by then, 90,000 people moving to new jobs and 31,000 new jobs created.

Contact
T 0800 526488
sales@lanesgroup.co.uk
www.lanesfordrains.co.uk

Lanes drainage engineers gunning for safer water jetting

Drainage engineers at Lanes Group plc are among the first operatives to undergo new training designed to develop essential knowledge and skills for when using water jetting for surface cleaning.



The Drain, Sewer and Surface Preparation up to 275 Bar practical module, or DSP for short, developed by the Water Jetting Association (WJA), includes new instruction on surface preparation.

This course is designed to develop skills that discourage the use of washdown nozzles attached to jetting hoses. These have no mechanism for instantly shutting off the water supply in an emergency.

Safer water jetting

Lanes Group Training Manager, Darren Hamilton, has been putting new drainage engineers at Lanes through the course, which combines class and practical learning to enhance productivity and safety.

He said, "Drainage engineers often use water jetting to clean contaminated surfaces, for example to deal with sewage spills, or clean access chambers and open channels.

"We want to eradicate the use of washdown nozzles for these tasks. Water jets from guns is safer. It can be instantly stopped by releasing the trigger. This provides a built-in safety mechanism to control water delivery.

"Lanes aims to set the highest possible standards. By delivering this DSP practical module, we are aligning our training and procedures with the latest WJA red code of practice for drain and sewer cleaning, which incorporates this new thinking on surface preparation."

Early adopter

All drainage operatives at Lanes, which is a member of the WJA, undergo WJA water jetting training before they are permitted to use water jetting equipment.

To achieve WJA certification, they must pass a Safety Awareness class-based course and at least one of five practical modules, of which the DSP course is the latest one.

Darren Hamilton is a WJA approved instructor. Until recently, he was also the WJA's training and safety chairman, so played a key role in developing the new DSP practical module.

Surprised by power

The DSP module has two practical assessments: water jetting in drains and sewer pipes; and jetting for surface preparation up to 275 bar (4,000 psi) and water flow rates up to 73 litres per minute (lpm), within a maximum reaction force of 250 Newtons.

The pressure limit is set because drainage operatives commonly use lower pressures for washdown activities.

Topics covered include safe use of jetting equipment, water jetting techniques, jetting gun and nozzle types, risk assessment, use of protective clothing and equipment, site set-up, and emergency first aid.

T 0800 526488
sales@lanesgroup.co.uk
www.lanesfordrains.co.uk

BESPOKE STRUCTURES, COLUMNS AND CASTINGS ARE A SPECIALITY!







TOP QUALITY & EXCEPTIONAL SERVICE FOR OVER 140 YEARS...

Manufacturers and designers of high quality fingerpost signs, bandstands/gazebos (restoration & new), canopies, balconies, signage, plaques, street furniture and much more. Our restoration consultancy is regularly used by local authorities and other bodies looking for advice and assistance - particularly with bandstands, railings and park features.

- Bandstands, Balconies, Verandas, Canopies, etc.
- Bronze & Aluminium Plaques
- Wayfinding Solutions
- Bespoke Signage
- Restoration Work
- Architectural Castings
- Custom Columns & Spandrels
- Blacksmithing & Fabrication Services






01298 814941
sales@leanderuk.com
www.leanderuk.com



Manufacturers of Fine Structures and Signage Solutions

Leander Architectural, Fletcher Foundry, Hallsteads Close, Dove Holes, Buxton, Derbyshire. SK17 8BP

Air conditioning and heating solutions

Clima-Tech was founded in 2015 by Ashley Shemmings, a self-employed specialist in heating engineering with over 18 years' experience in the engineering industry. Clima-Tech is a family run business and alongside Ashley, wife Franki Shemmings works in the office. What started off as a maintenance and servicing company, soon evolved into a specialist multi-faceted service with a proven track record in the electrical, refrigeration, domestic, and commercial sectors.

Clima-Tech is well trusted and well established in the renewable energy field. Clima-Tech is hands on and works closely with its clients to ensure that the best service is delivered. Clima-Tech is an approved contractor by the following certified bodies: Microgeneration Certification Scheme (MCS), Renewable Energy Consumer Code (RECC), IWA, and REFCOM. Furthermore, Ashley has trained to the highest level, holding qualifications such as City and

guilds 2360 NICEIC certified, City and guilds F-GAS, B-PEC G3 unvented, B-PEC Heat pump design, and B-PEC water regulation.

Clima-Tech has been the receiver of many awards over the years receiving first, second and third place in the following: 2019 National Energy Efficiency Awards, Energy Efficiency Champion and Commend Renewable Heat Installer & Contractor 2020/21 and the National Energy Efficiency Awards 2020/21. Another milestone for the company was in 2021 when Clima-Tech employed its first member of staff.

Clima-Tech specialise in a range of core services in the renewable energy field for MCS/RHI registration systems, Heat pumps, Heating systems, Electrical system design and installation, System commissioning, Air conditioning,

Solar panel specification, design, installation, repair and maintenance, and Underfloor Heating and Plumbing works.

We now have a showroom open in Martlesham. We want to help more households experience the benefits that heat pumps can bring – and to encourage early adopters to make the move. Our showroom will share information about all the advantages of heat pumps, while busting myths about barriers to adoption. Our showroom has a working heat pump in place to demonstrate the technology in action, alongside everything that goes with them, including cylinders and controls.

Contact
T 01473 798321
ashley@clima-techservices.co.uk
www.clima-techservices.co.uk



SUPPLIER OF CONSTRUCTION HOISTS AND MAST CLIMBERS

DIRECT HOIST

NOW OFFERING TRAINING COURSES NVQ LEVEL 2 IN HOIST INSTALLATION

GEDA UK DISTRIBUTOR **Electroelsa**

DIRECTHOIST.CO.UK
 HIRE SALES SERVICING PARTS REPAIRS

brightideas
 consulting & development

CONSULTANCY FOR HOUSING DEVELOPMENTS

Bright Ideas is delighted to announce the successful completion of the Boho Village scheme in central Middlesbrough. Working with Middlesbrough Development Company, we have successfully designed, built and sold 61 new energy efficient and low carbon homes in very challenging times.

Thank you to our Construction team and customers for making this such a success.

www.brightideasdevelopment.co.uk
 Telephone 07714 412689
 Email info@brightideasdevelopment.co.uk

The UK's leading wastewater monitoring and treatment experts

Initially developed by Smart Storm for the Thames Tideway project, The NeutraliZer™ is a unique, mobile, in-line treatment plant that uses only CO₂ to continuously neutralise concrete washout water.



The concrete wash water issue

The pH of concrete wash water from construction and building sites is highly caustic (pH 12-14) and very damaging to the environment if untreated. It is illegal to discharge without an acceptable pH level (usually 6-9).

Equally, this applies to concrete wagon washouts to sewer and surface drains, where usually illegal to discharge below pH 6 and above pH 10.

This high alkaline wastewater is customarily treated with hazardous chemicals on a batch basis.

NeutraliZer™ CO₂ concrete washout treatment

The NeutraliZer™ works by monitoring the caustic washout with Smart Storm's USM pH meter and based on the readings, carbon dioxide (CO₂) is automatically dissolved into the wash water flow to reduce the pH to a safe level for discharge; this happens on a continuous flow basis.

Smart Storm's USI, a multiple water parameter meter, provides a 7" touch screen interface for user-friendly operation. A Magflow flow meter monitors the effluent leaving the unit, which can treat up to 25m³ of wastewater per hour.

CO₂ dissolved in water is slightly acidic so is ideal for neutralising concrete wash water and CO₂ self-buffers so cannot overdose no matter how much is injected.

Key features:

- ▲ Continuous processing system with advanced in-line mixer
- ▲ Skid-mounted and highly mobile – small footprint
- ▲ No need for hazardous chemicals or batch treatment
- ▲ Fully automated with alarm beacons (pH/out of gas)
- ▲ Rugged construction
- ▲ Plug and Go
- ▲ In-built storage for 8 gas bottles
- ▲ Integral flowmeter
- ▲ Remote Cloud-based monitoring.

Available to purchase or hire; contact Smart Storm Ltd to find out more:

T +44 (0)1422 363462
enquiries@smartstormgroup.com
www.smartstormgroup.com
https://twitter.com/smart_storm

In-Line pH Balancing For Concrete Washout Water!

Mobile Skid

Fully Automated

Continuous In-line Process

Low Operating Costs

Rugged Construction

Small Footprint

No Hazardous Chemicals

Plug & Go

For Hire or to Buy



Smart Storm's Unique pH Balancing Unit!

Treats and Balances Highly Caustic Wastewater In-Line.
 No Hazardous Chemicals,
Just CO₂!



Smart Storm Wastewater Solutions

T: + 44 (0) 1422 363462 www.smartstormgroup.com Enquiries@smartstormgroup.com



LEADERS IN OUR FIELD

Consulting on various aspects of project design, constructability and operational lifecycle matters for local and global commercial clients.



DCON Safety Consultants awarded Excellence in Business Award - Safety Specialists by The Public Sector Magazine 2023 as well as Excellence in Health & Safety in the Fit Out Awards 2022.



DCON Safety Consultants
Suite 5, Fitzwilliam Square East, Dublin 2
Email info@dconsafety.com
Phone +353 (0)1 611 1556
www.dconsafety.com

Collaboration and partnerships key to DCON's Recommendation BCR award 2023



After seven years in business, DCON Safety Consultants successfully claim another industry recommendation award. Returning recently to the winner's podium by receiving the prestigious Guinness Excellence in Business Award for 2023 having already claimed the matching award in 2022 and 2021, Founder and Managing Director, Diarmuid Condon instantly deflected praise to his clients and industry partners where he modestly admits it would not have been possible without the invaluable input of an extensive network of partners.

"We are humbled to have been chosen as the BCR Recommended Consultants for 2023 but the reality simply is, is that we wouldn't have received this award without our clients, their design teams & project managers, and our consultant partners that we work closely with on a day-to-day basis prioritising health, safety and wellbeing. It's imperative that we acknowledge all project parties as it's ultimately a collaborative effort."

Diarmuid goes on to further remark "We advise and offer guidance on design, planning, procurement, construction and operational outcomes. Outcomes are only attained from buy-ins from our clients. This relationship and rapport extend to our delivery partners – i.e., Main Contractors – who also have to be highly commended. Our service pool is extensive, and



it is important to acknowledge everybody involved. Their contribution and hard work allow us to continue with our principal service offering and to extend and expand upon it. Our clients have been very much affected by the pandemic and have had to significantly alter their site practices and manage the challenges presented. This has impacted their resources and these are the real winners of this award. We could not collect or promote this award without our partners."

As proven leaders in built environmental, health & safety and wellbeing consultancy matters, consulting on various aspects of project design, constructability and operational lifecycle matters for local and global multisector clients, DCON Safety Consultants prioritise and specialise to the highest levels of informed and intelligent advice, senior project resource allocation and compliance assurance. Acutely cognisant of the fact that every project with potential benefits also has potential risks – and with the art of planning centring on the coordination of these two zones of uncertainty – their team of highly-experienced construction



professionals consistently prioritises and safeguards each client's best interests and statutory conformity.

The skills, knowledge and experience of DCON's staff places them at the forefront of their profession; their unique approach to the services provided is focused heavily on assisting clients in demonstrating confidence to their levels of compliance whilst also exploring how they might improve their safety performance.

With the safety and wellbeing of their own people, their client's staff and those around them is at the heart of the business. DCON Safety Consultants are passionate and highly committed to continually improving health, safety and wellbeing management



in collaboration with clients. They have accumulated extensive experience in the provision of specific health and safety advisory services on large, complex projects and public and private developments.

DCON Safety Consultants serve a wide and varied selection of customers including Public Sector Departments, Corporate Owners, Real Estate Developers, Main Contractors, Design Professionals and Infrastructural Bodies. No project is considered too simple or complex for their team of high-quality specialist consultants and construction professionals boasting an average of 20+ years' experience working in the built environment.



Principal services provided by DCON Safety Consultants includes that of a Project Supervisor for the Design Process (CDM Advisor Plus), Pre-Planning Compliance, Safe Design Adherence, Health & Safety Strategy Creation, Client Advisory Roles, Physical Site Safety Auditing and Expert Witness. Through these services, they support and influence the design of proven health, safety and wellbeing strategies that seek to help clients achieve high-quality, cost-effective work for the safe design, construction and operation of their assets.



While Diarmuid's track record in designing and executing strategic safety plans and systems for construction projects in Ireland and the UK is exceptional, his comprehensive background as a construction professional has been key to taking DCON Safety Consultants to where they are today. "We are construction-qualified specialists, and we are there when it is difficult, not just when it is easy," he promises. "We understand both safety design and the



mechanics of construction methodology. Our primary qualifications are in construction and that is hugely important."

"While we provide safety services, you also need to understand how things get constructed and deconstructed. There's value in that and it is earned. We understand that value and we are always open to learning and strive to excel in new technologies, be that lean construction, alternative design lay-outs or BIM developments."

With the Recommendation Award proudly on display, Diarmuid commented, "It is deeply humbling but at the same time I wouldn't have accepted the award if I felt we didn't deserve it. This is a moment in time, and it doesn't define us. It alludes to our performance within a particular timeframe, but we intend to continue delivering for our clients and hopefully that may lead to us to be considered for other similar like awards in the near future."

For more information, please see below:
T +353 1 611 1556
M +353 86 047 4289
diarmuid.condon@dconsafety.com
www.dconsafety.com



LeeSan provides the perfect Sanitation Systems for 28 new Floating Homes at Upton Lake



Upton Marina, Upton Upon Severn, (now called the Upton Lake Project) is the location for this exciting new development. Ten floating homes are currently planned. This will be expanded to feature twenty-eight in total in three further segments. The project has been underway since the start of 2022.

Obviously, floating homes come with some technical challenges. In this case, one of these was working out how to allow them all to discharge black and grey waste to the main foul sewer located some distance away on the far side of the marina.

However, for Warwickshire based Marine Sanitation specialists LeeSan this sort of project is all in a day's work. Working closely with the developers, the LeeSan team have designed and specified a custom built, integral, HDPE (High Density Polyethylene), transfer tank with single submersible pump (supplied by LeeSan's parent company Pump Technology Ltd.) for each home. All pipework from the home's grey and black waste discharges directly into this. A safety operating panel and high-level alarm to warn of any challenges in good time to take appropriate action is also included in every system.

These individual tanks then automatically pump out to a master transfer tank comprising of another larger HDPE tank with, for belt and braces security, twin 3 phase pumps (again from Pump Technology Ltd.), on a duty/standby/assist arrangement. This can easily cope with multiple homes discharging at once. From here, the system then discharges via the ramp and across the bridge to the main foul sewer.



For the client Tingdene Group an important part of the brief was that each system should operate just like a normal home, and this has been successfully achieved.

LeeSan has currently completed and commissioned the installations for the first five homes.

Tingdene Group have a show home in the marina, which they let out to potential clients interested in buying a home. This is proving to be a great idea as there is nothing like trying before you buy!

It certainly seems that LeeSan are expanding the concept of 'Marine' Sanitation into ever more interesting and exciting areas!

T 01295 770000
www.leesan.com



First class cleaning and waste management

Eventclean specialises in event cleaning and waste management. With over 25 years' experience, it has catered to some of the most high profile events in the country including the Rugby World Cup Fanzone in 2015, the UEFA Champions League Final in 2017 and the Volvo Ocean Race in 2018. It has also introduced waste sorting and recycling services to the National Eisteddfod in Cardiff Bay in 2018 and has been cleaning contractor for the RHS Flower Show for many years.

cleaning and waste management or quality toilet hire, you can rely on the team for the highest standards. Services include event cleaning and litter picking, waste management and disposal, waste recycling, portable toilet cleaning and attending, and the supply of compostable food packaging and cleaning products.

Contact
T 01443 844492
info@eventclean.co.uk
www.eventclean.co.uk



Whether you are looking for first class

First Class Cleaning for Your Event

Site Cleaning | Recycling
Toilet Hire & Servicing
Compostable Food Packaging

01443 844492
07841 120411
info@eventclean.co.uk
www.eventclean.co.uk

DYFED STEELS LTD.

The largest independent steel stockholder and processor in Wales and the South West of England.

- > Dyfed Steels is ISO 9001:2015 Quality Approved with over 30,000 tonnes of stock across the widest range anywhere in the UK, 10 branches throughout the region and a complete range of processing services.
- > We offer a personal, quality service that is unrivalled.
- > Dyfed Steels has continuously invested in the most sophisticated machinery to offer the complete range of processing services from the simplest individual cut bar to high volume sophisticated processing to the strictest of requirements.

Please visit our website to learn more and locate your nearest branch:
www.dyfedsteels.co.uk

Goland group | Home Improvements

info@goland.group
01908 702078
www.goland.group/homeimprovements

Goland Group Ltd, 15 Stadium Business Court, Lyon Rd, Bletchley, Milton Keynes MK1 1EX

With over 30 years of experience within the construction industry, Goland Group Ltd have the ability to deliver high end & top quality installations. We have completed & delivered high quality fit-outs on time, on programme & within budget for the designer retail market & the Museum Heritage sector over the past few years. We now want to bring that same ethos to the private sector by delivering home improvements no matter what the scale or budget, to a high quality and to a given programme fully compliant to Health & Safety rules & regulations, protecting the client & the tradesmen. We provide surveys & drawings right through to planning, to suit your style & requirements. We provide tried & tested trades that we trust to deliver top quality installations at competitive rates & on programme. No job is too small for us!

- Kitchen Installations • Bedroom Installations • Bathroom Installations • Living Room Installations
- Extensions & Lift Conversions • Complete Renovations • Bespoke Garden Offices With Full Services

Call us now for a free, no obligation quote!

The TP Group: The UK's leading multi-disciplinary contractors

Established in 1986, The TP Group has quickly grown to become one of the UK's leading multi-disciplinary contractors.

Based in Essex and operating across London, the Southeast and the Home Counties, our mission is to provide the highest quality of service possible to our clients, with a consultative approach and our 'can do' attitude.



With over 30 years' experience, our specialist teams will provide you with all the expertise your project needs and, above all, get the job done.

Over the decades, we have expanded our range of specialisms and set up dedicated divisions to reflect our expertise.

Whether you're looking for Painting Solutions, Passive Fire Protection, Surfacing & Coatings, Landscaping, or an integrated mix of services, our professional teams are always on hand to work with you on your projects.

Why choose us?

Our clients know we're not salespeople. We are experienced workers who have all started in junior positions and worked our way up, from the labourers to the Managing Director. We

know the length of time things take, the problems we need to overcome, what's achievable and what's not. And we'll always be honest with you.

The TPG ethos combines a common-sense approach with a 'can-do' attitude. We fully understand our clients' needs and service them in a way that fills them with confidence, often inspiring them to request other services from us.

We will always go the extra mile and, most importantly, get the job done to your complete satisfaction – no exceptions. This is our promise to you: Service Without Compromise.

Contact
 T 01277 841415
 info@thetpgroup.co.uk
 www.thetpgroup.co.uk



DESIGN CRAFTSMANSHIP EXCELLENCE

Hampton design and manufacture exquisite, bespoke hardwood doors. Every timber door is handcrafted in our workshop by a team of the finest architectural craftsmen, who combine expert technical knowledge along with a passion for the products they create.

T: 0330 311 0300 | hello@hamptondoors.co.uk
 Castle Chambers, 43 Castle Street, Liverpool, L2 9TL
 www.hamptondoors.co.uk

T: 01403 597590
 E: info@fire-dna.com
 www.fire-dna.com

FireDNA digitally monitors Fire Doors and Passive Fire Products



With the new Fire Safety Regulations having been in force for several months, Contractors, Fire Door Inspectors and Building Owners see the real benefit in using FireDNA

Post Grenfell, we saw an opportunity to introduce a new and innovative way of Monitoring Passive Fire Products in the built environment using the latest digital technologies.

FireDNA is an 'award winning' cloud-based Software and a Mobile App that has been developed for everyone involved in Passive Fire Product Manufacture, Installation, Inspection, Management and Maintenance. As well as for those that live and work within environments where Passive Fire Products are installed and are now required, under new legislation, to be digitally logged and monitored.

FireDNA delivers that digital 'golden thread' for all Passive Fire Products in the built environment from Fire Doors, Panels and Partitioning (including all intumescent seals, glazing and ironmongery), through to Fire Cables, Dampers and Ductwork.

FireDNA software catalogues Manufacturers product data, digitally shares it with Contractors and Installers, who in turn add their installation data, passing that onto Building Owners, Facilities Management Teams and Tenant Management Organisations.

That data can then be used by Building Control, Maintenance Teams, Fire Inspectors and viewed by Tenants and Residents alike, with a simple swipe of a mobile device.

FireDNA digitally links everyone in the chain of responsibility and creates a 'Golden Thread' of information across the full product lifecycle from cradle to grave.

To find out more about how FireDNA can assist you, or for more information about our products and services, please visit: www.fire-dna.com or call our team on: 01403 597590.



Fennell, Green & Bates

MINING ENGINEERS, SURVEYORS & ENVIRONMENTAL CONSULTANTS

For over 150 years, building companies and developers across Britain and Ireland have sought guidance from Fennell Green & Bates. FGB specialises in ground investigation, mineral extraction for the construction, energy and industrial sectors, mining law in relation to excavations below soil, structural surveys, contaminated land audits, coal mining risk assessments and topographical surveys.

The expert team can advise you on a feasibility study, including your land's ownership and any severed mineral rights that may affect the development.

Our Chartered Surveyors and Engineers can guide and advise on most aspects of development in relation to geotechnical and contamination issues.

Our dedicated department can coordinate other consultants to assess the impact of a construction project including traffic movements, noise, dust and drainage. We undertake soakaway tests, water level monitoring, sampling and examination of soils for a sustainable use of resources and to minimise pollution during the project.

Our engineers are familiar with assessing waste soils and stones on site and the re-use, recovery and recycling of such materials and can advise on the permits and methods of dealing with on site construction arisings.

Fennell, Green & Bates
 Old Joiner's Shop, 59 Oakenshaw Lane,
 Walton, Wakefield, West Yorkshire, WF2 6NJ

Tel: 01924 255666
 Mob: 07483164372
 Email: fennellgreenandbates@gmail.com

Shou Sugi Ban® Sustainable Cladding

Shou Sugi Ban® is a premium brand of charred timber cladding. It is specified when there can be no compromise on a building's aesthetic, practical and environmental credentials.

Using a traditional Japanese wood preservation technique, we transform sustainably-sourced timbers into charred cladding. This handcrafted process boosts the natural properties of the wood. The result is a weather resistant building material that adds a stunning finish to contemporary builds and heritage renovations.

Manufactured in our Buckinghamshire

workshop, Shou Sugi Ban® is shipped to residential, commercial and public projects across the UK.

- Our quality timber cladding range includes:
- ▲ Traditional textured blackened wood such as Yūkari Umi
 - ▲ Deep brushed timbers with defined grain including Larch Shiberiatora
 - ▲ Light coloured and smooth timbers like Kebony Legima

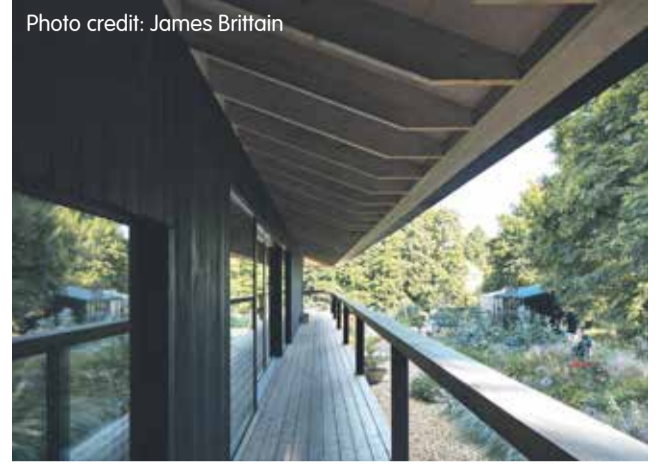
See the full range on our website: <https://exterior.supplies/charred-timber-cladding>

As an exterior finish, timber cladding enhances the thermal efficiency and sound proofing of a building. The charring process aids preservation, making Shou Sugi Ban® a low maintenance building material, that is also recyclable.

Exterior Solutions Ltd is a specialist in the manufacture and supply of Shou Sugi Ban® charred timber cladding. Please get in touch for further information, quotes and samples.

Contact
T 01494 71800
<https://exterior.supplies>

Photo credit: James Brittain



National Trench Safety UK



NTS UK are the exclusive UK manufacturer and distributor (available for hire and sale) of the full range of LITE guard aluminium trench shield support systems.

The LITE Guard range of aluminium trench boxes gives the contractor the strength and versatility of a steel trench box but only one third of the weight.

- The distinct weight advantage benefits are:
- ▲ Allows the contractor to work in restricted areas using a smaller excavator
 - ▲ Smaller excavators mean fewer weekly costs and transport charges
 - ▲ Smaller excavators less fuel
 - ▲ Smaller excavator less CO₂ emissions
 - ▲ Smaller electric powered excavators/no fuel/no emissions.

Call one of our team to discuss which aluminium box shoring is suitable for your project.

All of our aluminium range is available for hire or sale.

For more information, please see below:
T 03332 076007
enquiry@ntsafety.com
www.ntsafety.co.uk/box-shoring/lite-guard



ECO CLIPPER®

Get started saving today by mowing your sports fields with Eco Clipper

Please visit www.ecoclipper.com
Call +31 (0)646753560
Email info@ecoclipper.com

With highly efficient electric-powered mowers that can be used at high cutting speeds and in almost all weather conditions, the Eco Clipper FM4 Sport is a safe solution to significantly reduce mowing costs on sports fields.

PS LOCKS

The global market leader in the field of innovative and high-precision electromechanical locks

- Invisible
- Designers dream
- Battery operated
- Easy to install during manufacture & retrospectively
- Used across Retail, Hospitality, Healthcare settings
- RFID and Bluetooth Technology
- NO KEYS to lose

GUARANTEE
5 YEAR
WARRANTY

www.pslocks.co.uk | info@pslocks.co.uk | 01372 736980

Temporary Catering facilities for use during Kitchen refurbishments

Mobile Kitchens Ltd specialises in the hire of temporary catering facilities and foodservice equipment.

Ideal for events or to provide temporary catering facilities during your kitchen refurbishment, our versatile units and equipment offer an efficient and economical solution to the caterers' needs.

Production Kitchens, Preparation Kitchens, Ware-washing Units, Dry Store Units, Cold Rooms and Restaurant Units are available



as individual units in their own right or they can be linked together on-site to form a complete complex.

Alternatively, we can offer modular, open-plan facilities, usually for larger, longer-term hires.



We offer a free design service, and project management from concept through to delivery and installation on-site, plus full technical support throughout the hire period.

The standard specification of our Medium Production Kitchen unit includes a six-burner oven range, salamander grill, twin basket fryer, undercounter fridge, undercounter freezer, hot cupboard, double bowl sink unit with integral hand wash basin, storage racking, plus ample power points to plug in Microwaves, Food Processors, Toasters etc. Internal equipment can be interchanged, and clients can effectively specify their preferred layout.

We have many tried and tested design layouts and would be pleased to put forward our recommendations for your project.

So, if you're planning a refurbishment or need to cater for an event then why not give us a call and we'll be happy to provide advice and put forward a competitive proposal.

For further information or to arrange a site, please visit, email: sales@mk-hire.co.uk or call us on: 0345 812 0800 or visit our website: www.mk-hire.co.uk

PROVIDING ECOLOGICAL EDUCATION AND CONSULTANCY SERVICES ACROSS THE UK

Comprehensive, pragmatic ecological solutions to planning constraints benefitting from years of experience. Providing a range of services such as Ecological Appraisal, Biodiversity Net Gain, protected species surveys including bats, badgers, and great crested newt. Learn Ecology delivers a personal approach to each and every client, with dedicated project managers to see your site through from start to finish. Learn Ecology Ltd – ecological services, for everyone.

Visit www.learn-ecology.com
T: 07841 629273 | E: info@learn-ecology.com

Temporary Kitchen Facilities & Catering Equipment Hire

We regularly provide our services to clients when they are undergoing a kitchen refurbishment or require additional equipment for an event.

We offer a free design service, and project management from concept through to delivery and installation on site, plus full technical support throughout the hire period.

Quote Ref: BCRMKH397

The elements that make up our temporary kitchen and restaurant facilities can be provided as individual units in their own right – Production Kitchens, Preparation Kitchens, Ware-washing Units, Dry Store Units, Cold Rooms, Restaurant Units, etc - or they can be linked together on site to form a complete complex. Alternatively, we can offer modular, open-plan facilities, usually for larger, longer term hires.

We also offer a large range of 'stand-alone' kitchen equipment and would be pleased to put forward our recommendations for your project.

For further information or to arrange a site visit, please email: sales@mk-hire.co.uk or call us on: 0345 812 0800 or visit our website: www.mk-hire.co.uk

Mobile Kitchens Ltd specialises in the hire of temporary catering facilities and foodservice equipment.

WE CAN HELP BUILD YOUR DREAM

At Nordbarn, we specialise in creating stunning new homes using your existing barn, whether it is a steel-framed sheet clad building or a historic stone barn, we can help. We take your concept and use our expertise, experience, and skill to plan and implement conversion projects across the country.

At Nordbarn we can help you identify and realise the potential of your unloved and under utilised agricultural buildings.

To find out how we can help you achieve planning permission, unlock significant gains and maximise the value of your existing barn please contact us:

Barn Conversion Specialists 0114 2788 548 WWW.NORDBARN.CO.UK

Qualitative and quantitative fit testing and fit test training

We have experience in face fit testing, and we have Fit2Fit accredited fit testers in our team. Meaning our methods have been checked and confirmed with best practice for face fit testing in line with the BSIF and HSE.

Our experienced dental team, with a wealth of dental experience are now delighted to be able to offer a fit test service for FFP3, FFP2 and FFP1 masks. Using the 3M qualitative testing kit, we can arrange appointments at your workplace to fit test your staff, with your own masks. Quantitative face fit testing eliminates the guesswork associated with error-prone qualitative fit test methods. Using the PortaCount Pro Respirator Fit Tester 8030 fit tester, we can now quantitatively fit test so many types of respirators – gas masks, SCBAs, respirators. If the mask requires fit testing, count on the PortaCount Pro fit tester to provide the fastest and easiest HSE (UK) and OSHA (US)-compliant fit test method.

We also provide fit test training at our Head Office in Winnersh, Wokingham – The Train the Tester course to provide you with knowledge, skills and confidence or Train the Tester RPE Refresher, which is hands on and practical.

Contact Andy at: andy@cavity-fit-test.co.uk or call: 0118 214 6192 to get your local fit tester today.

You can visit: www.cavity-fit-test.co.uk for more information.

Plastering and flooring specialist restores buildings to former glory

MKM Contracts has been a leading plastering and flooring specialist for over 30 years across the UK and Ireland. Under the steely helm of expert Director, Pdraig McAtamney, this renowned business has worked on all building areas from five-star hotels, listed heritage buildings, private residential and social housing, healthcare, even Buckingham Palace in 2021.



Pdraig McAtamney is well respected in the industry, with a niche background in lime and lath rendering in heritage building restoration and oversees all aspects of project management, from initial consultation, on-site work, to completion. As an approved contractor for K-rend and Sto and specialist lime and lathe rendering systems, MKM has carried out delicate rendering on The National Trust Cottages in Kent and listed heritage buildings in Highgate, London.

Heritage-industry approved lime rendering can be carried out on both modern, and historical buildings, with the advantage that it is more pliable than OPC based products, allowing older buildings in particular space to insufflate, reducing building joint movement.

Beyond lath and lime rendering, MKM can offer quality assured work on: krend, EWI Insulated systems, all coloured renders, acrylic renders, traditional renders, floor screeds, dry lining, metal partitions and plaster boarding.

Speak to Ailish McAtamney: MKM Marketing Manager today for more information:
 T 07966 551965/07427 154670
 mkmplasteringltd@gmail.com
 www.mkmcontracts.co.uk

SJH Carpentry: Carving the future

SJH are a fairly young company having commenced trading in 2016.

Stuart, the Managing Director of the company has over 20 years' experience working in the construction industry, mainly in the residential housing market.

During this time, he has gained a wealth of knowledge and experience, which he is now investing into his own business. SJH always look to take on apprentices, as these are the guys that will be the future of our industry. We currently have 4 apprentices working for us and always look to take a new one on each year.



We currently work for a number of national house builders and bespoke residential developments. Our ethos is to provide quality workmanship with the use of skilled and well incentivised tradesmen, taking care to employ the best people possible for our company in order to ensure a 'right first time' delivery for our customers.

We carry out our works in accordance with all appropriate construction industry health and safety guidelines and we employ external health & safety consultants THSP to ensure that we are at all times compliant.

Contact Stuart Head, Managing Director,
 T 01234 635405
 M 07540 333481
 info@sjhcarpentryltd.co.uk
 www.sjhcarpentryltd.co.uk

Kieran Townsend,
 M 07450 978079

The Yoda range



Ingenious were delighted to supply the 'YODA' range of downlights for the stunning New Amano Hotel in Covent Garden, Architect & interiors by Woods Bagot, lighting design by Nulty+.

The Yoda range was selected for its Modular system design, install the universal bezels, trimmed or Plaster-in then ANY of the downlights, fixed, directional, snoot or wall wash will fit! allowing market leading flexibility and simplicity of install. The YODA range was very Highly tooled to ensure cost-effective production, allowing clients to fit feature loaded downlights at project friendly costs.

Yoda LED downlights:

- ▲ Fixed/adjustable/wall-wash/Snoot/Projector
- ▲ Low-voltage or 240VAC TRIAC dim engines
- ▲ 6/10 or 15W (CRI90-414>844lm)
- ▲ 5x Beam angles – swap on-site!

- ▲ Round or Square bezels
- ▲ Single/twin or triple bezels
- ▲ Plaster-in or Trimmed
- ▲ TRIAC/DALI/Bluetooth Dim
- ▲ ANY BS/RAL colour to order



Yoda 15W Projector

Contact
 sales@ingeniouslighting.com
 www.ingeniouslighting.com



Veesus is one of Europe's leading providers of point cloud visualisation software, and was founded in 2012 to help companies work more effectively with point cloud data.

Software

- Arena4D - Animation software
- Plug-Ins - SolidWorks, Revit, Rhino
- Zappcha App - Capture and view point cloud with the iPhone/Ipad
- Zappcha Cloud - Enables Veesus users to store point cloud data in the cloud and stream to anywhere in the world.



Support +44 (0) 7783 299755 Sales +44 (0) 7542 137335

For more information visit:
 www.veesus.com



Ingenious Lighting

unsurpassed product & technical support, we specialize in supplying project specific lighting solutions including the design and manufacture of complex bespoke systems.



Recent prestigious 'YODA' Projects – The Connaught Hotel / The Amano Hotel / 31 St James Square

Yoda LED downlights: a feature packed, budget friendly downlight system:

- Fixed / adjustable / wall-wash
- LV or 240VAC TRIAC dim engines
- 6 / 10 or 15W
- 5 x Beam angles - swap on site!
- Round or Square bezels
- Plaster-in or Trimmed
- TRIAC/DALI/Bluetooth Dim
- ANY BS/RAL colour to order



sales@ingeniouslighting.com
 www.ingeniouslighting.com



CLIENTS INCLUDE



CALLING ALL ARCHITECTS, LANDLORDS +more

- ✓ Help your Client even more: Great Advice built on 40+ yrs experience...
 ... e.g. Rental Options; £13k pa rental > Could earn £160k pa income.
- ✓ ... e.g. Many more 'Onsite Income' ideas (speak with us).
- ✓ Themed to your Venue/s : Bespoke Styles & Systems, ANY Space or Shape!
- ✓ Limitless Design : Limitless Features, Colours and Styles.
- ✓ Smarter Systems : eg. Make the most of your space; especially height!

UK Manufacturer. All-in-House. + Best Value per capita!



GET FREE ADVICE TODAY...

+44 (0)1792 422 818

mike@playcraftgroup.wales

OUTDOOR adventures

TRAMPOLINE SYSTEMS

SOFT PLAY SYSTEMS



... Good Health through play



Stanza Blue

Zoo Hardware is a designer and supplier of architectural door hardware, including door handles, knobs, locks, hinges and much more. Dedicated to ensuring its products meet the highest standards, Zoo Hardware uses only high-quality aluminium, brass, steel and zinc. This eye for detail and dedication to quality is of the utmost importance for Zoo Hardware and as such, the company is confident that it can provide the highest quality products at the most competitive prices.

Boasting unrivalled design skills through the company's in-house design team, Zoo Hardware assures its customers that they will receive top-end products, developed by its team of designers, who are highly qualified and experienced in all aspects of design

and production. The team constantly aims to push the boundaries of possibility for its designs, creating innovative, stylish and cost-effective hardware solutions.

The Stanza Blue ZPA range is a new and exclusive collection of designer aluminium levers built on a zinc screw on rose or aluminium backplate and is ideal for housebuilders and homeowners alike. The full metal construction of these levers utilises quality materials at a great price without compromise, whereas inferior alternatives on the market use aluminium for both the lever and rose, which can easily suffer from cross threading of the outer rose.

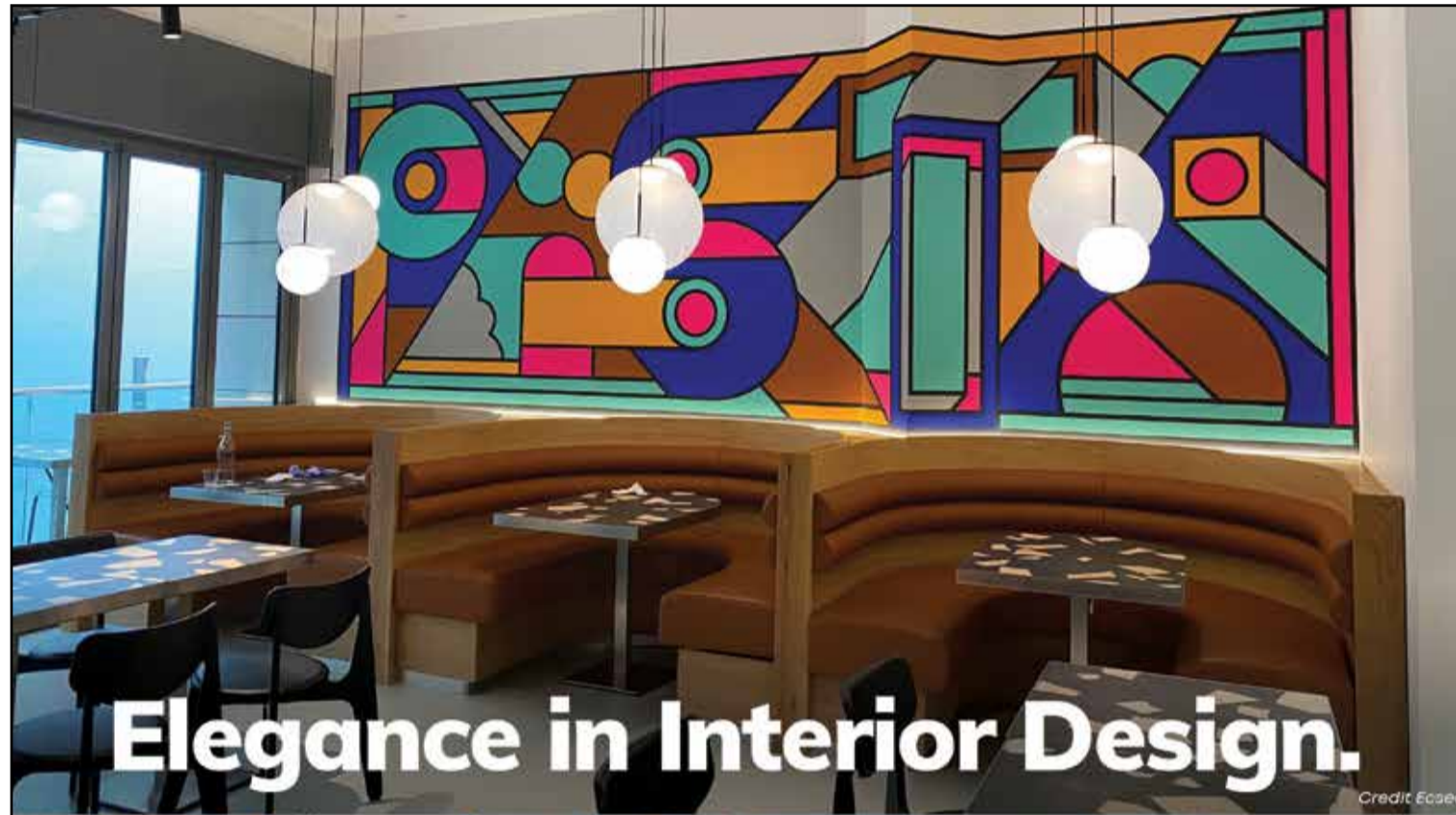
Offering a broad selection of lever styles to suit even the

most discerning tastes, the range consists of a mix of seven classic lever on rose designs with the addition of three new contemporary in-house designed levers, and two lever on backplate options for the more traditional residential feel. All variations are available in three distinct finishes: Polished Chrome, Satin Chrome, and Matt Black, each one suitable for any modern or traditional interior. The inclusion of a high-quality Matt Black finish at this ranges' price point will be an exciting addition for customers, and with black levers having cemented themselves as a fashionable interior design trend, we are certain they will be a popular choice for many households throughout the UK.

www.zoohardware.co.uk



ZPA090 – Bilbao Lever



Elegance in Interior Design.

Credit Ecsec



Looking lean – Strand makes warehouse improvements



Strand Hardware has developed leaner assembly, dispatch and warehousing processes – saving hundreds of staff hours each year – in a joint project with a crack team from Warwick University.

The project with WMG (Warwick Manufacturing Group) has optimised warehouse layout and movement for the efficient flow of picking, assembly and packing operations across key ranges. It involved measuring processes via time study and motion analysis through site visits, video capture and process flow assessment. Findings outlined cycle times and mapped the movement of people.

The resulting report outlined a series of recommendations to improve process capacity, including quick wins and minor modifications to warehouse and workstations layout to introduce time savings. This has led to the introduction of mobile Kanban shelving within the assembly area to allow components to be picked and assembled more efficiently. The double-sided racks allow bins to be restocked by a dedicated person who conveys stock between Strand's warehouse and its head office on another part of the site.

Steve Marshall, Managing Director of Strand Hardware, said that the project had been 'thorough and exacting.'

"Strand Hardware has grown over 30 years. Like most companies, while scaling up, we have focused on customer requirements and day-to-day business operations. We felt that the time had come to review what we were doing and whether we could be doing it more efficiently, which led to the opportunity to work with WMG.

"Having experts come into the business with fresh pairs of eyes, ask the right questions and with the knowledge to assess and analyse our operations has been invaluable. It was important for us not to disrupt warehouse activity, so recommendations had to incorporate improvements that would be easy to apply. In the long term, this will make our business leaner and more efficient – the ideal foundation for future growth," he said.

The project was undertaken with funding from the Digital Innovation for Manufacturing programme.

Strand Warehouse and Production Manager Andy Michel said that it had been fascinating to work with the University Team, "The results will make the job easier for many of the team and help Strand Hardware in its continuous improvement."

Chris Wang, of WMG SME Group added, "WMG and Strand Hardware have worked collaboratively to analyse their current assembly area in readiness for optimising their production facility. Across the three recommendations put forward, a maximum 50% reduction in cycle times per unit has been predicted which allows for a 5.105% capacity increase."

For more information on Strand Hardware's range of products, contact: info@strandhardware.co.uk, call: 01922 639111 or visit: www.strandhardware.co.uk

Specialists in:

- Banquette & Booth Seating
- Bar Manufacture
- Upholstery Services

Hannaby Interiors manufacture booth and banquette seating to the highest standards for the leisure and hospitality industries, together with office and educational sectors.

Our relationships with suppliers, contractors, architects and interior designers ensures we can produce a complete seating project to exceed expectations and meet budget and timescale requirements.

We can work from simple sketch drawings, to a full design layout to deliver a high-quality, truly bespoke product that will bring your concepts to life.

Services:

- ✓ Fixed, Booth & Banquette seating - all our seating is crafted in-house, by a team of expert joiners.
- ✓ Upholstery Services - from new concept designs or to simply recover and bring old interiors back to life.
- ✓ Full refurbishment - from consultation and design, to hand-crafted manufacture and installation.
- ✓ Bar Manufacturer - bespoke bar manufacture and installation using materials such as 3D foils, glass quartz and Corian.

We live by our company values, Simple, Brilliant and Personal



For more information and to see how we can assist with your next project, please visit our website: www.hannabyinteriors.co.uk

Office: 01909 563175
 Lee Hannaby: 07581 194627
 Email: enquiries@hannabyinteriors.co.uk

Air conditioning and chiller systems specialists

Chilled System Solutions pride itself on the vast experience, capabilities and customer service it delivers assisting clients with their installation, maintenance and repair requirements.

As an Air Conditioning company based in Coventry, West Midlands, Chilled System Solutions is perfectly located close to Birmingham and the surrounding motorways to serve throughout the UK.

Whatever your needs, Chilled System Solutions has all the capabilities to assist you with all your Air Conditioning requirements. This includes Chiller Service and repairs, Chiller refurbishment, Danfoss Turbocor service and repairs, Compressor overhauls and replacement, Commissioning services, Project Management covering The Construction Design and Management regulations 2015 (CDM), Data centre cooling, Downflow units and close control systems, Air source

heat pumps, Pipework installations, Refrigeration systems and so much more.

Chilled System Solutions works with both Domestic and Commercial Air Conditioning clients and can help to advise and recommend the right equipment for your needs. Its trained project team have the expertise to plan your installation with the added benefit of a free no-obligation survey right through to the commissioning and handover of all equipment.

Air Conditioning brings many advantages to your building or home and can be a great cost-effective way to monitoring the temperature of your building at all times of the year. Whether you're looking for a small split system, a large capacity VRF or a 1 Mw Water Chiller, Chilled System Solutions has the right application for your needs.



Get in touch below for a free no-obligation site survey and quotation.

Contact
T 02475 090260
info@chilledsystemsolutions.co.uk
www.chilledsystemsolutions.co.uk

New small duct heating and cooling system set to tackle rising temperatures in UK homes

The **Unico System**.



A new small duct heating, cooling and ventilation system by US manufacturer Unico Systems has been launched in the UK.

The Unico System, which is installed in half a million homes and businesses throughout the US, provides heating, cooling and ventilation along with improved air quality and well-being.

The decision to make the Unico System more widely available to UK residents follows a series of record-breaking summers, as well as increasing demand for greater climate control.

The near silent, system, which operates at under 30 decibels, uses aspiration to deliver draft free heating and cooling ensuring temperature differentials are no greater than one degree throughout the home.

Richard Soper CBE, of Unico Systems UK, said, "The US is used to much larger variances in temperature, meaning that domestic ventilation and air conditioning is often installed as standard. As a result, the Unico system is fully adapted to the needs of domestic properties; providing effective climate control, but also operating at a barely audible sub-30 decibels. For self-builders and renovators this provides a unique opportunity to give occupiers the same level of climate control and comfort that they've come to expect in cars, hotels and gyms, no matter the season."

Contact
T 01384 422094
unico@bellplumbing.co.uk
www.unicosystem.co.uk



Residential Ventilation Experts

Southwest Ventilation are Specialist installers of residential ventilation systems to home owners, landlords, developers, local authorities and housing associations across Cornwall and The South West of England

We have the knowledge, skills & equipment to offer all types of ventilation solutions. Southwest Ventilation are proud to offer many British made products. If you would like a free, no obligation site survey or just some friendly expert advice, call the ventilation specialist today.

All South West Ventilation installers are fully qualified and insured to install residential ventilation products for homeowners, developers, landlords, local authorities and housing associations.



Tel: 01326 727101 | Email: info@southwestventilation.co.uk | Web: www.southwestventilation.co.uk
Address: Ponderosa, Trevenen Bal, Wendron, Helston, Cornwall TR13 0PP

Silverbridge has the tools to mend a broken chain



"A broken chain shouldn't prevent housebuilders' sales getting a move on," says Silverbridge Properties. With one in three home sales typically falling through before completion, Silverbridge's Chain Break service can remedy the issue of when a buyer, or seller, pulls out anywhere in the chain.

A quote can be prepared for the customer, usually within 48 hours and, providing the valuation conducted through RICS is in order, a formal

offer is then presented. Silverbridge then takes care of all the legal documentation, including fees, with completion within four weeks – and sooner still if deadlines need to be met.

In a recent example, a developer's customer was in danger of losing her dream home after her buyer's buyer failed to obtain finance and pulled out. Silverbridge Properties stepped in quickly, bought her property for cash,

thus enabling to complete the deal; much to the relief and satisfaction of the developer. She was even given a 28-day licence to occupy, which made the move so much more stress-free.

So, the next time that you're faced with a broken chain, why not consider the benefits of Silverbridge Properties' Chain Break service by calling on: 020 3780 0780 or emailing at: info@silverbridgeproperties.com.

Air & Hydraulic Tool Hire

We have a wide range of construction tools for hire

01909 519 519
appsiteservices.co.uk



APP SITE SERVICES

Unit 1,2,and 8 Abbey Way | North Anston Trading Estate
Dinnington | Sheffield | S25 4JL UK
01909 519 519 | appsiteservices.co.uk

**A
P
P**
site services
PART OF THE **airpower** GROUP

Direct Hoist is top of the class



Direct Hoist has rocketed to the top of the class, with its newly-launched programme of training courses already in high demand.

Direct Hoist, a midlands-based construction hoist sales and hire specialist, recently expanded its Lincolnshire site to include a bespoke teaching centre. And now, as a further step towards being a one-stop shop for its customers, Direct Hoist is offering tuition at times to meet their convenience.

Rob Wilson, Direct Hoist's managing director is known for pre-empting a client's requirements, thanks to 30-plus years in the hoist hire industry. He says, "We intuitively know what our customers need, so we've started running courses at select weekends. Last Saturday, for example, we laid on a special day for a scaffolding firm to ensure the company didn't have any staff downtime."

Direct Hoist's expertise in construction hoists ensures all training is industry-specific with up-to-the-minute knowledge of equipment, working practices and regulations. Its facility includes a 10m training tower, capable of transporting a two-tonne platform hoist to full height. The firm's fully qualified tutors place keen emphasis on safety, to ensure students understand the essentials of keeping themselves and others away from risk.

Courses can be fully accredited to NVQ (National Vocational Qualification) Level 2 in hoist installation. Experienced students are offered a two-day session in the theory and practical elements of assembly and disassembly of various lifts. A week-long course is available for a more comprehensive understanding of erecting and dismantling different types of hoist.

At the end of each course, students are examined by an external assessor before they can receive a certificate, which will be recognised on most building sites.

Direct Hoist has more programmes on the horizon, including electrical safety and working at heights. So if your firm has any training goals, Direct Hoist can certainly show you the ropes.

T 01724 781647
info@directhoist.co.uk
www.directhoist.co.uk

Rototilt® makes it possible

Time is money. That is why Rototilt® provides tools and technologies that give you new excavator advantages for all types of assignments: Tiltrotators, control system, machine couplers, work tools and innovative technologies that make your work faster, safer, smarter, easier, and more profitable.

Read more: rototilt.com/products



Open-S
The open industry standard for fully automatic quick couplers.
Read more at www.opens.org

ROTOTILT
Making it possible since 1986

Rototilt Ltd | Sales & Service 0800 772 3355 | info.uk@rototilt.com | rototilt.com

Looking for quality landscape & building materials from a trusted supplier?

Established in 1998, Stone Zone and Landscaping Centre are a nationwide trade supplier, offering quality landscaping and building materials at trade prices.

Recently being awarded with the Gold Trusted Service Award for 2022, this family-run business offers a 10% discount to Trade card holders and fast delivery.

The Stone Zone has supplied materials to National Trust Parks, Caravan Parks, Housing Developments, Golf Courses, The Tower of

London and many more affluent settings!

Now proudly supplying a 'Developers' range, the Stone Zone offer stunning porcelain paving products designed for newly-built homes, at affordable prices.

Are you a Greensman or Greenkeeper? Their Wessex range consists of Bunker Sand, Silica Sand, Dutch Tree Sand and more. They can even make bespoke soil blends tailored to your requirements!

To cater to the environmentally conscious, the

Stone Zone have developed their own eco-friendly 'Sustainable range', including FSC Certified Oak Sleepers, Composite Decking and locally blended soils.

Stone Zone pride themselves on being 'a service you can rely on' and are committed to putting their clients at the heart of what they do. With a dedicated account manager, best rates and exceptional customer service are guaranteed.

To find out more, call on: 01202 874207 or email: sales@stone-zone.uk.



Eco friendly sustainable building materials



Ecomerchant are based at the National Self Build and Renovation Centre Swindon



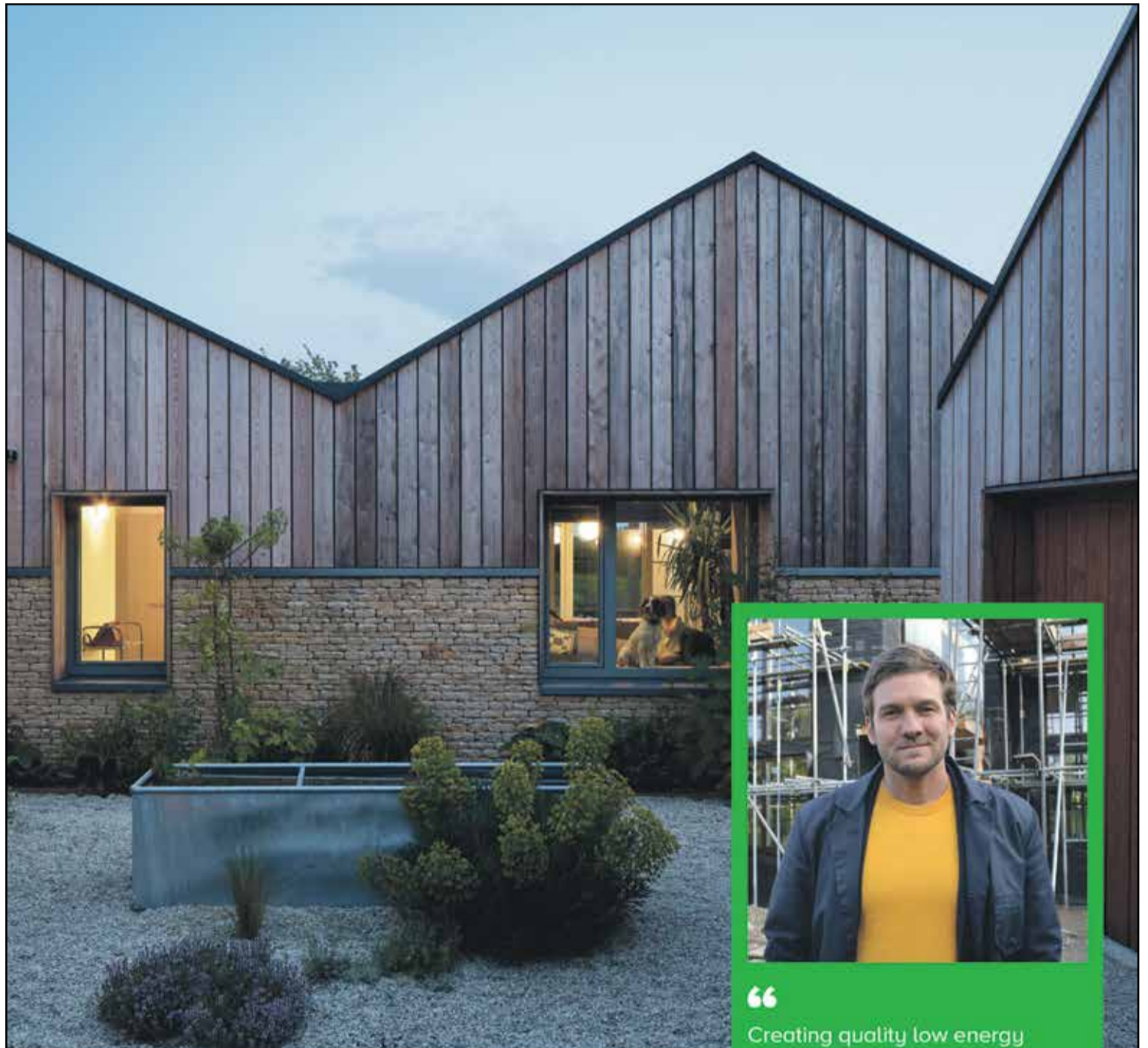
Established in 1998 Ecomerchant, now based at the National Self Build and Renovation Centre, is an independent employee-owned builder's merchant. Ecomerchant's core values are ethical trading, healthy materials and sustainability, Ecomerchant has an excellent reputation as a reliable provider of sustainable construction materials, with a large and loyal customer base, Ecomerchant is helping to ensure that we all can build healthier, more energy-efficient, environmentally sensitive buildings.

Ecomerchant supplies a vast range of products and materials including, insulation, airtightness membranes, tapes and systems, sheathing, sarking and building boards, timber windows & doors, lime and clay plasters and renders, natural paints, renewable energy products, water saving and off-grid systems, groundwork and landscaping materials and so much more all chosen to help create healthier and more energy efficient homes, schools and workplaces.

All Ecomerchant's products are chosen for their ability to eliminate, reduce or significantly improve environmental performance, building and occupant health and reduce running costs.

Our website has a huge range of products and a wealth of general and technical information to help you decide what is best for you; many products are available to buy online. Our knowledgeable and helpful staff will be happy to price your enquiry, answer technical questions, take orders or provide quotations.

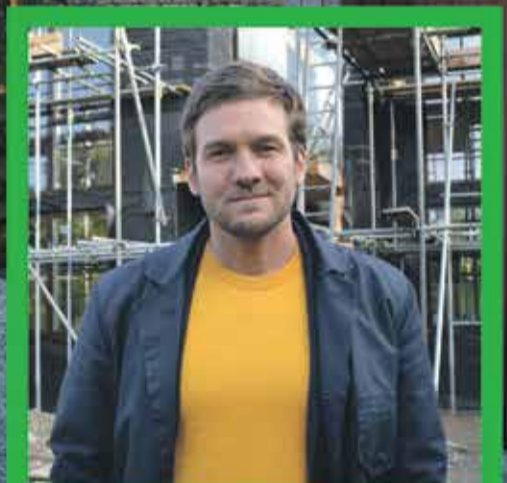
T 01793 847444
info@ecomerchant.co.uk
www.ecomerchant.co.uk



SUSTAINABLE BUILDING MATERIALS FROM FOUNDATION TO RIDGE



www.ecomerchant.co.uk
info@ecomerchant.co.uk
 +44 (0) 1793 847 444



“ Creating quality low energy architecture requires a dedicated, knowledgeable team from initial concept right through to finishing touches.

Ecomerchant is a key part of that team for Charlie Luxton Design. Our values align, creating good buildings that perform and last whilst respecting our environment. ”

Charlie Luxton
 Principal
 Charlie Luxton Design

Service Sealing Solutions Ltd visit DOYMA

Service Sealing Solutions Ltd is the sole UK distributor for the sealing industry's



top manufacturers; DOYMA and HKD. Service Sealing Solutions Ltd supply the full range of DOYMA and HKD products, to suit all situations from sealing power cables, communications cables, pipes and ducts and district heating pipes, permanently preventing an infiltration

of gases and water into the building. DOYMA's products are designed to solve all watertight sealing requirements and prevent against structural damage. DOYMA products are also guaranteed watertight for 25 years.

HKD which is now owned by DOYMA, manufactures a vast range of pipe sealing systems and service ducts with a guarantee that its products can withstand up to four bars of pressure. All of the HKD product range can be combined with the DOYMA's Curaflex range,

one of the most popular DOYMA ranges. Service Sealing Solutions Ltd specialises in high-quality service duct sealing systems for utility services and watertight seals, offering the highest level of expertise to developers and specifiers for sealing against water and gas entering around service entries in basements and high-rise buildings.

T 01952 510050
tina@servicesealingsolutions.co.uk
www.servicesealingsolutions.co.uk



Husband and wife team, Jim & Tina have recently visited DOYMA in Germany to find out about the innovative products that DOYMA have been developing

Service Sealing Solutions Ltd – suppliers of DOYMA products



Service Sealing Solutions Ltd are the sole UK distributor of DOYMA products. Wherever services are installed through walls, ceilings or floors, penetrating water may cause damage to buildings. Lack of attention to the points of entry of pipes and cables into the building can have serious results: damp cellars, equipment damaged by water ingress and high repair costs. Service sealing systems ensure professional and perfect pipe sealing, thus presenting excellent preventative measures against structural damage. The very best in German engineering is used to seal penetration points at the wall to permanently prevent any infiltration of gases and water into the building, and the duct sealing systems are guaranteed for 25 years. Service Sealing Solutions supply the full range of products to suit all situations for power cables, communication cables, pipes and ducts, and specialising in sealing district heating pipes.



01952 510050 www.servicesealingsolutions.co.uk
sales@servicesealingsolutions.co.uk

Natural Roofing Slate priced to help YOU win projects

RoofingSlateDirect.com
High Quality Slate at Low Prices!

Quick & Easy Website Ordering

UK Wide Delivery & UK Technical Support

BS EN 12326-1:2014 to A1, S1, W1 & T1

100 year GUARANTEE

Good match for Welsh Slate or Ballachulish Slate at a much lower price

Try us on your next slate roof project and find out what you've been missing!

www.RoofingSlateDirect.com
 T : 0333 323 1768
 E : contact@roofingslatedirect.com

Don't let limited access limit your options



The UK's rate of new home construction cannot keep pace with inner-city population growth. A new home built today would need to last 1000 years at current replacement rates. In addition, space restrictions in urban areas prevent housing developments where they are most needed. Without new housing, people in the UK must make the most of the existing housing stock.

The UK has experienced a rise in Outdoor Living trends over the last decade, as homeowners invest in maximising their plots. The COVID-19 pandemic exacerbated this trend, which saw the UK Landscape industry grow by 1.4% year on year between 2017 and 2022. Industry revenue is anticipated to rise by 5.2% in 2021-22 as trends continue.



How can homeowners in cramped, urban housing get in on the Outdoor Living trend?

Azpects Ltd offers a simple solution: EASYClickBase, a synthetic sub-base that significantly reduces the traditional 'dig-out' part of the installation process for patios, paths, and driveways. For example, early feedback shows that for a 50m² patio, EASYClickBase requires an excavation of around 2-4 tonnes and just 2-5 tonnes of a fine replacement aggregate depending on site conditions. Traditionally, this would require the excavation of 16 tonnes of waste by-products, and the import of 16-20 tonnes of traditional subbase aggregates, requiring either heavy machinery or a significant amount of labour.

Several early adopters of EASYClickBase have reported trimming day's labour from the expected completion time while giving clients the garden they have always wanted.

EASYClickBase is lightweight and easy to carry, making it easy to install even with restricted access. The reduced dig out makes wastage less of an issue for tight streets that lack space for a large skip, as smaller skip bags can be removed by a flatbed vehicle instead.

Manufactured from 100% recycled ABS plastic, any offcuts of EASYClickBase tiles can be recycled again, reducing waste and improving the sustainability of hard landscaping projects.

If lockdown taught us anything, it is how vital outdoor spaces are for our physical and mental wellbeing. With a significant percentage of the UK workforce expected to continue to work from home, it seems likely that investment in hard landscaping will only continue.

Find out more at: www.azpects.co.uk



RP Associates.eu

RP Associates is a global outsourced company specialising in **Procurement, Credit Control & Marketing.**

RP Associates provide a first class service, from consultation to facilitation, ensuring all clients' needs are met, sourced and delivered.

For more information contact
roger@rpassociates.eu

Sussex: +44 (0)1825 791703 London: +44 (0)207 206 7349



Specialist in large section timber,
irregular sizes and long lengths.
Sections 600 x 600 and lengths to 15m.

Planed, treated timber, railway
sleepers, tile battens, arris rail, feather
edge boards, telegraph poles, glulam
and more.



WARDELL

LONG LENGTHS

Tel: 01469 532922

info@longlengths.com www.longlengths.com