



**BCR**  
Building & Construction Review

# ISSUE 402

## December 2023

0121 725 1587 | [buildings@bestpracticeuk.co.uk](mailto:buildings@bestpracticeuk.co.uk)  
[www.bestpracticeuk.co.uk](http://www.bestpracticeuk.co.uk)

Search for us on LinkedIn and follow us on Twitter [bcr\\_uk](https://twitter.com/bcr_uk)



**Service Sealing Solutions**  
Page 4-5



**Wallbed Systems**  
Page 8-9



**WJ Group**  
Page 20



**Wardell Long Legths**  
Page 22



**DCON Safety**  
Page 34

## SWIFIX signs contract with CityFibre

Multi-award-winning company: SWIFIX was established in 2016 by Director Paul Brown and supplies expertly-designed fittings for refitting and installing lightweight and heavyweight items through EWI systems. These ingenious fixings are approved and specified by many EWI system designs and can be used during or after system installation.

Building & Construction Review recently selected SWIFIX for its Commitment to Excellence throughout the EWI industry and the good news keeps coming, with an exclusive new contract revealed with CityFibre.

The Public Switched Telephone Network (PSTN) will be fully replaced with fibre-based digital technology across the UK by the end of 2025. CityFibre is a well-known open access, fibre-only operator and will be using five SWIFIX products to support this mammoth installation, from fibre broadband cables to utility boxes. SWIFIX already has an ongoing successful contract with SKY EUROPE Telecommunications for a new product for

securing cables and small pipework. The company now has its sights set on more European-style contracts and launched a European-specific product at the Afbouw Vakdagen trade show in The Netherlands during November.

The SWIFIX range is PAS2035 compliant for retrofitting, modular housing sector and futureproofed for maintenance provision, meeting robust requirements to mitigate against insulation compression, with its trademark watertight seal protecting against water ingress. There are products available for every fixture: regardless of format or weight and the range is approved and recommended by the UK's leading system manufacturers.

Not only is SWIFIX the company of choice for many system designers but the fixings are made from partially-recycled plastics, with all parts and packaging fully recyclable, reducing the need for landfill and displaying sustainability best practice.



SWIFIX external wall fixings are available via wholesale merchants and come highly recommended by the UK's leading systems manufacturers.

For more information, see the website below:  
[www.SWIFIX.co.uk](http://www.SWIFIX.co.uk)

## Recognising excellence through accreditation

Have you ever wondered if there are quality standards around timber decking and cladding products or services? Do you need technical advice or simply design inspiration? Look no further than the Timber Decking and Cladding Association (TDCA). We're here to raise the bar on all things decking and cladding. Whether you're a landscaper, architect, specifier, contractor or DIY enthusiast, we can help. We have industry experience, a library of free resources and a growing member supplier list with independent third-party verification.

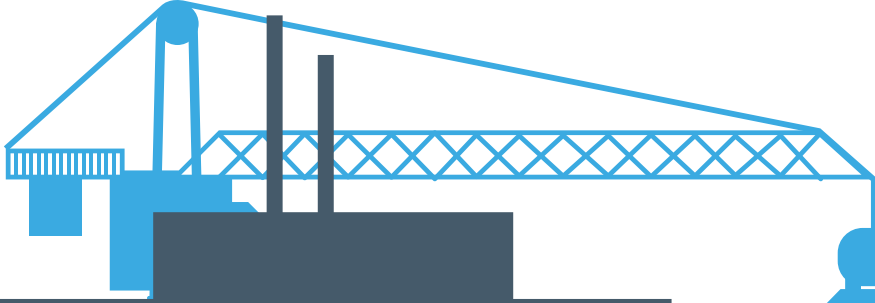
To get a job done right first time, using the best calibre of products with correct standards of installation is essential. But whatever the market, it's often difficult for a buyer to distinguish good from bad quality, whether it be a specialised deck fixing or a reputable cladding installer – especially

when searching online. Price point isn't always an indicator of reliability.

Step in DeckMark and CladMark. TDCA accreditation schemes which recognise manufacturers, suppliers and installers who work to the highest standards in their fields. From wood coating manufacturers to deck design engineers, simply search our database to pinpoint specific suppliers. Or get in touch - TDCA offers a sourcing service, just give us your project details and we'll find the right supplier for you.

Visit [www.tdca.org.uk](http://www.tdca.org.uk) to learn more or call 01977 558147





# CONTENTS

## On the cover



Swifix

1



Eco Clipper

6-7



BespokeCrete

12



Hydro Heaters

15



Smart Storm

23

Company Of The Year **3-7**

Commitment To Excellence **8-11**

Outdoor Building **12-15**

Landscaping &

Outdoor Building **16-18**

Timber Build **19-22**

Building Products

& Services **23-33**

## Hello & welcome to Issue 402 of BCR...

As we approach the end of 2023, we take a moment to take stock of all the innovative products and services that have energised the UK building and construction industry over the last 12 months. Though it has been a challenging year for the sector, we have highlighted companies that are bucking the trend, taking a leap of faith and leading by example.

From sustainability best practice, to bespoke joinery and intriguing new project management systems, this year we have covered a vast range of hot topics dominating the industry, helping forge a stronger, robust future.

Service Sealing Solutions Ltd was our Company of the Year 2023, displaying a firm commitment to supplying premium-level duct sealing systems and watertight utility seals. Working across diverse sectors such as transport, civil engineering, energy for waste and even country estates, the company has proved itself indispensable to many sectors.

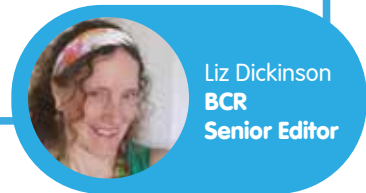
Bluerun Ltd was our celebrated Timber Build Company of the year 2023 for exceptional bespoke joinery to the domestic and commercial markets. The family-run business prides itself on using hand tools, not CNC machinery for outstanding results every time.

Other worthy highlights include: BONA for our end of year commitment to Excellence and Elevate, Tile Central, Wallbed Systems and Swifix for Commitment to Excellence throughout 2023. LS products was our Landscaping Company of the Year and ADVECO: the hot water specialists have been huge innovators with domestic hot water for commercial-scale projects, such as the FUSION system.

The noted highlights in this, our last issue of the year include: Service Sealing Solution Ltd's early showcasing of the new DOYMAfix® product, autonomous large area mowing systems from LS products, BONA's new Traffic Go product and Bluerun's work with replacement casements on listed buildings.

Have a wonderful Christmas and Happy New Year. We will be back in the New Year to bring you all the latest innovation across 2024.

Email us at: [buildings@bestpracticeuk.co.uk](mailto:buildings@bestpracticeuk.co.uk)



Liz Dickinson  
BCR  
Senior Editor

## Contacts

### Publication Management

**Sam Morton**  
Sales Manager  
T 07894 909036  
[buildings@bestpracticeuk.co.uk](mailto:buildings@bestpracticeuk.co.uk)

### Production

**Robert Sharp**  
Production Manager  
[production@businessandindustrytoday.co.uk](mailto:production@businessandindustrytoday.co.uk)

### Accounts

**Paul Whitaker**  
Accounts Manager  
T 07974 087740  
[accounts@bestpracticeuk.co.uk](mailto:accounts@bestpracticeuk.co.uk)

### Editorial

**Liz Dickinson**  
Editor  
[liz@freshmedia-uk.co.uk](mailto:liz@freshmedia-uk.co.uk)

Search for us on [LinkedIn](#)   
and follow us on [Twitter](#)  [bcr\\_uk](#)



# Bluerun recognised for another award



In this issue of Building and Construction Review we are pleased to award Bluerun Ltd as our Timber Build Company of the Year.

For over three decades, Bluerun has been at the forefront of the construction industry manufacturing quality, bespoke joinery to the domestic and commercial markets. The company was initially established by John Jones, who is the current

MD and Peter Clayden, and in 2008 John, his wife Doreen and son Jeremy took over as sole owners.

As a family they each bring their own expertise to the team, and to enable John to semi-retire in December 2019 his daughter, Dee Newman joined the team as Finance Director to help oversee the day-to-day running of the company as well as manage the accounts, payroll, quotations and managerial duties.

Its rare these days for a company to manufacture using the 'old school' method of hand tools, however, this is one of Bluerun's proudest accolades and to this day it still remains one of the industry's leading bespoke joinery's to only use power tools and machines to machine timber with no computer aided equipment.

Dee added, "We do not use any CNC machines, drawings are created by hand, and everything is assembled in house. Because we are very hands on, still using hand tools for the finishing touches, our team take great care in every joinery item that they make. We take great pride in our work, and make every effort to ensure customer satisfaction."

Witnessing Bluerun's portfolio for both domestic and commercial clients, it is clear to see the high-level of expert craftsmanship that comes with the experience in carpentry that each member of the team bring. It will change the way you think about custom woodworking and open your eyes to the endless possibilities that comes by using a bespoke joinery service.

With work starting to pick up again, Dee spoke to us regarding some of the latest jobs they have received. "There have been quite a few jobs recently where we've had to manufacture replacement casements on listed buildings with the existing glass needing to be re-used. These have all been successfully swapped over. These types of jobs have to made on a like-for-like basis. Similarly, we've also manufactured some side sliding sash windows recently for a listed building where council permission had to be granted. This involved not only matching existing windows, but preparing suitable drawings for the home owner to send with their application."

Bluerun is also making a conscious effort to go greener in its practices and manufacturing processes and has therefore decided to change their current defunct fluorescent lighting over to LEDs with the hope to reduce costs and carbon footprint. These types of goals truly reflect the company's drive and determination to think outside the box to produce the highest products and services. As a family run business, Bluerun can gift greater levels of attention, passion and care into every detail for every customer, and this is something Dee is very proud of. "We are family owned and run, and we think that reflects in our work ethos. We are working on a couple of changes within the business to make it easier for our processes and customers. In the short term, we are finally adding a shop to our website for various items that have been manufactured during the quiet times such as mirrors, tables, clocks, etc. Long term we would still like to expand the bench joiner team and are working hard on how best to do that. We are always very proud to be selected for an award, as this reflects on our team of bench joiners and the excellent work they produce, as well as how well we all work together to drive the business. Thank you."



For more information, see below.  
 T 01799 599995  
[dee@bluerunltd.co.uk](mailto:dee@bluerunltd.co.uk)  
[www.bluerunltd.co.uk](http://www.bluerunltd.co.uk)

# Sealing heat pump services with precision German engineering –

## meet DOYMAfix®



### Service Sealing Solutions Ltd

We are delighted to announce that Service Sealing Solutions Ltd is the recipient of our Building & Construction Review Company of the Year 2023, for an outstanding contribution to premium-level duct sealing systems and watertight utility seals.

Service Sealing Solutions Ltd supply a number of different sealing solutions across the UK to both the public and private sectors, from transport infrastructure projects, country estates, civil engineering projects, through to energy for waste. As the sole UK distributor for the sealing industry's renowned top manufacturers: DOYMA and HKD, Service Sealing Solutions Ltd specialises in high-quality service duct sealing systems for utility services and watertight seals.

From its Shropshire base, Service Sealing Solutions Ltd has built up a loyal customer base across the UK but the company is more than a distributor: it goes to great lengths to work with specifiers and contractors to make sure the correct products are used. Correct sealing ensures that the building's utilities in question remain accessible, allowing any planned or emergency maintenance work to be carried out effortlessly. Premium products from Service Sealing Solutions Ltd are industry gold-standard and seal against water, air and radon gas ingress.

We have previously featured Service Sealing Solutions Ltd for our BCR Recommends Award and now, as we approach the end of the year, we want to focus on how this Shropshire-based company has bucked the trend and swerved the construction downturn. We spoke to Jim McAra: Sales Director about how the company has fared this financial year,

"According to Glenigan: the trusted, provider of UK and Ireland construction sales leads, market analysis and forecasting, it has been a tough



year for the industry but it is hoped, now that interest rates have peaked, the construction industry will start to recover during 2024.

Against this backdrop, Service Sealing Solutions, have seen a 25% increase in sales enquiries and actual sales growth. We have retained our loyal customer base and gained new customers. We are largely known for working underground, sealing against water ingress. Looking ahead we are aiming to promote air tight and insulating products for the growing heat pump market.



we are looking to further capitalise on DOYMA products, with the exclusive introduction of the DOYMAfix®. This product will be aimed at heat pump installers, which is a growing trend in the UK, as part of a move towards more sustainable, renewable energy sources. The seal can be used across a range of wall structures for air-to-water heat pumps, allowing integrated thermal insulation and wall penetration for above-ground building exterior walls.

We will be showcasing this new, exclusive product across the construction sector in the New Year and it signals our move towards a rapidly growing green building sector, as part of the push towards the UK Government's tightened Part L Building Regulations and 2050 net-zero targets."

Service Sealing Solutions Ltd has the exclusive rights to distribute German DOYMA products across the width and breadth of the UK. DOYMA stands head and shoulders above its competitors, with its superior German engineering. DOYMA products have a fantastic reputation: they come with a 25-year warranty.



It is imperative that building penetrations such as cables and pipes have permanent seals across many building types from power plants, airports, to large industrial plants and DOYMA products provide precision sealing systems specifically for this purpose.



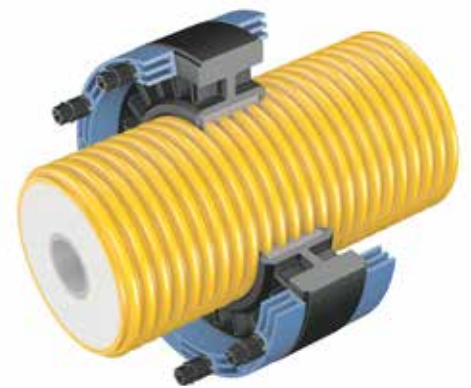
Service Sealing Solutions Ltd have supplied DOYMA products to many high-profile projects providing water-tight seals for the HS2 engineering project, through to London Kings Cross, as Jim outlines,

"Our portfolio has certainly widened this year, with more diverse projects. DOYMA products are industry-leading, with an expertise spanning over fifty years and are perfect for underground utility projects that demand water protection and ingress.

Beyond the larger commercial projects, we have diversified and worked with some new, exciting projects such as the heritage sector, namely large country estates, typically being converted for private usage or for commercial, recreational purposes. These have been located all over the UK and it has been an exciting new venture for us.

Another new sector we have worked in is the renewable energy sector, where we have supplied our largest sealing gaskets and puddle flanges to date, 1.5m diameter! Though DOYMA can and have supplied gaskets >3.5m in diameter"

DOYMA has recently released its new generation Curaflex Nova® gaskets, optimally designed for sealing solutions across a range of diverse applications. The Curaflex Nova® gasket inserts are suitable to seal against pressing and non-pressing water. The primary advantage of these seals is that they can be installed without the need for special tools. This is due to the integral, unique ITL principle (Integrated Torque Limiter), which guarantees the correct torque when the gasket inserts are tightened. All Curaflex Nova® frame rings are made of a special non-conductive, high-performance plastic which prevents



electrochemical corrosion. Optimal contact pressure is achieved by using extremely slip-resistant and highly aging-resistant EPDM elastomer between the frame ring type.

Furthermore, Service Sealing Solutions Ltd supplies HKD products, which are now under the ownership of DOYMA. HKD manufacture a wide range of pipe sealing systems and service conduits that can withstand up to four bars pressure. The advantage of HKD systems is that they have a sealing solution for service conduits cast into concrete without the sleeves, and are supplied and ready to use, requiring no site preparation work prior to installation. With options such as KE Socketless service conduits, KG Wall Ducts and Floor Ducts, together with KG Twin Sockets for installation in pump sumps, HKD products are ideal for situations where suitability for thin-walled concrete structures is vital.

"We are delighted to be selected for the Building & Construction Review Company of the Year 2023- it is testament to our hard work and dedication throughout the last twelve months but also shows our ability to diversify across new, exciting sectors" concluded Jim.

For more information, please see below:  
**T 01952 510050**  
[www.servicesealingsolutions.co.uk](http://www.servicesealingsolutions.co.uk)

# Eco Clipper® range to soon include new autonomous mower



In this issue of Building & Construction Review, we are delighted to select LS Products BV as our Landscaping Company of the Year.

Great Britain has always been a sport-loving nation and is widely considered the birthplace of popular sports such as cricket, rugby and football. With iconic sporting venues such as Wembley Stadium, Old Trafford to Anfield, millions of fans tune in across the globe for streamed sporting fixtures throughout the sporting calendar. Many athletes and sportspeople start training young and access to state-of-the-art training facilities is a top priority for sports coaches.

Turfgrass is hugely advantageous for sports ground areas for many reasons, such as long-term utility and maintenance costs. Grass fields require diligent, costly lawn care and unsavoury rodent prevention, whereas turfgrass requires low maintenance debris cleaning and edge-growth removal. Beyond the easy maintenance, the quick-drying turf allows for more playtime in real-time, with cutting-edge drainage systems and no cancelled matches due to muddy conditions. Playing on turfgrass is an altogether smoother, dryer and safer experience for the next generation of football players and athletes.

Introducing the Eco Clipper FM4 Sports from LS Products BV- ideal for sporting grounds, with its

accentuated smooth cutting decks with fast rotating small blades, ensuring a high quality of cut and a good distribution of the clippings.

Wet weather forecasted? Don't worry: the clippings are also well spread in wet grass, which makes it possible to operate the mower almost independently during all weather conditions, even adverse ones. The electrically-driven blades, ensure a quiet, economical operation. In addition, the large wheels and clever deck linking system provide good contour following and enable high mowing speeds. The EC-FM4 Sport is a 4.11m wide mower has four independent cutting decks and the forward position provides excellent visibility and comfort for the tractor operator.

LS Products BV is the proud manufacturer of the next-generational Eco Clipper electric mower system, perfected for the turf grower and sports turfgrass industry since 2018.

The Eco Clipper® Mowing System offers many advantages over traditional cylinder and rotary mowers, due to the superior, independently suspended 106cm wide deck section. It is cleverly linked together in larger, flexible contour following mowing decks. The entire design and development of the Eco Clipper® Mowing System delivers a clean cut, even clippings dispersion and excellent following of the ground contours with minimal soil compaction.

The mowing system also adapts to bespoke requirements so customers can attach the decks to different frames: including Carried or Towed. Offering three options, the Front Mower consists of a single deck with two-six sections, a Towed Mower consists of three separate decks of 10-14 sections wide, and a

Carried Rear Mower is combined with a Front Mower and consists of 10-14 sections wide.

The Eco Clipper range offers precision contour following, with the added feature of dispersing clippings, even on wet grass! With The Met Office noting that even last Summer was wetter than average, the Eco Clipper is good news for all sports turfgrass managers or turfgrass farms across the country.

The electrically-driven mowers use an intricate special mowing deck design that incorporates small mowing blades and the high-speed mowing system ensures higher productivity. Furthermore, the small blades and electric guarantee fuel efficiency, a factor welcomed by many during the continuing cost-of-living crisis. What's more the quiet noise levels of the machine keeps sounds to a minimum, ideal for school, college or university environments during lesson times and exams.

The Eco Clipper® Mowing System was the brainchild of Dutch inventor: Syb Leijenaar. The design cleverly evolved from the mowing system originally used on the family turfgrass farm of the Leijenaar family in the Netherlands back in the 1990's. Over the following decades, the design was part of an extensive R&D process and then in 2019, the Eco Clipper range was introduced to turfgrass farmers across the European continent. During the following year, the 14.11-meter-wide Eco Clipper: RM14 Butterfly Mower





and the Eco Clipper TM14 tri-deck mower were both highly successful signature mowers for the turfgrass growers and sports ground sectors.

We caught up with inventor extraordinaire: Syb Leijenaar to find out more about this innovative mowing system, set to revolutionise the turfgrass industry:

“The Eco Clipping mowing system is distinguished from other mowing systems by low energy consumption, low noise and good dispersion of grass clippings even when the grass is wet and high possible mowing speeds. It is also easy to operate and requires little maintenance.

Due to the cost-of-living crisis, the last 12 months have been slower business-wise, although business has been picking up again since the summer months. As an experienced, agile company, we have wisely used the opportunity to spend more time on new developments.

Our current developments are mainly focused on autonomous large area mowing. Our autonomous mowing system will be introduced in the coming year. We offer a 309 cm or a 513 cm wide Eco Clipper mowing deck. The power comes from either a diesel

generator or a 61 kWh battery pack. With the battery pack, the system can power for 20 to 25 hectares before recharging again. This makes an interesting combination with charging the battery with solar energy during midday hours.

We are keen on increasing productivity in large area quality mowing and hence lowering the mowing costs for our customers. For the specific target groups like turfgrass growers and sports ground managers, we already have the most productive equipment in the market, due to the large cutting width and high possible mowing speeds.

For the autonomous mower it is important that it can be operated safely without immediate supervision, to save labour. Therefore we have partnered with a Danish firm that fully focuses on safe operation of autonomous equipment in the field.”

The new Eco Clipper Autonomous Mower, will be trialled with selected farms during 2024 and uses three different types of obstacle detection: camera, lidar and radar for safety across dusty environments.

The new Autonomous range runs at speeds of up to 16km/h and surpasses all safety standards with its cutting-edge obstacle detection technology.

“2024 will see the introduction of the autonomous mower on a couple of carefully selected farms. We want at least a year of real-life experience before we will introduce these systems to a wider audience.

We expect to grow gradually in the sports ground market in the coming years. We have received wonderful, positive feedback from our existing users. They like the capacity, quiet running and economic use of fuel. Everyone who needs to replace old mowers should consider an Eco Clipper.”

From training the next generation of best sportspeople, to maintaining turf farms, the Eco Clipper range has something for everyone, throughout all the seasons, including rain. We asked Syb on how it felt to be selected for our Landscaping Company of the Year,

“I feel honoured to be selected for the award. When you work with these products every day you no longer notice that they are different. The award reminds us that we stand out. We are immensely proud of that.”

**For more information, on the full Eco-Clipper range please see the website below:**  
[www.ecoclipper.com](http://www.ecoclipper.com)

# WBS: Let's build a Wall Bed together

In this issue of Building & Construction Review, we are honoured to select Wallbed Systems for demonstrating Commitment to Excellence throughout the wall bed hardware design industry.

For hotel, hospitality or commercial spaces looking to maximise interior spaces, wall beds offer ingenious, creative design solutions. Wallbed Systems Ltd is a leading UK business, with a global outlook, offering smartly concealed sleeping areas for optimised and multipurpose living.

The London-based company designs, manufactures and distributes in-house wall bed ranges and related hardware kits, including bed frames in all standard sizes and the indispensable mechanism to perfectly balance the safe opening and closing of the bed. Wallbed System's Managing Director, Jeremy Waller has previous considerable expertise selling beds and mattresses across the Asian continent. This opened his eyes to the global sales potential of wall beds but with the added benefit of comfortable mattresses, for a perfect night's sleep, as Jeremy explains,

"Many wall bed designs have traditionally used gas lifts- similar to ones you have on the car tailgate. We decided to design our own springs, when we started nearly 20 years ago and have since produced over one million springs to date. These springs are intrinsically durable, offering vastly improved longevity.

Due to the nature of our signature spring system, our wall beds can cope with heavier loads and



larger mattresses, including the heavier hybrid designs used increasingly today, with high density foams and smaller pocketed mattress springs. This means there is never a compromise on comfort, whether you are using a wall bed in a five-star hotel, at home for guests, or just want to free up space in a bedroom. The adjustability of the load capability, by easily adding or taking away springs to match the loading, allows precise balancing of significant loads.

Our wall beds can be seen in many five-star hotels, Airbnb's, furnished and unfurnished property developments, student accommodation and luxury residences around the globe."

The hardware is cleverly adapted by adding different cabinet designs and materials to a basic dimensional design, allowing ongoing customisation. The team at Wallbed Systems have more than 3000 kits in stock at any one time and can ship any quantity ordered quickly via pallet or container worldwide, when required. The secret to the success of Wallbed Systems is designing kits for specific sectors, from smaller cabinet makers, furniture producers or freestanding wall beds direct to customers, using clever engineering expertise.

"We hold and can supply developers and designers with an array of cabinet designs for them to draw from and be inspired by based

on our current portfolio of wall beds installed around the world: designs can be made available showcasing wall beds in Europe, Japan, Australia, the UAE and India and elsewhere. These show the range of materials used in cabinetry, highlight our range of additional accessories and showcase the unlimited possibilities to add to our basic module so that they can create unique end products to reflect local preferences and project requirements. Our clients spread across 20 countries demonstrate a wealth of innovation and of who are content to share ideas and pool creativity with one another," added Jeremy.

Wallbed Systems Ltd. were able to remain busy during the COVID-19 global pandemic since many domestic customers had the reflective downtime to transform spare rooms as well as with the hospitality sector being forced to redefine and redevelop interior spaces during the working from home and staycation phenomena. With the factory capability recently upgraded, the Wallbed Systems production team were able to meet soaring demand, during this challenging time.

Whilst lockdown restrictions have since been fully lifted, the cost-of-living crisis has now instead taken centre-stage, impacting many businesses and sectors around the world.

"Last year we maintained our sales growth and





while this year is not looking quite so strong, we are in fact continuing to expand our footprint more widely across the globe.

Product development has now regained impetus and we have numerous product developments underway to add to the range from 2024. The most important shift has been the mantra we developed three years ago, namely to 'democratise' wall beds, in other words, to make them more accessible.

In everyday terms, this has meant analysing costs, but also recognising that cabinet cost and installation were factors often out of our control, and largely dictated by traditional approaches in an industry which had not really changed since the wall bed was invented early in the 20th century," explained Jeremy.

The original wall bed models came from the USA over one hundred years ago and Wallbed Systems has gone to great lengths to balance tradition with innovation as Jeremy outlines,

"There has been innovation of course, but change has been slow and our newer designs

opened the way to a more maverick approach: to re-evaluate the cabinet designs, the materials, and the way they are sold. Traditional thinking is always a challenge to real innovation – we are all guilty of not wanting change, but we need to embrace it fully, which we have tried to do. One of the hardest things is to implement change in an industry and to overcome tradition. It means understanding associated industries including: engineering, manufacturing, and the whole bedding industry. Trial and error can be frustrating and we have to get better at accepting design failure and then successively adapting it."

The future looks bright for Wallbed Systems, with travel restrictions now being fully lifted across the globe, allowing for fruitful face-to-face client meetings to begin again. Though Zoom and other technological advancements have their place, Jeremy and his team prefer the more traditional in-person visits, which offer a wider customer service experience.

"We are regarded as a major player in the hardware sector, and we don't want to divert too far from our core skills. It is a fragmented and a niche market and one that needs global coverage

and we have made some significant marketing investments in helping reach these new markets, as we have lots of opportunity for growth.

We strive for excellence with everything we do: many of our partners and clients have been with us now for approaching 15 years, and we have a high level of mutual reliance and support. There is nothing like a client providing positive feedback about something we have done, or our responses. I try and respond personally to enquiries, to better understand a client's aims and needs, and find a solution that works for them. I find investing time in this sets the scene for a longer relationship. Being able to respond quickly to requirements of some urgency is also something our team do well, throughout our supply chain."

For more information on the full product range and cabinet designs or to contact Jeremy Waller directly, see the details below:

**T +44 (0)208 704 5796**  
**T +44 (0)7780 661958**  
[jeremy.waller@wallbedsystems.co.uk](mailto:jeremy.waller@wallbedsystems.co.uk)  
[www.wallbedsystems.co.uk](http://www.wallbedsystems.co.uk)



# Providing passionate, innovative flooring for over a century



wide range of services/products tailored to meet the specific needs of our clients. We have a global presence and provide products and systems for installing, renovating and maintaining floors. Our passion is delivering solutions that keep floors beautiful and functional year after year, throughout the life of the floor. We pride ourselves on delivering high-quality solutions that exceed customer expectations. We are keep asking ourselves the question, "How can we further help bring out the beauty in floors?" - which acts as a daily motivating push towards even greater innovation. Through the three tenets of: inspiration, devotion and pride, we are driving premium quality with the latest technology, and always with a promise of sustainability."

Bona is synonymous with premium quality, providing game-changer products across the flooring industry. Professional craftsmen, industrial customers and floor owners always know what that they are getting with industry-leading Bona products, with every trusted application. From installation to renovation, to maintenance and care, Bona are leading advocates for expert, premium, sustainable solutions that empower customers to safely achieve the best performance and results for floors.

"For the past 100 years and into the next 100 years, Bona is committed to innovation. When we're met with a challenge, our talented team gets curious and creative to find a fix that remains true to our commitment to sustainability, and is aligned with our promise to deliver the best products, solutions and systems in the industry. We believe that these qualities set us apart from others in the industry and contribute to our success," added Leanne.

Since 1919, Bona has had a creative, fresh evergreen focus embedded in its company

In the issue of Building & Construction Review, we are delighted to select Bona with our end of year commitment to excellence, for providing premium flooring services and products and high-quality training courses for professionals.

Multi-Award-winning Bona AB provides globally-leading, premium products for installing, renovating, maintaining and restoring premium floors including: wood, tile, stone, vinyl, resilient, rubber, parquet and laminate.

Wilhelm Edner first established Bona back in 1919 in Malmö, Sweden and over a hundred years' later, the company is still pushing boundaries in the hardwood floor sector. The fourth generation of the Edner family continues Wilhelm's proud legacy today, from the original Malmö headquarters. Bona works across 17 subsidiaries, 70 distributors,

five factories and 600 employees and is highly renowned for high-quality products and exceptional customer service. The UK Milton Keynes distributor base, has doubled capacity over recent years and a new, state-of-the-art warehouse facility has helped further with growing capability.

We spoke to Bona's UK Marketing Manager: Leanne Garvie to find out more,

"The main role of our company is to provide innovative solutions in the flooring sector. Our values of passion, performance and pioneering are present in everything we do. For over a century, Bona has been at the forefront of innovation, engineering, pioneering, and perfecting a complete system to create and maintain long-lasting floors that stand the test of time. Our company offers a





best practice. What 100 years of committing to sustainability has shown is that it is an ever-evolving paradigm. Rather than a destination, it's a multifaceted journey that changes as our world changes. Developments in technology, new innovations, and cultural shifts are all part of how Bona continues to create a better world.

Bona's historical credentials on sustainability are impressive and heartfelt: from pioneering 1970's practices such as removing toxic and hazardous chemicals from hardwood floor finishes and alternatively providing water-based finishes through to dust containment systems. The systems removed cancerous carcinogenic wood dust from the air during the hardwood floor-sanding process, protecting both workers' health and the local environment.

It comes as no surprise then, that Bona received the prestigious the U.S. E.P.A's Safer Choice Partner of the Year Award this year, for the third consecutive year running. This award honours the contributions of Safer Choice Partners and Stakeholders who have demonstrated outstanding achievement in the design, manufacture, selection and use of products with safer chemicals. That's not all: Bona Germany was awarded the BSFZ-Seal for innovative companies by the German Ministry for Education and Research for three of its innovative and groundbreaking R&D adhesive projects.

With sustainability on the agenda for many companies across Europe and further afield internationally, Bona has invested in its first electric, Scania truck (E-truck) for the Limburg facility in

Germany. The truck is fuelled by green electricity, powered from the facility's solar panels. Elsewhere, Bona has ploughed SEK 4.5 million into a Geothermal energy system for the production unit in Malmö, Sweden. Geothermal energy has been hailed by many industry insiders as an infinitely, renewable resource and going forward offers a robust alternative to damaging fossil fuels.

Sustainability is also the thread running through the innovative product range and Bona is delighted to introduce its latest offering: Bona Traffic GO, free from isocyanate and PFAs. The next-level 2K lacquer provides the latest advancements in curing technology and is now available to order from UK distributors. Available in 1 Litre or 5 Litre containers, the lacquer requires no prior mixing, simply a handy 'shake & go' formula. The built-in hardener is activated when applied, perfect for heavy foot traffic areas in commercial and domestic flooring areas.

With a EC1 Plus certification, the GEN-EMICODE® offers very low emissions and is another welcome product from the global trailblazers. There are multiple reasons why we selected Bona for our 2023 end of year commitment to excellence: these include an outstanding commitment to sustainability best practice and products over one hundred years, premium quality, trusted products in the flooring industry and a wide range of training and development opportunities to

flooring craftsmen through Bona's training centre. The new training centre was opened in early 2023 and provides three levels of training: Bona Certified Contractor scheme, Bona Sand and Seal Training, and Bona Resilient Floor System Training. The courses are aimed at flooring professionals but also Bona Distributor staff, to help give them a greater understanding of the Bona range.

Since the first quarter of the 20th century, Bona has been a ground breaker across the flooring industry, with unwavering dedication to sustainability and innovation. We asked Leanne how it felt to be selected for our 2023 end of year commitment to excellence,

"Commitment to excellence is at the core of everything we do as a company. It means consistently striving for the highest standards of quality, innovation, and customer satisfaction. We achieve this through a combination of rigorous quality control processes, ongoing training and development programs for our team, and a genuine dedication to exceeding customer expectations."

For more information on Bona's sustainability track record, product range and training centre dates, see the website below:

**T 0190 852 5150 / 0794 055 4467**  
[info.uk@bona.com](mailto:info.uk@bona.com)  
[www.bona.com/en-gb/professional/](http://www.bona.com/en-gb/professional/)



# Hebridean housebuilder specifying SterlingOSB Zero on sustainability grounds

Situated seven degrees west of the Greenwich Meridian, and exposed to some of the harshest weather conditions anywhere in the British Isles, the Hebrides present a challenging location for building projects, prompting a recently-established building company to adopt offsite construction technologies which make full use of the technical and environmental benefits of West Fraser's SterlingOSB Zero.

70-22' Systems was established in 2022 by three business partners whose experience encapsulates architecture, education and manufacturing amongst other skills, and who decided to develop their own highly-insulated, modular timber building system. Growing organically by providing bespoke packages to clients of parent business, Fraser Architecture, 70-22' has already delivered properties on the Outer Hebrides; and has more than half a dozen schemes of different sizes in the pipeline for the coming year.

The trademarked system has been designed specifically to avoid the need for craneage, due to the inaccessibility of many sites, while the cellular component modules take the form of wall blocks, lintels and beams to span larger openings. The SterlingOSB Zero is CNC machined and assembled in the workshop before being filled with Warmcel recycled paper insulation.

Significantly, the 70-22' Systems design personnel were determined from the outset to utilise the West Fraser board because of its formaldehyde free formulation

and the fact the material is manufactured in the North of Scotland, using mainly locally sourced softwood from well managed forests.

70-22' Systems' co-founder and Commercial Director, Alex Durie, commented: "We use West Fraser's SterlingOSB Zero to construct our ecological building components, that are prefabricated in our workshop utilising CNC technology to achieve 0.1mm tolerances for each beam and block. It is the ideal material to use as the shell for our components, which are then filled with recycled insulation to achieve a building system that can achieve market leading thermal performance, with a U-value of 0.1 W/m<sup>2</sup>k, and excellent airtightness, while maintaining a breathable floor, wall and roof construction.



The added bonus of being formaldehyde-free, OSB enables us to build ecologically, utilising timber grown and processed in Scotland as we aim to limit the travel miles in each of our builds. The OSB produced by West Fraser has performed very well in our structural testing, with our system proving to be 1.6 times stronger than a traditional timber frame – and as our system arrives on site as a component that is pre-fabricated, pre-insulated and designed for manual handling, it is much quicker to assemble."

Not only do all of the 70-22' Systems structures exceed the thermal requirements of Section 6 to the Building




Standards, Scotland, but can also be delivered as a Passivhaus compliant solution where the client or planning consent demand it. In the medium to long term, the business is building a pattern book of standard house types and has plans to establish a pilot plant on the mainland. The company will also be showcasing its system at the Self-Build and Renovation exhibition in Aviemore this autumn.

SterlingOSB Zero is available in a range of sizes and thicknesses up to 22mm as well as a T&G version ideal for flooring and decking applications. The high performance panel product, free of added formaldehyde, has also earned BBA approval and meets the requirements of NHBC Technical.

As is always the case, West Fraser's experienced technical team is available to aid with product specification, while downloadable data sheets are available at <https://uk.westfraser.com>

For further information, call 01786 812 921 or visit <https://uk.westfraser.com/>




## BESPOKE CRETE

All handmade in the UK & built to last

### MICROCEMENT BESPOKE CREATIONS

BespokeCrete creates beautiful, elegant and unique furniture, kitchen worktops, outside kitchens, sinks, baths and totally bespoke items that are made to order. Microcement is applied by hand and consists of primers, base coats, mesh, Microcement coats and sealers - creating a fully waterproof, stain, scratch and heat resistant surface. Perfect for indoor and outdoor use.



Please feel free to send us a message so we can make your design idea a reality.  
 08000614157 [info@bespokecrete.com](mailto:info@bespokecrete.com) [www.bespokecrete.com](http://www.bespokecrete.com)

## BespokeCrete

BespokeCrete creates custom and bespoke furniture, outdoor kitchens, kitchen worktops, waterfall islands, patio sets, indoor table & bench sets, coffee tables, baths, sinks and so much more. Every item is custom built, by hand - using local materials and trades, in our Norfolk workshop. BespokeCrete crafts furniture from wood or steel - that is coated in our full Microcement system, over several days - creating a strong and fully waterproof surface that is heat, stain and scratch resist.



it in Microcement - creating a personal and unique piece of art/ furniture.

With our team of in-house steel fabricators and master carpenters - we can bring our customers design concepts to reality. At BespokeCrete - we have a range of stunning furniture or we can create a completely bespoke design of your choosing.

Bespokecrete work with designers, architects, contractors and the general public with a large proportion of our work being completely bespoke. Microcement is available in a multitude of colours - now with the option to colour match to RAL, Farrow & Ball, Dulux, Little Green, Fired Earth and Pantone colours. For more information, see below.

Microcement is a thin 2-3mm cement and resin hybrid coating that can be applied to a multitude of surfaces. It is great for inside or outside use, creating stunning furniture from wood and coating

**T 08000614157**  
[info@bespokecrete.com](mailto:info@bespokecrete.com)  
[www.bespokecrete.com](http://www.bespokecrete.com)

# Temporary Catering facilities for use during Kitchen refurbishments



**Mobile Kitchens Ltd specialises in the hire of temporary catering facilities and foodservice equipment.**

Ideal for events or to provide temporary catering facilities during your kitchen refurbishment, our versatile units and equipment offer an efficient and economical solution to the caterers' needs.

Production Kitchens, Preparation Kitchens, Warewashing Units, Dry Store Units, Cold Rooms and Restaurant Units are available as individual units in their own right or they can be linked together on-site to form a complete complex.

Alternatively, we can offer modular, open-plan

facilities, usually for larger, longer-term hires. We offer a free design service, and project management from concept through to delivery and installation on-site, plus full technical support throughout the hire period.

The standard specification of our Medium Production Kitchen unit includes a six-burner oven range, salamander grill, twin basket fryer, undercounter fridge, undercounter freezer, hot cupboard, double bowl sink unit with integral hand wash basin, storage racking, plus ample power points to plug in Microwaves, Food Processors, Toasters etc. Internal equipment can be interchanged, and clients can effectively specify their preferred layout. We have many tried and tested design layouts and would be pleased to put forward our

recommendations for your project.

So, if you're planning a refurbishment or need to cater for an event then why not give us a call and we'll be happy to provide advice and put forward a competitive proposal.

**For further information or to arrange a site, please visit, email: [sales@mk-hire.co.uk](mailto:sales@mk-hire.co.uk) or call us on: 0345 812 0800 or visit our website: [www.mk-hire.co.uk](http://www.mk-hire.co.uk)**

## TIMBER GARDEN BUILDINGS



**GARDEN OFFICES  
TIMBER GARAGES  
WORKROOMS**



**WARWICK BUILDINGS**

**NIGHTINGALE LANE  
LONG ITCHINGTON  
SOUTHAM  
CV47 9AT  
01926 815757**

**'Quality Timber Buildings For All Your Needs'**

[www.warwickbuildings.co.uk](http://www.warwickbuildings.co.uk)



# QUADRABUILD

A reliable friendly company providing innovative solutions to the construction industry for both new-build and remedial situations from small residential extensions to large commercial projects

## Helical Pile Foundations

- Ideal for residential extensions
- Overcome heave from clay soil
- Installation near protected trees
- Small equipment for restricted access sites
- Test logs for Building Control
- Minimal disruption
- Clean, fast and efficient
- No spoil removal
- Designed and made in the UK
- Technical design service available
- Also suitable for up-rating existing foundations as a quick and less intrusive alternative to underpinning



## Access Ramps

- A high-quality modular metal ramp system
- Ideal for both permanent and temporary access
- Compliance with requirements for able-bodied and disabled users
- Suitable for both residential and public locations
- Full survey, design and installation service
- Numerous step, ramp and platform combinations
- Associated work such as paving and landscaping



## Structural Repair of Masonry

- Survey, design and installation of solutions for repair of masonry structures (brick, block, stone)
- Utilising stainless steel helical reinforcing bar and cementitious grout
- Cracked walls and buildings
- Failed lintels and arches
- Failed foundations

We cover the whole of the South, South-west and South-east



Contact QuadraBuild to discuss your requirements:

02086 445 434

[sales@QuadraBuild.com](mailto:sales@QuadraBuild.com)

[www.QuadraBuild.com](http://www.QuadraBuild.com)

Unit 1 Falkland Farm, Andover Road, Newbury, Hampshire/Berkshire, RG20 0LP

# Premium Shou Sugi Ban® Timber Cladding

Sustainable, low maintenance and stunning; it's no wonder that architects specify Shou Sugi Ban® timber cladding for contemporary builds and heritage renovations.

Traditional Japanese timber homes were preserved using a charring technique called Yasisugi. The process blackens the wood and increases its resilience to weather, insects, flames and mould. When we first discovered this, our team were keen to master the process and develop a premium timber cladding range.

Shou Sugi Ban® is manufactured by hand in our Buckinghamshire workshop.

Not all charred timber is black. Our skilled team brush, char and finish FSC® certified timbers to create a highly desirable selection of cladding including:

- ▲ Lightened timbers including Kebony Legima
- ▲ Tinted timbers including Tobu Accoya
- ▲ Enhanced grain wood including Larch Shiberiatora



See the full range on our website: <https://exterior.supplies/charred-timber-cladding>

Suitable for and interior use, Shou Sugi Ban® offers a classic, timeless aesthetic. It complements other construction materials and helps a building to blend into its surroundings. It's little wonder that this premium timber cladding is specified for RIBA award-winning properties and historically sensitive renovations!

Please get in touch with Exterior Solutions Ltd for further information, quotes and samples.

T 01494 711800  
<https://exterior.supplies>

# ESP Panels extends the life of panel products

There has, up until now, not been a product that solves the problem of water penetration to the inner veneers of plywood which when wet cause the glue-line to fail. Following successful testing by BM TRADA we now have that product. Specifiers and architects can now once again have confidence in softwood plywood and panel products. No longer do you need to specify the more expensive hardwood marine grade ply. Simply apply ESP Panels and confidence can now be restored.



ESP Panels extends the life of panel products by creating a watertight seal around the edge of the boards, stopping moisture penetration to protect against delamination.

Ideal for external use and high-humidity areas. ESP is proven to make plywood last longer. The Plywood Sealant is applied to the bare edges (including freshly cut edges) of the plywood boards. A thick layer is painted down the edge with a 5mm overlap onto the flat surface. Ensure that any holes or air

pockets are completely covered. This can be done by working the sealant along the edge, back and forth with a paintbrush.

Available in all good Timber Merchants or contact us today if you too would like to become a stockist.

Contact details:  
[sales@esp-timbertreatments.com](mailto:sales@esp-timbertreatments.com)  
[www.esp-timbertreatments.com](http://www.esp-timbertreatments.com)



**HYDRO HEATER**  
HEAT YOUR HOT TUB IN UNDER AN HOUR!\*

**PORTABLE RAPID WATER HEATER**

**FEATURES INCLUDE:**

- From 5.5p per kWh\*\*
- Heats 20x faster than typical 3kW electric spa
- High efficiency 60kW diesel boiler
- Compact portable unit
- Runs on diesel or kerosene

Manufactured in Britain, UKCA/CE Complies with UK and European health, safety and environmental protection standards.

\*In tests the Hydro Heater heated a 1200L spa from 8-40°C in 45 mins (ambient temperature 15°C)

\*\*Operating cost based on Kerosene 28 (heating oil) at £0.77/L. Price correct at time of printing 7/10/23 (source: boilerprice.co.uk)

Please contact  
[info@hydro-heater.co.uk](mailto:info@hydro-heater.co.uk)  
0203 457 0343 / 07968 962 659  
[www.hydro-heater.co.uk](http://www.hydro-heater.co.uk)

# Hydro Heater's



Hydro Heater's brand new portable rapid water heater can heat hot tubs, pools and any contained water volume in record time.

The revolutionary new heater is particularly well suited to holiday park, holiday let and glamp site operators who have hot tubs as part of their offering.

The Hydro Heater's one hour heat up time now enables operators to drain, refill and reheat their hot tubs within a short time window, thus ensuring that their tubs are hot and ready for customers to enjoy as soon as they check into their accommodation later the same day.

product quality manager at Forest Holidays, taking delivery of 10 Hydro Heaters at their site in Keldy, North Yorkshire. The introduction of the Hydro Heaters will mean substantial savings in time and energy costs to the tune of tens of thousands of pounds per year on each of their parks for the company, a certified B Corporation. Not to mention the smiling faces of guests who can enjoy their hot tub as soon as they arrive!

The Hydro Heater's 60kW output will heat a hot tub 20 times faster than a typical electric heater, with operating costs from 5.5p per kWh.

For more information:  
T +44 (0) 203 457 0343  
[www.hydro-heater.co.uk](http://www.hydro-heater.co.uk)

Pictured with Hydro Heater Managing Director David Donald is Ryan Birchall,

# Sustainable Solutions: It's time to make the switch



As the world continues to grapple with the effects of climate change, it's essential that we take firm steps to reduce our carbon footprint. One of the most impactful changes that can be made in both the building and landscaping industries is to switch to eco-friendly, low-carbon, maintenance-free solutions.

### Eco-friendly products that last a lifetime

Recycled plastic materials offer a number of advantages over traditional wood and metal solutions. Recycled plastic is far more durable than wood, and will never rot or corrode over time. It's also easier and faster to install, often coming pre-cut to size and ready to assemble. In terms of eco-friendliness, recycled plastic is an excellent choice for both building and landscaping. It's completely recyclable, meaning that it

can be recycled and reused many times.

### Kedel: A commitment to sustainable living

Leading the charge for more sustainable recycled plastic products is Kedel, a family-run business based in Burnley. With a mission to display the very best in recycled plastic materials, Kedel puts eco-friendly living at the heart of its business, recently working with the National Trust. From recycled plastic decking boards, fencing and cladding to outdoor furniture and building materials, their low-maintenance, affordable alternatives are designed to promote greener living.

T 01282 861325  
info@kedel.co.uk  
www.kedel.co.uk



# Commissioning Tree Information for planning, in line with BS5837:2012 (RIBA) Plan of Work (2020)

Barnes Associates Ltd are leading tree surveyor helping architects and developers with their schemes. Tree surveys to BS5837 are our speciality. We provide high quality arboricultural impact assessments and Tree Protection Plans.



plans with liaison with ecologists. We can provide tree planting and landscape schemes as well.

Arboricultural method statements are regularly a conditional item, we liaise with developers to ensure storage areas and facilities on-site can be practical whilst still protecting trees.

Often further investigation is required to find out where tree roots are – we provide Tree Root mapping (Tree Radar) services throughout the UK too.

We problem solve so building near trees is possible. Regardless of their protected status, all trees can be a material consideration in a planning application. To ensure a smooth passage through the planning process, you and your design team will need information in line with British Standard 'Trees in relation to construction - Recommendations' BS5837:2012, the national standard for the management of trees on and close to the development, redevelopment and building sites.

Works are done in stages initial assessment/development windows. We provide tree constraints plans in CAD 2D and 3D. Tree retention and removal

Contact Sue Barnes, Director & Landscape & Arboricultural Consultant,  
T 01423 322371  
info@barnesassociates.co.uk  
www.barnesassociates.co.uk  
(Tree Surveyors/Risk Assessors)  
www.treediagnostics.co.uk (Hi-tech Equipment sales/Arb Training)  
https://academy.treediagnostics.com (E-Learning/Training)

The  
**Glass  
Balustrade  
Company**

GET A FREE CONSULTATION!  
**01746 763477**  
WWW.GLASSBALUSTRADECOMPANY.CO.UK

## HIGH-QUALITY GLASS BALUSTRADES, JULIET BALCONIES, STAIRCASES & CANOPIES

Our bespoke glass balustrades and Juliet balconies are designed to offer both elegance and functionality. With years of experience in supplying and fitting ornamental and glass balustrade systems, steel staircases, glass canopies, and architectural metalwork, we are dedicated to providing a quality product at a competitive price.



OVER 40 YEARS  
OF EXPERIENCE



BEST INDUSTRY  
EXPERTS



BESPOKE  
DESIGNS



ON TIME ON  
BUDGET



## Peace of mind for your park and leisure home

- Surveys & Inspections
- Annual Service Plans
- Interior Finishing (post sitting)
- Aftersales works
- Refurbishment works



Tel: 01509 807115  
Email: info@clearviewphs.co.uk  
Web: www.clearviewphs.co.uk

# Eco Clipper FM4 Sport for sporting grounds

Eco Clipper offers large area mowers that help field managers minimise mowing costs while producing a professional cut. The Eco Clipper mowing system was originally developed to replace the cylinder mower in turfgrass production. The aim was to retain the cutting performance of a well-tuned cylinder mower, but not the high maintenance requirements and sensitivity to mowing conditions, such as wet grass and weeds.

### The system

The smooth cutting decks with fast spinning small blades ensure a high quality of cut and a good distribution of clippings. Even in wet grass, the clippings are well distributed. This makes it possible to schedule this mower almost independently of the weather.

Thanks to the electrically driven blades, the mower



is very economical and quiet. The large wheels and smart mower deck linking system ensure good contour following and enable high mowing speeds.

Municipalities and sports field and park managers have also discovered the advantages of the Eco Clipper mowing system. For them, Eco Clipper offers the EC-FM4 Sport. This 4.11m wide mower has four independent mowing decks. Its position in front of the tractor provides excellent visibility and comfort for the tractor driver.

### The benefits

Users report high productivity gains, a factor two compared to 5-gang self-propelled cylinder mowers, and appreciate the low maintenance need and the ability to schedule the mowing even in less favourable mowing conditions, such as early morning dew and wet autumn.

For more information, contact:  
[info@vanmac.co.uk](mailto:info@vanmac.co.uk)  
[www.ecoclipper.com](http://www.ecoclipper.com)

'Get started saving today by mowing your sports grounds with Eco Clipper'



Eco Clipper FM4 Sport  
 for Sports Grounds  
[www.ecoclipper.com](http://www.ecoclipper.com)

**Eco CLIPPER**



# At last **non-combustible** decking that actually looks like wood

---

**TerraSmart®** Vitrified Composite™ is the non-combustible decking of choice, expect unrivalled beauty, design flexibility, and a stunningly realistic hard-wood finish.

[www.rynogroup.co.uk](http://www.rynogroup.co.uk)



# Quality bespoke joinery – crafted to perfection



Bluerun manufactures quality, bespoke joinery items and everything is made to order, nothing is 'off the shelf.'

If you're looking for items made from both hard and softwood or even veneered and painted panels, Bluerun can reproduce an array of items including replacement sashes, where it can manufacture a brand new one on a like for like basis, so the mouldings will match.

Bluerun only produce purpose made joinery to client's drawings and specifications. Its unrivalled level of customer services means that free quotations are normally provided within 2-3 days or less, and the company can usually deliver a quick turnaround of any manufactured items required. And, because it has an experienced spray operative in charge of a modern spray paint and lacquer facility, articles can leave the factory in a fully finished state, ready for installation on-site.

What really sets Bluerun apart is that since its establishment it has never used computer aided machinery for any designs. Crafted to perfection, all items are finished by hand, drawings are



prepared with pencil and paper, and everything that is manufactured by the team has been done so with the utmost attention to detail.

T 01799 599995  
[dee@bluerunltd.co.uk](mailto:dee@bluerunltd.co.uk)  
[www.bluerunltd.co.uk](http://www.bluerunltd.co.uk)



## Quality, custom made joinery



We provide a complete range of custom domestic and commercial joinery, internal and external: windows, doors, fitted furniture, gates, staircases, handrails, shop fronts and even wendy houses!

Contact us to discuss your requirements

☎ 01799 599995    ✉ [dee@bluerunltd.co.uk](mailto:dee@bluerunltd.co.uk)    🌐 [www.bluerunltd.co.uk](http://www.bluerunltd.co.uk)    📺 [bluerunltd](https://www.facebook.com/bluerunltd)    📷 [bluerun\\_joinery](https://www.instagram.com/bluerun_joinery)

# Do it the right way!

## Fire Retardant Treated Timber & Plywood

🔥 100% natural, non-toxic & bio-degradable

🔥 Approved decorative coating

🔥 Fire class B-s1, d0

🔥 DRF Class EN 16755:2017



For further information, please call, click or visit:

WJ Group, 1A Main Street, Kirkburn, Driffield YO25 9DU  
T: 01377 796001 E: info@firewright.co.uk

[wj-group.co.uk](http://wj-group.co.uk)



**FireWright**  
WJ Group

## Sustainable Solutions: It's time to make the switch

As the world continues to grapple with the effects of climate change, it's essential that we take firm steps to reduce our carbon footprint. One of the most impactful changes that can be made in both the building and landscaping industries is to switch to eco-friendly, low-carbon, maintenance-free solutions.

### Eco-friendly products that last a lifetime

Recycled plastic materials offer a number of advantages over traditional wood and metal solutions. Recycled plastic is far more durable than wood, and will never rot or corrode over time. It's also easier and faster to install, often coming pre-cut to size and ready to assemble. In terms of eco-friendliness, recycled plastic is an excellent choice for both building and landscaping. It's completely recyclable, meaning that it can be recycled and reused many times.

### Kedel: A commitment to sustainable living

Leading the charge for more sustainable recycled plastic products is Kedel, a family-run business based in Burnley. With a mission to display the very best in recycled plastic materials, Kedel puts eco-friendly living at the



heart of its business, recently working with the National Trust. From recycled plastic decking boards, fencing and cladding to outdoor furniture and building materials, their low-maintenance, affordable alternatives are designed to promote greener living.

T 01282 861325  
[info@kedel.co.uk](mailto:info@kedel.co.uk)  
[www.kedel.co.uk](http://www.kedel.co.uk)



## Timeless, beautiful, sustainable

Highland Heritage Woodwork's 'Forest to Front Door' strategy of managing our raw materials from start to finish gives us complete control over the components we use in our projects. Our mission is to supply crafted timber products from local and sustainable sources that meet the demands of our customers, as well as providing long lasting functional beauty.

We have a passionate team of master carpenters who build timber frames as well as bespoke post and beam structures from local materials like Douglas Fir, Larch and Oak. We have the skill set and detailed craftsmanship to complete the internal joinery package too - staircases, furniture and bespoke cabinetry. Our high capacity sawmill and drying kiln means we can maintain consistent standards and speedy production, whilst our connections with Scottish foresters means we access the highest quality timber, sustainably.



### Contact us to discuss your project

[info@woodworks.scot](mailto:info@woodworks.scot)  
 07752 730 977  
[www.woodworks.scot](http://www.woodworks.scot)

Dairy Buildings,  
 Dunecht Estate, Aberdeenshire  
 AB32 7DD



## The Belgian fifth-generation family company, founded in 1883, Vandecasteele



Houtimport specializes in the import, trading and export of Tropical Hardwood from Africa, Southeast Asia and South America, Scandinavian and North-American Softwood, North American and European Hardwood.

Its experience and dynamism have made it one of the leading timber companies in Belgium. 20 Hectares of undercover storage stock 120,000m<sup>3</sup> of finely presented timbers, allowing to satisfy every order.

### Preservation of the forest

In a well-managed forest, only mature trees are harvested which amounts to one to three trees per hectare. After that, felling will not take place for at least 25 years. In this way the forest is preserved for the future.

### Rethink everything: a positive evolution in consumer purchasing behaviour.

Customers are increasingly seeking sustainable

solutions and are asking questions about certification and the origin of the timber. Buyers are becoming more and more aware of the need to use certified timber.

### Masters in diversification

Vandecasteele has a long-term commitment to preserving the forests. Therefore it is of vital importance to use a variety of different timber species.

The family business imports more than 130 different species of timber coming from 40 countries and has over 120,000 cubic meters in stock, mainly certified hard and softwoods.

### Strengths

The strengths of Vandecasteele Houtimport are the strong environmental credentials, the huge stock, the variety of timber species and sizes and the prompt delivery from stock.

[www.vandecasteele.be](http://www.vandecasteele.be) - Belgium  
[dave@vandecasteele.be](mailto:dave@vandecasteele.be)  
[genevieve@vandecasteele.be](mailto:genevieve@vandecasteele.be)



**VANDECASTEELE**  
 HOUTIMPORT



Specialist in large section timber,  
irregular sizes and long lengths.  
Sections 600 x 600 and lengths to 15m .

Planed, treated timber, railway  
sleepers, tile battens, arris rail, feather  
edge boards, telegraph poles, glulam  
and more .

# WARDELL

## LONG LENGTHS

Tel: 01469 532922

[info@longlengths.com](mailto:info@longlengths.com) [www.longlengths.com](http://www.longlengths.com)

# NeutraliZer™ CO<sub>2</sub> concrete washout solution

Developed by Smart Storm, The NeutraliZer™ is a unique, mobile, in-line treatment plant that uses only CO<sub>2</sub> to continuously neutralise concrete washout water.

## Concrete Washout

pH of concrete wash water from construction sites is highly caustic, posing environmental and legal risks if discharged with unacceptable pH levels.

Equally, this applies to concrete wagon washouts to sewer and surface drains.

This high alkaline wastewater is usually treated with hazardous chemicals on a batch basis.

## Smart Storm's In-line concrete washout treatment

The NeutraliZer™ works by monitoring the caustic washout with Smart Storm's USM pH meter, and based on these readings, carbon dioxide (CO<sub>2</sub>) is automatically dissolved into the wash water flow via Smart storm's USI (Smart Instrument) to reduce the pH to a safe level for discharge; all this happens on a continuous flow basis.

A flow meter monitors the effluent leaving the unit,



which can treat up to 25m<sup>3</sup> of wastewater per hour. CO<sub>2</sub> dissolved in water is slightly acidic so is ideal for neutralising concrete wash water.

The Neutralizer comes with an IOT remote monitoring system as standard so the user can monitor 24/7 the status of the pH balancing and show compliance with logs and graphs to regulatory bodies, such as the EA, Natural Resources Wales and SEEPA.

Available to purchase or hire; contact Smart Storm Ltd to find out more

T: +44 (0)1422 363462  
[www.smartstormgroup.com](http://www.smartstormgroup.com)  
[enquiries@smartstormgroup.com](mailto:enquiries@smartstormgroup.com)  
[smartstormgroup.com/industrial-neutralizer](http://smartstormgroup.com/industrial-neutralizer)  
 Neutralizer Short Video 2022  
[www.linkedin.com/company/2097214/admin/feed/posts](https://www.linkedin.com/company/2097214/admin/feed/posts)

## In-Line CO<sub>2</sub> pH Balancing For Concrete Washout Water!

- Mobile Skid
- Fully Automated
- Continuous In-line Process
- Low Operating Costs
- Rugged Construction
- Small Footprint
- No Hazardous Chemicals
- Plug & Go!



The Unique  
**'NeutraliZer'**  
 pH Balancing  
 Unit!

Treats and Balances  
 Highly Caustic  
 Wastewater  
 In-Line!

**Uses just CO<sub>2</sub>!**

Contact us to find  
 out more:-



Enquiries@smartstormgroup.com [www.smartstormgroup.com](http://www.smartstormgroup.com) T: + 44 (0) 1422 363462

# **KELLY** TANKS

**DEALING WITH WASTE  
WATER ONSITE?**

**KELLY TANKS PROVIDES**

**CONCRETE  
WASHOUT &  
WATER  
TREATMENT  
SYSTEMS**

**SO THAT YOU  
CAN EASILY  
RE-USE OR  
SAFELY  
DISCHARGE  
YOUR ONSITE  
WASTE WATER**



**WWW.KELLYTANKS.CO.UK | INFO@KELLYTANKS.CO.UK | +44 (0) 1889 508944**

# LSTA: Specialist Applied Skills Programme (SAP) Course

Places are available for the Lead & Hard Metals Specialist Applied Skills Programme (SAP) for the 22nd of January 2024. Candidates will achieve the following:

- ▲ NOCN Level 2 NVQ Lead & Hard Metals Roofing Operative & City and Guild Accreditation Traditional Intermediate Lead or Hard Metal craft. An 18-month programme with 7 weeks training split into 1-week blocks at the LSTA followed by an onsite assessment for NVQ.
- ▲ NOCN Level 3 NVQ Heritage Lead & Hard Metals Roofing Operative & City and Guild Accreditation Traditional Advanced/Heritage Lead or Hard Metal craft. Fully funded apart from £99.00 registration fee. An 18-month programme with 3 weeks training split into 1-week blocks at the LSTA followed by an onsite assessment for NVQ.

CITB funding is available for companies that are CITB Registered, for accommodation, food & travel through the CITB "Travel to Train" see link. 80% of the costs are covered through this scheme



[www.citb.co.uk/levy-grants-and-funding/grants-and-funding/apprenticeship-travel-and-accommodation-funding-travel-to-train](http://www.citb.co.uk/levy-grants-and-funding/grants-and-funding/apprenticeship-travel-and-accommodation-funding-travel-to-train)

Investing in the next generation of Lead or Hard Metal workers helps support your business success for the future.

Please call 01622 872432 / 07961 659802 or email Sharon at [info@leadsheet.co.uk](mailto:info@leadsheet.co.uk) for further information.

# Understanding SterlingOSB Zero

All West Fraser's Oriented Strand Board (OSB) products are manufactured using selected fibres of timber that are laid in cross directional layers and mechanically pressed to form a structurally-engineered panel, designed for construction and other industrial applications. OSB is viewed by many as the natural successor to plywood because it is more eco-friendly, is home produced and far more affordable, while it contains none of the voids or knots which have historically weakened plywood.

As the boards are essentially formed from individual strands of softwood, some may question their strength and durability, especially if exposed to inclement weather, but this is a misunderstanding of OSB's characteristics.

West Fraser's SterlingOSB Zero OSB3, for example, is BBA-certified, as well as approved for load bearing in humid conditions – being manufactured to EN300 and EN 13986. However, if being used outdoors for extended periods, it can be painted or varnished, plus it can also be treated to protect against fungal and insect attack.

Technological advances mean there is no need to sand OSB boards anymore, as West Fraser is now able to produce them to industry leading tolerances. The latest boards offer an exceptionally smooth



surface, making it an ideal substrate which is easy to work with.

If a floating floor is specified, the installer should ensure that battens for the substructure are appropriately spaced at 400mm centres beneath 15mm boards and up to 600mm for the 18mm version. SterlingOSB Zero boards come in both square edged and tongue and groove (T&G) format, which can be used for roofing and timber frame construction, as well as flooring – making the whole SterlingOSB Zero range infinitely flexible in use.

Check out the West Fraser housebuilders' page <https://uk.westfraser.com/housebuilders/> for useful downloads and product information.

For further information, call 01786 812 921 or visit [www.uk.westfraser.com](http://www.uk.westfraser.com)

CLIENTS INCLUDE

## CALLING ALL ARCHITECTS, LANDLORDS +more

- ✓ **Help your Client even more:** Great Advice built on 40+ yrs experience. . .  
... e. g. Rental Options; £13k pa rental > Could **earn £160k pa** income.
- ✓ ... e. g. Many more 'Onsite Income' ideas (speak with us).
- ✓ **Themed to your Venue/s :** Bespoke Styles & Systems, ANY Space or Shape!
- ✓ **Limitless Design :** Limitless Features, Colours and Styles.
- ✓ **Smarter Systems :** eg. Make the most of your space; especially height!

UK Manufacturer. All-in-House. + Best Value per capita!

**OUTDOOR**  
adventures

**TRAMPOLINE**  
SYSTEMS

GET FREE ADVICE TODAY...

+44 (0)1792 422 818

mike@playcraftgroup.wales

SOFT PLAY SYSTEMS


playcraft

GROUP

BCR4576

... Good Health through play

info@trace-si.com | www.trace-si.com | +44 (0)1483 363 169



Shaping the future of  
structural investigations

**TRACE**  
STRUCTURAL INVESTIGATIONS

# Nationwide Louvre Company

Nationwide Louvre Company manufactures high quality aluminium Louvres, Louvred Doors, Louvred Plant Screens, Acoustic Louvres, Acoustic Screening, Aluminium & Timber Brise Soleil/Solar Shading.

Nationwide Louvre Company offers a full supply and installation service to its customers throughout the UK and have completed a number of projects in the Channel Isles and Europe. The business installs bespoke made to measure quality products on residential, commercial and construction projects.

Nationwide Louvre Company specialise in Brise Soleil and louvred plant screening. Brise Soleil projects are supported with computer simulation software to assess the effectiveness of our products in reducing the effects of solar gain on buildings.

Brise Soleil not only enhances the appearance of a building but will provide a much better living or working environment for the building's occupants, with the added benefit of reducing glare to help with computer work and will reduce the running costs of mechanical ventilation and air conditioning.

Our Screening Louvre Systems are used to hide roof mounted plant and equipment and are



available in a range of blade shapes and sizes. Supplied in an enormous range of colours and finishes will screen unsightly equipment and enrich the building façade.

T 01922 457204  
[sales@nlc-louvres.co.uk](mailto:sales@nlc-louvres.co.uk)  
[www.nlcontracts.co.uk](http://www.nlcontracts.co.uk)



## Cibes Lift UK

Cibes Lift UK is one of the leading suppliers of Platform Lifts, Cabin Style Platform Lifts, Home Lifts and Goods Lifts - offering UK wide coverage and support. Our team can help find the perfect solution for your building, whether this be a commercial, public, private, or home environment.



With geographically focused dedicated sales teams and customer service, Cibes Lift UK offers:

- ▲ Lift installation without having to make major structural alterations.
- ▲ Quality, long-lasting Swedish engineering.
- ▲ The best technical support on the market.
- ▲ Excellent after sales service.
- ▲ Customer satisfaction guaranteed.

Cibes Lifts are machine-room-less (MRL), offering compact accessibility resolutions with minimal pit and top height requirements compared to traditional Passenger Lifts. Serving up to 20m in travel height and holding a weight capacity of up to 1000kg.

- ▲ Minimal structural impact.

- ▲ Minimal refurbishment.
- ▲ Low construction costs.

All Cibes lift solutions are delivered in ready-made modules ensuring fast delivery and smooth installation.

- ▲ Fast track manufacturing & delivery.
- ▲ Installation in just a few days.
- ▲ Reduced labour costs.

Wondering what lift to choose for your office or home? Need disabled access or just looking to upgrade your home? Cibes Lift UK is the number one choice for your residential and commercial lift requirements.

For more information, see below.

0800 085 0269  
[info@cibeslift.co.uk](mailto:info@cibeslift.co.uk)  
[www.cibeslift.com/gb](http://www.cibeslift.com/gb)



### CIBES HOME LIFTS

- Future proof your home
- Add value to your property
- Bring people together
- Minimal structural impact
- Minimal refurbishment
- Low construction costs

0800 085 0269    [INFO@CIBESLIFT.CO.UK](mailto:info@cibeslift.co.uk)    [CIBESLIFT.COM/GB](http://CIBESLIFT.COM/GB)





# SOLENT STREETWORKS CONSULTANTS



**T:** 023 8098 6303

**E:** [andy@solentstreetworks.com](mailto:andy@solentstreetworks.com)

**W:** [www.solentstreetworks.com](http://www.solentstreetworks.com)

**A:** London Road, Southampton, SO15 2AG



## Reliable and safe access equipment

Atlantic Access Ltd are scaffolding erectors and hirers based in Liverpool and the North West. Providing safe, access equipment for a multitude of different jobs including roofing, bricklaying and much more, for industrial, domestic and commercial projects.

Maintaining a committed, skilled and loyal team, Atlantic Access Ltd offers a highly professional service and utilises its experienced and expert team of long serving employees, of 10 years plus. This has positioned the company with the industry knowledge to assist with varying sized projects and Atlantic Access Ltd has built a strong reputation for its high quality service, personable approach and competitive prices.

The company offers its services for all residential work, new build properties, demolition work and commercial. Some of its recent commercial projects include: Vinci IHP on Preston Royal Hospital, the Boohoo main office in Manchester for Hightown Construction, Grahams Liverpool flyovers demolition, Parkinson Construction on Oldham Royal Hospital and Salford Hospital, John Turners on Whiston Hospital, ongoing



Maintenance package for Daresbury Science Technology Park and ongoing works for the National Trust on Speke Hall and Chambre House in Liverpool.

**If you would like to find out more, please see the details below:**

**Steve Long, Director,**  
**T 0151 549 1551**  
**M 07917 193357**  
**ste@atlanticnw.co.uk**  
**info@atlanticnw.co.uk**

## INTEGRASPEC® is your best choice of ICF to deliver

The Ballantine Building Solutions team has over 20 years experience as ICF Builders suppliers, Installers & Builders using ICF and have worked on many successful ICF projects.



ICF is based on hollow lightweight block components that lock together to provide a formwork system into which concrete is poured. The blocks are made from expanded polystyrene panels fixed together with plastic webs (reducing thermal bridging) to create a formwork to which horizontal and vertical steel reinforcements can be easily added for extra strength. Once braced, concrete can be poured into the

forms enabling fast construction one storey at a time.

The ICF walls as soon as built are waterproof even before the external finishes are applied, allowing internal work to commence sooner. This ensures for an incredibly fast & efficient construction that isn't impacted by adverse weather in the same way traditional masonry is. Cold temperatures do not affect progress.

With an average saving of between 25% to 30% in both cost & building time and low 'U' Values from 0.23W/m2degk down to 0.11W/m2degk – When all factors & benefits are taken into consideration, ICF becomes extremely competitive compared to both traditional building methods and lightweight framing.

**Contact**  
**T 028 9590 6508**  
**admin@integraspec.co.uk**  
**www.integraspec.co.uk**

# STEELO

Structural Steel Fabricators.

**ON-SITE**  
**ON-TIME**  
**EVERYTIME**

**Call**  
 0208 569 8144

**Email**  
 Sales@SteeLo.co.uk

**Visit**  
 Unit 9, Fairway Trading Estate  
 Hounslow, TW4 6BU



Best Structural Steel Fabricator - London  
 2022 & 2023

# Service Sealing Solutions Ltd visit DOYMA

Service Sealing Solutions Ltd is the sole UK distributor for the sealing industry's top manufacturers; DOYMA and HKD. Service Sealing Solutions Ltd supply the full range of DOYMA and HKD products, to suit all situations from sealing power cables, communications cables, pipes and ducts and district heating pipes, permanently preventing an infiltration of gases and water into the building. DOYMA's products are designed to solve all watertight sealing requirements and prevent against structural damage. DOYMA products are also guaranteed watertight for 25 years.

HKD which is now owned by DOYMA, manufactures a vast range of pipe sealing systems and service ducts with a guarantee that its products can withstand up to four bars of pressure. All of the HKD product range can be combined with the DOYMA's Curaflex range, one of the most popular DOYMA ranges.

Service Sealing Solutions Ltd specialises in high-quality service duct sealing systems for utility services and watertight seals, offering the highest level of expertise to developers and specifiers for sealing against water and



**Husband and wife team, Jim & Tina have recently visited DOYMA in Germany to find out about the innovative products that DOYMA have been developing**

gas entering around service entries in basements and high-rise buildings.

**Contact**  
**T 01952 510050**  
**tina@servicesealingsolutions.co.uk**  
**www.servicesealingsolutions.co.uk**

# FireDNA digitally monitors Fire Doors and Passive Fire Products

With the new Fire Safety Regulations having been in force for several months, Contractors, Fire Door Inspectors and Building Owners see the real benefit in using FireDNA

Post Grenfell, we saw an opportunity to introduce a new and innovative way of Monitoring Passive Fire Products in the built environment using the latest digital technologies.

FireDNA is an 'award winning' cloud-based Software and a Mobile App that has been developed for everyone involved in Passive Fire Product Manufacture, Installation, Inspection, Management and Maintenance. As well as for those that live and work within environments where Passive Fire Products are installed and are now required, under new legislation, to be digitally logged and monitored.

FireDNA delivers that digital 'golden thread' for all Passive Fire Products in the built environment from Fire Doors, Panels and Partitioning (including all intumescent seals, glazing and ironmongery), through to Fire Cables, Dampers and Ductwork.

FireDNA software catalogues Manufacturers product data, digitally shares it with Contractors and Installers, who in turn add their installation data, passing that onto Building Owners, Facilities Management Teams and Tenant Management Organisations.

That data can then be used by Building Control, Maintenance Teams, Fire Inspectors and viewed by Tenants and Residents alike, with a simple swipe of a mobile device.

FireDNA digitally links everyone in the chain of responsibility and creates a 'Golden Thread' of information across the full product lifecycle from cradle to grave.

**To find out more about how FireDNA can assist you, or for more information about our products and services, please visit: [www.fire-dna.com](http://www.fire-dna.com) or call our team on: 01403 597590.**



**Service Sealing Solutions Ltd – suppliers of DOYMA products**

Service Sealing Solutions Ltd are the sole UK distributor of DOYMA products. Wherever services are installed through walls, ceilings or floors, penetrating water may cause damage to buildings. Lack of attention to the points of entry of pipes and cables into the building can have serious results: damp cellars, equipment damaged by water ingress and high repair costs. Service sealing systems ensure professional and perfect pipe sealing, thus presenting excellent preventative measures against structural damage. The very best in German engineering is used to seal penetration points at the wall to permanently prevent any infiltration of gases and water into the building, and the duct sealing systems are guaranteed for 25 years. Service Sealing Solutions supply the full range of products to suit all situations for power cables, communication cables, pipes and ducts, and specialising in sealing district heating pipes.

**01952 510050** [www.servicesealingsolutions.co.uk](http://www.servicesealingsolutions.co.uk)  
**sales@servicesealingsolutions.co.uk**

**M&M KENT SERVICES LTD**

We are distinguished Drylining specialists with over 20 years experience in the industry. Our team is committed to delivering excellence for all buildings in the UK.

We are specialists in internal finishes and facade, including:

- ✓ SFS and render installation
- ✓ Partition walls
- ✓ Ceilings
- ✓ Plastering or tape and jointing
- ✓ Screeding

**GET IN TOUCH WITH US TODAY.**  
**TEL:** 01795 436 103  
**MOB:** 07757 685 441  
**EMAIL:** [info@mmkentservicesltd.co.uk](mailto:info@mmkentservicesltd.co.uk)

# Elevate Your Business with Independent Access Sales



Imagine a machine that combines speed, efficiency, and safety all into one compact design. That's precisely what the Sorage 24D Speed truck-mounted machine promises. Tailored for the demands of modern cities and diverse terrains, the 24D Speed is not just a tool, but a game-changer, ensuring projects are completed with unmatched precision and timeliness.

Yet, the brilliance doesn't end there. The Spider Lift R180 from Easy Lift is another testament to IA Sales' commitment to excellence. Lightweight, yet powerful, the Spider Lift R180 is the epitome of flexibility and strength. Designed for the trickiest of spaces and the toughest of tasks, it's a machine that stands tall, ensuring that professionals always have the upper hand.

But what truly sets IA Sales apart is their comprehensive approach. Beyond offering stellar machines, they also ensure that these machines are always in prime condition with their top-tier servicing. With a team of experts just a call away, customers can have peace of mind knowing that their equipment is always ready to perform at its best. It's this dedication to customer satisfaction that makes IA Sales not just a provider but a partner in every sense.

In the evolving landscape of access machinery, businesses don't just seek equipment, they seek partners that offer comprehensive solutions. That's where Independent Access Sales (IA Sales) shines brightly. As the sole distributor in England for the globally acclaimed manufacturers, Sorage and Easy Lift, IA Sales is more than just a provider; it's a partner for progress.



Moreover, the offerings at IA Sales are vast. A visit to their website reveals a wide range of products, each designed to cater to diverse industry needs. Whether you're in construction, entertainment, or any sector in between, there's a solution waiting for you at IA Sales. So, if you're looking to elevate your operations, look no further. Partner with Independent Access Sales and experience the synergy of world-class machinery, impeccable servicing, and a partner that's dedicated to your success. With IA Sales by your side, the future looks not just promising, but elevated.

T 07483246878  
[enquiries@iasales.co.uk](mailto:enquiries@iasales.co.uk)  
[www.iasales.co.uk](http://www.iasales.co.uk)

Canary Fire Stopping are a 3rd party accredited London-based contractor providing a range of passive fire protection solutions and quality fire stopping finishes.

# QUALITY FIRESTOPPING FINISHES

[www.canaryfirestopping.co.uk](http://www.canaryfirestopping.co.uk)



- PENETRATION SEALING
- INTUMESCENT SEALANTS
- PIPE COLLARS & WRAP
- CAVITY BARRIERS
- SURVEYS & CONSULTANCY
- REMEDIAL WORKS
- FIRE DOORS & PARTITIONS

☎ 0203 092 8804

✉ 07895 243 777

✉ [Info@canaryfirestopping.co.uk](mailto:Info@canaryfirestopping.co.uk)

# Access Panels and Riser Doors

At Rapid Access, we understand visually aesthetic designs, evaluates the quality of your work! As a leading manufacturer in the Access Panel world, we are always looking for new sleek ways to improve our products and your projects.

Our new invisible ironmongery is now available on our Riser Doors with a sleek new element. Our magnetic fire door keep locked shut sign simply slides away from the door face to reveal the hidden ironmongery.

These door sets can be easily opened to provide access to services in buildings such as water, electrical, mechanical, gas, telecommunication compartments, HVAC systems, and many other maintenance options. Rapid Access offers either a piano hinge system or our fast, quick and user friendly Rapidfit® hinge system, which has revolutionised the riser door. Say goodbye to old Piano Hinge technology and say hello to future of Access Panels.

As no cap is required to hide the lock, this new feature is completely maintenance free, this means we have eliminated additional moving parts when accessing the lock.

Our new design is available up to 2 hour fire rated and up to 36dB acoustic rated. Rapid Access can also offer this new feature in both single or double door units ranging from 2,400mm x 1,800mm.

The company specialises in manufacturing steel products, and it currently has two unique products that offer ease and money saving aspects when fitting the panels that Rapid



Access Ltd have designed. These are the Rapidfit® hinge system for Riser Doors and the unbeatable Flipfix panel for wall and ceiling use.

The FlipFix range launched in 2015, offers a unique fitting device, Mitreless frame and new Flush Lock system. The innovative box packaging for stock sizes doubles as a pop-out template – simply draw around the template and cut your hole ready. The FlipFix device easily secures the access panel against plasterboard or drywall with a thickness ranging from 8mm to 32mm, and this allows the panel to fit flush to the wall providing a clean overall finish. FlipFix complies with the performance criteria for integrity using the principles of BS EN 1634-1: 2014.

Rapid Access Ltd are also the inventors of the trademarked RapidFit® hinge system on its riser door range, and this hinge system

has revolutionised the riser door by reducing door fitting times on-site by as much as 95%. Working on a spring-loaded pin hinge means that installation of the door, once the frame has been installed is much quicker than a door supplied with a traditional piano hinge.

In a crowded marketplace, Rapid Access Ltd works hard to stay at the forefront of the industry, and it has a committed and exclusive team that works on product development. Using previous and market leading research the team constantly works on new products that its loyal customers can promote with pride. The company is also always looking to pioneer its established name into all industries by way of bigger and better ideas.

**T 024 7632 8811**  
[sales@rapidaccessltd.com](mailto:sales@rapidaccessltd.com)  
[www.rapidaccessltd.com](http://www.rapidaccessltd.com)

## Qualitative and quantitative fit testing and fit test training

We have experience in face fit testing, and we have Fit2Fit accredited fit testers in our team. Meaning our methods have been checked and confirmed with best practice for face fit testing in line with the BSIF and HSE.

Our experienced dental team, with a wealth of dental experience are now delighted to be able to offer a fit test service for FFP3, FFP2 and FFP1 masks. Using the 3M qualitative testing kit, we can arrange appointments at your workplace to fit test your staff, with your own masks.

Quantitative face fit testing eliminates the guesswork associated with error-prone qualitative fit test methods. Using the PortaCount Pro Respirator Fit Tester 8030 fit tester, we can now quantitatively fit test

so many types of respirators – gas masks, SCBAs, respirators. If the mask requires fit testing, count on the PortaCount Pro fit tester to provide the fastest and easiest HSE (UK) and OSHA (US)-compliant fit test method.

We also provide fit test training at our Head Office in Winnersh, Wokingham – The Train the Tester course to provide you with knowledge, skills and confidence or Train the Tester RPE Refresher, which is hands on and practical.

**Contact Andy at: [andy@cavity-fit-test.co.uk](mailto:andy@cavity-fit-test.co.uk) or call: 0118 214 6192 to get your local fit tester today.**

**You can visit: [www.cavity-fit-test.co.uk](http://www.cavity-fit-test.co.uk) for more information.**



# Five Technologies that are transforming the Construction industry



It can be easy when you're running a busy construction company to focus entirely on the day-to-day operations of your work and lose sight of developments in the wider industry. With so much volatility in the market and general angst around spiraling material costs, recruitment, logistics and more, you can be forgiven for not spending too much time researching new technologies. However, the reality is that new equipment and techniques are actually the solution to many of these issues you face

as a company director. Here's an overview of five that can help you to work more efficiently and safely:

**Drones** - there are tasks that can be performed quicker and more safely by drones than with traditional methods and with a variety of payloads from cameras to lidar and thermal imaging, you will soon see the benefits of an aerial perspective.

**Non-destructive Testing** - covermeters and

ground penetrating radar allow you to assess the structure of concrete without having to drill into it.

**GNSS receivers** - surveying with sub-centimetre level accuracy thanks to satellite positioning has streamlined many processes, especially with regards to topographical and GIS surveys.

**Laser scanners and reality capture** - you can create a 'digital twin' of your site for a variety of purposes, from design right through to marketing, and with easy access to every single measurement and a photorealistic 3D model, everyone can be engaged in the project without having to physically visit

**Machine Control** - combining satellite positioning with heavy machinery, the operator has a screen in their cab that guides them exactly where and how deep to dig with an excavator, as well as giving them the power to document positions with their bucket for as-built verification.

It can be difficult to know where to start with some of these advances, so Surveytech have been creating a series of youtube videos and webinars to explain everything you need to know, just look for Surveytech on google or follow on social media for more information.

**For more information:**  
[survey-tech.co.uk](http://survey-tech.co.uk)

## QR code and track your construction documents

Works with:

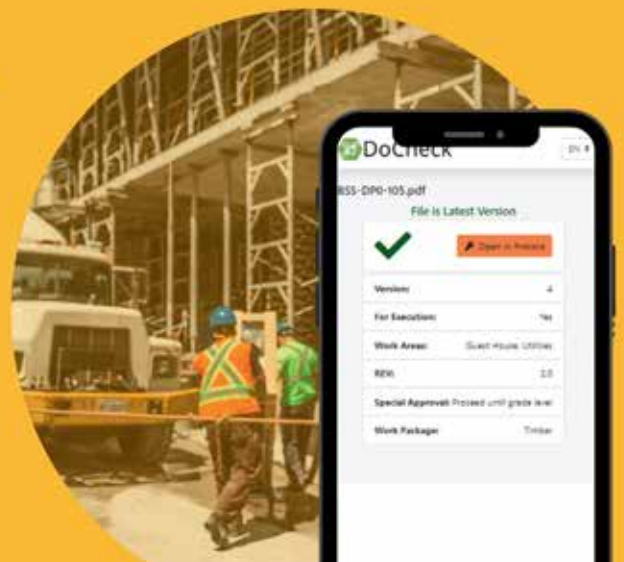
- Autodesk Construction Cloud
- BIM 360
- Procore
- Microsoft SharePoint
- Any mobile or tablet that can read QR codes (No apps to download!)



 **BlackSmithSoft**  
[www.blacksmithsoft.com/qr](http://www.blacksmithsoft.com/qr)



DoCheck





## LEADERS IN OUR FIELD

Consulting on various aspects of project design, constructability and operational lifecycle matters for local and global commercial clients.



DCON Safety Consultants awarded Excellence in Business Award - Safety Specialists by The Public Sector Magazine 2023 as well as Excellence in Health & Safety in the Fit Out Awards 2022.



DCON Safety Consultants  
Suite 5, Fitzwilliam Square East, Dublin 2  
Email [info@dconsafety.com](mailto:info@dconsafety.com)  
Phone +353 (0)1 611 1556  
[www.dconsafety.com](http://www.dconsafety.com)