



BCR
Building & Construction Review

ISSUE 408

June 2024

0121 824 4743 | buildings@bestpracticeuk.co.uk
www.bcr.uk

Search for us on LinkedIn and follow us on Twitter [bcr_uk](https://twitter.com/bcr_uk)



Innovate Access Solutions
Pages 4 - 5



Sandpit Creations
Pages 10 - 11



Ecomerchant
Page 14



Bluerun Limited
Page 28

Introducing Vision Development: Where tradition meets innovation

In the world of construction, few materials embody the timeless allure of timber. At Vision Development, we honor this tradition while embracing modern innovation to deliver unparalleled craftsmanship and quality.

With decades of experience in the construction industry, Vision Development has perfected the art of marrying natural beauty with structural integrity. Our team of skilled fabricators meticulously handcraft each timber frame structure using sustainably sourced wood, ensuring both durability and environmental responsibility.

What sets Vision Development apart is our unwavering commitment to customisation. Whether you're envisioning a cozy cabin retreat or a sprawling architectural masterpiece, our experts work closely with you to bring your vision to life. From intricate joinery to stunning finishing touches, every detail is tailored to reflect your unique style and preferences.



Vision Development

But Vision Development isn't just about aesthetics – it's about reliability. Our timber frames are engineered to withstand the test of time, providing a solid foundation for generations to come. Plus, our streamlined construction process ensures timely completion without sacrificing quality.

Experience the timeless beauty and unmatched craftsmanship of Vision Development. Elevate your space with a timber frame that's as enduring as it is breathtaking. Contact us today to begin your journey toward a home that stands apart.

[Click here to head to the Vision Development website to see the timber frame projects they've completed.](#)

Contact Vision Development on 01189 712181 or email them at info@vision-dsl.com for more details on their products and services.



Glamping business for sale



Hampshire couple Tiffany Wilson and Tim Ferguson have spent seven wonderful years running their dream company: Dorset Bell Tents. The family-run business has supplied bell tent hire for a variety of events such as weddings, garden parties, corporate fundraisers through to children's birthday sleepovers across Dorset and surrounding areas.

In 2022, a report by Research and Markets stated the UK glamping market was worth £5 billion. With an annual growth rate of 10%, it has shown no signs of slowing down.

If you've always dreamed of running your own glamping business, here's your chance. Dorset Bell Tents is looking for a new glamping-loving owner.

"We want to pass on our business to a new owner- and what an opportunity! Dorset has everything from beautiful coast lines to summer food and music festivals.

Our bell tents are popular from April to October for all events and we offer three graded packages.

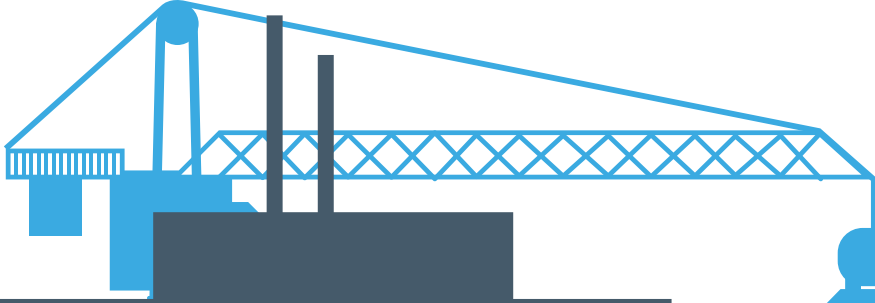


Our heavy-canvas bell tents have frequently been the only ones left standing, even after the storms of late. Their brilliant design keeps you warm in colder months and cooler in summer.

The new owner will inherit all our summer 2024 bookings, including repeat business, all stock, website/ social media and company name." added Tiffany.

If you're interested in the opportunity of a lifetime: contact Tiffany or Tim with all serious offers below:
T 01202 374188
M 07503 000188
info@dorsetbelltents.com
www.dorsetbelltents.com





CONTENTS

On the cover



Vision Development

1



Innovate Access Solutions

4 - 5



Sandpit Creations

10 - 11



Nomadic Washrooms

17



Bluerun Ltd

28

Building Products & Services 3

Best Of Britain Award 4 - 5

Commitment To Health & Safety Award 6 - 7

Commitment To Excellence 8 - 13

Best Of Britain 15 - 20

Building Products & Services 21 - 23

Landscaping & Outdoor Building 24 - 25

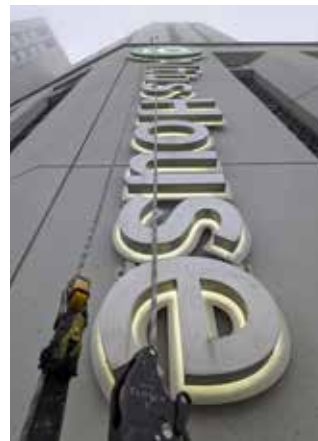
Hello & welcome to Issue 408 of BCR...

Welcome to this month's issue, where we explore the challenges, innovations, triumphs, and current trends shaping the world of building and construction.

As Innovate Access Solutions continues to expand its impact, we explore the motivations behind their relentless innovation. As winners of our Best of Britain Award, we spoke with Alf Taylor, co-founder of Innovate Access Solutions, to gain insights into the expertise that he and co-founder Rob Foyle bring to the table that have helped the company build a trusted network of clients since its inception in 2020.

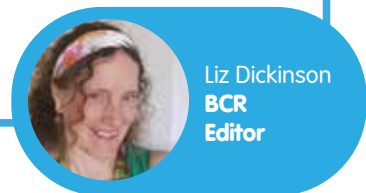
On pages 8-9, we proudly feature a fascinating article on Trust Event Stages Ltd with a Commitment to Excellence in its outstanding contributions to stage supply in the entertainment sector. Owner Spike's motivation, passion, and hard-working mentality are truly inspiring, driving the company to continuously enhance its services and push the boundaries of what's possible in event staging.

Don't miss our detailed article on the talented team at award-winning Sandpit Creations whose project management style is flawless. From pop-ups to museum work, theatre sets, outdoor attractions and bars/pubs, Sandpit Creations naturally think outside the box when it comes to non-standard build designs. Pages 10-11.



Other topics covered in this issue include Lighting, Consulting & Development, Event Planning, Heat Pumps & Heating Systems, Sustainable Timber Cladding, Health & Safety.

Email all news to: liz@freshmedia-uk.co.uk



Liz Dickinson
BCR
Editor

Contacts

Publication Management

Sam Morton
Sales Manager
T 0121 824 4743
buildings@bestpracticeuk.co.uk

Production

Robert Sharp
Production Manager
production@businessandindustrytoday.co.uk

Accounts

Paul Whitaker
Accounts Manager
T 0121 824 4742
accounts@bestpracticeuk.co.uk

Editorial

Liz Dickinson
Editor
liz@freshmedia-uk.co.uk

Search for us on [LinkedIn](#) and follow us on [Twitter](#) [bcr_uk](#)



NeutraliZer™ CO₂ Concrete Washout Solution

Key Features

- Continuous flow in line processing system
- Skid-mounted - highly mobile - small footprint
- No hazardous chemicals or batch treatment
- Fully automated - user-friendly - Plug and Go!
- Rugged construction
- Integral flow & pH meters, alarm beacons - pH/out of gas
- Remote Cloud-based monitoring
- Up to 50m³/h flow rate



Custom Branding available!

Applications

- Construction and building sites
- Concrete wagon wash outs
- Mining
- Quarrying
- Demolition sites
- Concrete paving and brick manufacturing
- Chemical and Pharmaceutical Industries
- Railway and Road Infrastructure
- Water Companies



Contact Smart Storm
01422 363462
www.smartstormgroup.com

Waterproofing performance from ARBOFLEX® PU for greener city living

ARBOFLEX® PU liquid applied waterproofing system from Carlisle

Construction Materials was chosen for Park Avenue Place at Neptune Wharf. The prestigious project in Deptford, East London, led by Galliard Homes, featured 176 luxury flats and forms part of a wider regeneration programme.



insulation, and the ARBOFLEX® Liquid Carrier Membrane, prior to application of the ARBOFLEX® PU liquid-applied waterproofing.

The roofing project was delivered by T & T Roofing Limited, and leveraged the ease and speed of installation benefits of the ARBOFLEX® PU system that was used as part of a complete roof build-up supplied by Carlisle for the roofs, terraces, and balconies of all the development's apartment blocks, along with the podium deck and the planters.

The roof build-up for each building included a consistent sequence of layers, beginning with Carlisle's ALUTRIX® vapour control layer, tapered fire-retardant rockwool Multifix

Further quality assurance for the installation was underpinned by the collaborative relationship between Carlisle and T & T Roofing Limited, with on-site training in the use of the ARBOFLEX® PU system provided by Carlisle, along with regular technical inspections.

Carlisle worked collaboratively with the contractor to provide both efficient product supply and cost certainty. Carlisle ensured that the green roofs, comprising a build-up of protection layer, drainage board, fleece layer, biodiverse planting substrate, cobbled borders, and an aluminum trim, was installed on each roof area. Renewable power for the apartments was provided by ballasted solar PV installations.

www.ccm-europe.com/gb

In-Line CO₂ pH Balancing For Caustic Concrete Washout Water!

Mobile Skid

Fully Automated

User friendly - Plug & Go!

Continuous Process

Low Operating Costs

No Hazardous Chemicals

Personalised Branding

Small Footprint

Robust Design

IOT Enabled



'The Unique NeutraliZer™

CO₂

pH Balancing Unit!

Uses just CO₂

Treats and Balances Highly Caustic Wastewater In-Line!

Up to 50m³ /Hr

Find out more!

Enquiries@smartstormgroup.com

www.smartstormgroup.com

T: +44 (0) 1422 363462

Innovate Access Solutions wins Best of Britain Award.

As **Innovate Access Solutions (IAS)** continues to expand its impact, the **Best of Britain Award** serves as a significant milestone, highlighting the importance of its work and the positive change the company is making in driving the access industry forward.



Innovate Access Solutions (IAS), founded in 2020 by former colleagues Rob Foyle and Alf Taylor, originated in Manchester. Leveraging over 25 years of combined professional experience, the company has grown significantly, now boasting offices in Darlington and High Peak. IAS has quickly become a leading name in the rope access industry, not only in the North West but throughout the UK. Their commitment to excellence has earned them prestigious accreditations, including SafeContractors, CHAS Platinum, and ISO 9001.



We spoke to Alf Taylor, who elaborated on the extensive expertise and experience that he and Rob bring to the industry.

“Both Rob and myself have been

working on the ropes for over 15 years, and are extremely competent in all facets of access within our trade. It is our skills in site management that we have gained over the years that enable us as a company, to run projects so successfully.

Rob comes from a painting and decorating background, where he earned his City and Guilds in the trade. This included industrial fire proofing spraying. Rob is highly experienced in working in the industrial sector, and has always excelled in finding access solutions within the hot and tricky environments of power stations. He has the ability to find access into the hardest to reach places, whilst maintaining immediate access to his operatives in an emergency.

With many years of experience navigating the challenging world of construction sites, I have refined my expertise in project management and collaboration with various trades to minimise site disruption and keep projects on track. I have successfully managed teams of up to 20 rope technicians, ensuring smooth operations and timely completion of projects.”

The Best of Britain Award celebrates outstanding achievements and innovation in British business. We believe that Innovate Access Solutions has distinguished itself through its commitment to creating environments that people want to work within. “I think a large part of it is our enjoyment of what we do. We each have a number of years’ experience in the industry which puts our client at ease, but we also really love our work, which enables us to build a personal relationship with our clients. We not only care about our clients, but also our friends in the industry that we now have the pleasure of employing. We are paying our subcontractors the top end wage for our industry, and have a great reputation to work for because we are professional,

honest, fair, and great fun to hang out with,” added Alf.

The company’s innovative solutions encompass trusted expertise that far outweigh that of any competitor. “As a company, we only employ subcontractors that we know and trust to assist us in carrying out our projects. One way we differ is that we use a 3rd party to audit our site-specific Risk Assessments and Method Statements (RAMS). If a client needs assurance that all our paperwork is in line with the most recent Health and Safety legislation, then we are happy to have our RAMS audited by our extensively qualified, independent Health and Safety consultant,” said Alf.

IAS take a customised and tailored approach with every single client. In order



Building & Construction Review



to meet each specific need starting from the initial point of contact with potential clients, right down to the completion of the contracts, Alf and Rob are hands on and present at every stage. "We always meet with clients to establish our main focus, which at the beginning stages is to gather all the information needed with regards to site specific health and safety requirements, exclusion zone specifics, 3rd party protection and any working restrictions," added Alf.

IAS provide access solutions to a wide variation of clients within the construction, industrial and commercial sectors. Its main speciality lies in giving clients access options that enable them to complete their projects when other conventional means of access are not suitable. IAS provide skilled operatives to complete many facets of work which can be anything from industrial cleaning and painting, to glazing and heavy steel installation, as well as signage installation, inspection and survey works.

Even though the company started during the first year of COVID-19, it has managed to year-on-year achieve steady growth, building a portfolio of high-profile clients including Dublin Airport and British Gypsum. This remarkable achievement is highlighted by its client-focussed approach to all contracts. "We will never waiver on our Health and Safety commitments to ourselves or our subcontractors - we are a premium company that provides quality and assurances to every client," said Alf.

Alf went on to describe one of the company's most prolific clients and how IAS work with them.

"Ashleigh Signs was our first client, and are still our most prolific client. Rather than just being a contractor that carries out site work, we have built a close working relationship that has led to us to getting involved right at the early stages in some of their larger projects. We attend the preliminary site visits with Ashleigh Signs and their clients, and if required, provide input in the manufacturing stage of their products. This helps to ensure that the complexities of rope installation are understood and taken into consideration.

They trust us to liaise directly with their clients if needed; an example of this would be a project that is currently ongoing for a well know hotel brand. We are working closely with Ashleigh Signs and the Principal Contractor on site to ensure that the temporary works installations are designed to meet all the Health and Safety requirements."

Even though IAS has only been established four years, its steady growth is already yielding a fruitful future. "Our plan going forward is to maintain our steady growth, and to grow the company to provide a secure future for our families. We would also love to be able to provide well paid stable jobs for our friends in the industry, and to develop as a well-regarded, high end access solutions company that will last longer than us! Again, we are over the moon about being chosen! We have been working extremely hard to grow a business that lives up to our



reputations as subcontractors, and to get such amazing recognition at this stage is a real honour and a privilege. Thank you so much for this recognition, and for the added reach our company stands to gain as a result of this award. Lastly, we would love to give an extra special thanks to our Office Manager, Hannah! Hannah joined the team in 2022, at a point when Rob and myself seemed to be spending almost as much time on paperwork as we were on site! During her time with us, she has taken on and streamlined all behind the scenes processes making sure everything runs smoothly. We honestly don't know how we would have coped without her," stated Alf.



For more information about IAS's services and future initiatives, please visit the IAS website below:
T 01618 505059
info@innovateaccesssolutions.co.uk
www.innovateaccesssolutions.co.uk

DCON Safety Consultants

Inspiring continuous improvement in **health & safety** standards for the built environment



After seven years in business, DCON Safety Consultants successfully claim another industry recommendation award. We are proud to announce that DCON Safety Consultants is the winner of our Commitment to Health & Safety award. Founder and Managing Director, Diarmuid Condon instantly deflected praise to his clients and industry partners where he modestly admits it would not have been possible without the invaluable input of an extensive network of partners.

“We are humbled to have been chosen but the reality simply is, is that we wouldn't have received this award without our clients, their design teams & project managers, and our consultant partners that we work closely with on a day-to-day basis prioritising health, safety and wellbeing. It's imperative that we acknowledge all project parties as it's ultimately a collaborative effort.”

Diarmuid goes on to further remark, “We advise and offer guidance on design, planning, procurement, construction and operational outcomes. Outcomes are only attained from buy-ins from our clients. This relationship and rapport extend to our delivery partners – i.e. Main Contractors – who also have to be highly commended. Our service pool is extensive, and it is important to acknowledge everybody involved. Their contribution and hard work allow us to continue with our principal service offering and to extend and expand upon it. Our clients have been very much affected by the pandemic and have had to significantly alter their site practices and manage the challenges presented.

This has impacted their resources and these are the real winners of this award. We could not collect or promote this award without our partners.”

As proven leaders in built environmental, health & safety and wellbeing consultancy matters, consulting on various aspects of project design, constructability and operational lifecycle matters for local and global multisector clients, DCON Safety Consultants prioritise and specialise to the highest levels of informed and intelligent advice,



senior project resource allocation and compliance assurance. Acutely cognisant of the fact that every project with potential benefits also has potential risks – and with the art of planning centring on the coordination of these two zones of uncertainty - their team of highly-experienced construction professionals consistently prioritises and safeguards each client's best interests and statutory conformity.

The skills, knowledge and experience of DCON's staff and service partners places them at the forefront of their profession; their unique approach to the services provided is focused heavily on assisting clients in demonstrating confidence to their levels of compliance whilst also exploring how they might improve their safety performance.





professionals boasting an average of 20+ years' experience working in the built environment.

Principal services provided by DCON Safety Consultants includes that of a Project Supervisor for the Design Process (CDM Advisor Plus), Pre-Planning Compliance, Safe Design Adherence, Health & Safety Strategy Creation, Client Advisory Roles, Physical Site Safety Auditing and Expert Witness. Through these services, they support and influence the design of proven health, safety and wellbeing strategies that seek to help clients achieve high-quality, cost-effective work for the safe design, construction and operation of their assets.



construction, alternative design layouts or BIM developments.”

Congratulations to DCON Safety Consultants for winning the Commitment to Health & Safety award! This recognition underscores your dedication to ensuring the well-being of workers and fostering safe environments. Your commitment serves as a shining example in promoting best practices and standards in the industry. We will continue to follow your excellent work in prioritising health and safety for all.

With the safety and wellbeing of their own people, their client's staff and those around them is at the heart of the business. DCON Safety Consultants are passionate and highly committed to continually improving health, safety and wellbeing management in collaboration with clients. They have accumulated extensive experience in the provision of specific health and safety advisory services on large, complex projects and public and private developments.

DCON Safety Consultants serve a wide and varied selection of customers including Public Sector Departments, Corporate Owners, Real Estate Developers, Main Contractors, Design Professionals and Infrastructural Bodies. No project is considered too simple or complex for their team of high-quality specialist consultants and construction



While Diarmuid's track record in designing and executing strategic safety plans and systems for construction projects in Ireland and the UK is exceptional, his comprehensive background as a construction professional has been key to taking DCON Safety Consultants to where they are today. "We are construction-qualified specialists, and we are there when it is difficult, not just when it is easy," he promises. "We understand both safety design and the mechanics of construction methodology. Our primary qualifications are in construction and that is hugely important."

"While we provide safety services, you also need to understand how things get constructed and deconstructed. There's value in that and it is earned. We understand that value and we are always open to learning and strive to excel in new technologies, be that lean

Contact
T +353 1611 1556
M +353 86 047 4289
diarmuid.condon@dconsafety.com
www.dconsafety.com





Built from scratch: festival stage industry

Here at **Building & Construction review**, we are delighted to showcase **Trust Events Stages Ltd** with our **Commitment to Excellence** for outstanding stage supplying across the entertainment sector.

A Guardian review of last year's Parklife festival was stellar, with a headline reading: 'northern rave culture clearly in rude health.' The iconic two-day dance, electronic and hip-hop festival has been running for 14 years in Manchester's Heaton Park and last year boasted performances from world class rapper: 50 Cent, hell raisers: The Prodigy and eclectic ethereal alt-rockers: The 1975. This summer returns with Becky Hill, Doja Cat, Rudimental and much more.

The G2-Stage at Parklife is where all the big names play and is known locally as a 'meeting point' for revellers.

But have you ever wondered about the crew behind the scenes? The ones who make the magic happen?



Meet Trust Events Stages Ltd- run by self-confessed rock n'roll fan Spike Brookes and established back in 2002. The Somerset-specialist stage hire company has provided indoor and outdoor festival stages across the UK and Europe.

The history of the Trust Events Stages is compelling, like all good start-up companies. After a long stint in the military, Spike found himself needing to make a living for his young family. Spike took a 'leap of faith' and with a fiver

in his back pocket and registered the company in 2002. I would add that serving in The Armed Forces for some 15 years with The Grenadier Guards has instilled an understanding for not only attention to detail, but the importance of creating a reliable company that can be trusted to present a structure on time, with minimum fuss and within budget.

Spike's summers are largely nomadic, spent working all over the country on outdoor music festivals. Along with his trusted team, he's provided stages for the multi-award-winning Black Deer Festival- one of THE biggest Country/ Americana festivals in the UK.

Held at Eridge Park, Kent- the festival features some 60 performances over three action-packed days and this June will see the likes of Rufus Wainwright and Sheryl Crow.

The difference is that Spike and co, complete an extensive site visit some months previously and will arrive the day before to get the lie of the land, smooth the process of lorries turning up first thing for unloading and reacquaint with friends and business associates from across the industry.

"The entertainment industry is colossal but the staging side is small and we all know each other well," joked Spike.

"I'm known for mucking in- once we've done our bit, we will help everyone else with marquees or floor laying- it's a huge team effort. It's like when the circus comes to town!"

That's not all. Spike has spent the last 22 years organically building up contacts across the industry and receives a lot of repeat custom. His website is full of glowing customer testimonials, praising his 'extra-mile-



can do' professional attitude, which Spike never takes for granted and feels blessed.

It's no accident that Spike is so well loved across the industry and he makes a point of never 'overselling' and will only work with one festival or project at a time. This allows Spike to settle on site and never be 'in two places at once' and focus on the job at hand.

It's a well-known fact that Brits love outdoor festivals: taking glamping or indeed camping in their stride and are guaranteed to mosh until the small 'wee hours. Throughout the summer months, there is literally a festival for every budget and Spike has worked on many of them.

"We supply stages for Nottingham's biggest outdoor festival: Nottingham Splendour, Hertfordshire's 80's/90's themed- Chillfest and we out HERE in Dorset- described by the Independent as "the bijou jazz festival where saxophonists are treated like rock stars! We are



22 wonderful years in the industry and counting!



us. It opened our eyes to a whole new sporting world! The feedback was amazing- we were told that the standard of our work was higher than the Olympic Games model, which was high praise indeed! We have worked on Winter Wonderland sets in the past and would relish the opportunity for more out-of-season work during the Autumn and Winter months. This could be anything from Halloween, Bonfire Night, winter ice rinks to Day of the Dead or Chinese New Year events – we welcome all enquiries!"



Known for its heavy-duty rigging and serious decor potential, it can also be used as a semi-covered venue, with the audience under the main atrium or even majestically run as a bandstand with 60-piece orchestra.

So, what do Trust Events Stages Ltd provide?

Spike and his crew are known as the 'stage masters' and can supply everything from the infamous 28m diameter G2 stage (seen at Parklife festival), G3 stage, 8m ORBIT stage, Prolyte stage, through to bandstand stage, sound booth stage, speaker masts and much more. The additional three 15m x 24m ORBIT stages are handy when a large stage is needed but a crane cannot get on-site.

The G2 Stage encompasses a hexagonal arched structure – a familiar site across many UK music festivals

now and can be ground pinned or ballasted on base frames. The 10m x 10m stage can easily fit in the stage pod and pretty much any stage deck configuration can be built inside the main structure.

part of a large network of suppliers and can help organisers/producers access everything from lighting, sound, power, and insurance to toilets!

Nothing is too much to ask!" When the hedonistic summer days fade and the Autumn days roll in, Spike and his team take stock and use their time wisely to carry out safety checks on FLT and cranes and add paint touch-up jobs. Though traditionally seasonal work, Spike remains upbeat and certainly after 22 years would never describe the work as humdrum.



"We once worked on a European Archery wall installation, which was a new experience for

"We take health & safety really seriously- everything we do is HSE-compliant, from risk assessments, high wind/adverse weather calculations, through to on the day: team working goals. The ropes, climbing equipment, pullets



and strops are thoroughly checked and our lifting practices are LOLER-compliant. We partner with STS Touring for all sound, lighting, rigging and stage management/production and use the red and white shiny lorries from WILLMOTTS TRANSPORT for all trucking. It's a well-oiled machine!" explained Spike.



For more information, or to have an informal chat with Spike Brookes, see the details below:

T 01749 841 720

spike@trustevents.co.uk

<https://trustevents.co.uk>

<https://www.linkedin.com/company/trust-events-stages-ltd>

See you in the sandpit!

We are delighted in this issue of **Building & Construction review** to showcase the talents of **Sandpit Creations** with our **Commitment to Excellence**.

Fibre glass bears

The botanic garden at Wakehurst: Royal Botanic Gardens has over 500 acres of wild flower meadows, woodlands, gardens and a nature reserve, attracting thousands of visitors annually. During October half-week last year, it set the scene for an autumnal family adventure: 'We're Going on a Bear Hunt' by national treasure and children's author Michael Rosen. Families from all over the UK arrived with backpacks and wellies in search of a bear to excited cries of 'swishy, swishy' and 'squerch, squerch.'



The much-loved children's story was brought to life, through the trail weaving past the Autumnal birch trees in Bethlehem Woods, towering Wollemi Pines in Coates Wood and stunning reflections of Westwood Lake.

The talented team at award-winning



Sandpit Creations were behind the genius design and creation of the two 2-metre-tall bears and beautiful river installation. The bears were made using 3D modelling, CNC modelling and fibre glass finishing, whereas the river was imaginatively created using bright, blue ribbon tied to trees.

"It was great fun, creating part of the trail for this children's classic story. Our team of creatives came together to design and install the bears and river, thinking through the eyes of children to create a magical landscape." - explained Director Dan Barr.

From bear expeditions, Alcatraz & Moonshine Salon, to Sherlock Holmes' Museum props, the team has been worked on an eclectic range of projects, bringing narrative storytelling to the foreground.

Diverse creative skillset

The diverse team of creative/concept designers, scenic artists, textile specialists, creative technologists, prop makers, carpenters, sculptors and metalworkers had largely worked together previously on the iconic Crystal Maze Live Experience. Sandpit Creations Founder and Director Dan decided to fly solo, bringing much of his original production and set design team with him and started the company in 2023.



The company's name pays homage to Dan's favourite directors: The Cohen Brothers- famous for classics like 'No Country for Old Men' and ' Fargo'. The directors famously attribute their trademark quirky filmmaking to artistic freedom- "The movie people let us play in the corner of the sandbox and leave us alone." This resonates with Dan and his team who pride themselves on playful narrative concepts embedded into sets, props, costume pieces, to whole show designs and immersive theatre attractions.

"One of our strengths is that we're a young, diverse team, with tons of experience and have worked together for a long time. Our project management style is flawless as we intuitively know how to work as a team.

We've worked on everything from corporate pop-ups, to museum work, theatre sets, outdoor attractions and bars/pubs. We naturally think outside the box and love non-standard build designs. As an independent company, we bring vitality, innovation and imagination."



Award-winning

Since the company's inception in 2023, they've worked with big players like Samsung, Doc Martens, Aardman, Cupra and Kew Gardens and bagged a finalist nomination for The Access All Areas Event Production Awards: 'Ones to Watch Category.' More recently, the epic team won the 'Most Innovative Theatre & Events Creative Workshop 2024' in the South East England SME News Enterprise Awards, proving they are trailblazing creative innovators.

Immersive bar experiences

In immersive theatre, the set and environment are paramount- creating

new worlds for the audiences and this technique is now found in the hospitality industry. Take the Alcatraz prison bars for example, found in major cities like London, Bristol, Liverpool, Manchester and Birmingham. Inspired by the real-life Alcatraz prison, this immersive theatrical cocktail bar encourages 'inmates' to smuggle liquor in to make prison-worthy cocktails, whilst trying to escape the watchful eye of the Warden. These authentic, recreational experiences have proved very popular with pundits and Inventive Productions, the team behind Alcatraz has now opened Moonshine Saloon in Liverpool and London.

The Wild West themed bars take immersive theatre to another level, with swing doors and costume hire from the Deputy Sheriff, Mayor to Brothel owner! Sandpit Creations have worked on the set design for both Alcatraz and Moonshine Saloon,

"What a great experience! We were in our element here, with narrative build concepts. The result is a truly authentic, immersive experience with guests really feeling like they were in the Wild West! This is an exciting direction for the bar industry to be moving in- we get to utilise our creative design skills and guests gets added value for money on an evening out! It's a win-win!"



Sherlock Homes: micro-electronics

The Sherlock Holmes Museum in London is dedicated to the intrepid, global sensation: fictional detective Sherlock Holmes. Originally written by author Arthur Conan Doyle between the late 19th century until early mid -20th century, the books have continued to inspire films and TV series. The museum was founded in 1990 and welcomes fans from around the world each year. As part of a recent expansion, museum staff commissioned Sandpit Creations to design and



install new features in two floors on the third floor: one dedicated to Sherlock Holmes in film and TV and one to the author.

"The Arthur Conan Doyle room has been great fun- we have used micro-electronics to create moving, illuminated props in the room. We asked actors to do the voiceover for the author's life story and as throughout the narration, aspects in the room come to life, like the house and wooden toy Tiger. It's a really magical experience, that will be appreciated by Sherlock Holmes fans everywhere."

The future for Sandpit Creations

With a talented pool of creatives and a prestigious award nomination under their belt, we wondered what was next for the London-based company.

"We love working in London but want to travel further afield and work on exciting projects across the country.

We think that the immersive theatrical cocktail bars like Alcatraz and Moonshine Saloon will pave the way for similar ideas possibly in hotels or restaurants- offering diners a gastro-immersive or weekend-hotel immersive experiences. We would love to be part of that movement or the Putt Putt Noodle Adventure Golf currently sweeping the nation. We are open to commissions across all sectors from corporate pop-ups, outdoor themed attractions, theatre designs, to museums and can happily work on specific briefs or come up with our own ideas."

If this has sparked your imagination, see the website below for more details:
T 07547 352391
info@sandpitcreations.com
https://www.sandpitcreations.com
#seeyouinthesandpit



Why companies around the world are choosing **TileCentral UK** as their **Quality Asian Tile** supplier



In this issue of Building and Construction Review we have recognised TileCentral UK for its Commitment to Excellence in supplying Quality Asian Ceramic and Porcelain Tiles for the Construction Industry.

Based in Stoke-On-Trent, Staffordshire which is known as the historic ceramic capital of the UK, TileCentral UK is a family-owned B2B company that specialises in supplying quality Asian ceramic and porcelain tiles.

Since its establishment, TileCentral UK has strengthened its workforce and facilities, and now has its own offices and staff based in the major Ceramic clusters of South East Asia, India and China. "As a family-run business we also own a raw materials factory so we have a great relationship with the tile producers in Asia. We are proud of the fact that we can provide the safest, most secure route to accessing this dynamic continent," expressed Danny Bowers, Director at TileCentral UK.

The company supplies to a vast range of customers from distributors and shop builders to developers nationwide, and more recently has started supplying some major projects throughout the UK too. These projects include developments, restaurants, apartments, new build houses, and many more.

After just 9 months of being in business, TileCentral UK hit an astronomical milestone in its short history. This small family-run

company began importing quality Asian tiles in April 2022 and is already supplying goods internationally. This successful partnership came off the back of Danny identifying a gap in the market at a time when many UK companies were buying from European countries.





So far to date, TileCentral UK imports eight containers which hold 24 pallets a month – equalling close to 1,440m² of tiles per container. Off the back of this success, TileCentral UK has large plans to expand.



“We are looking to confidently grow our tile ranges as well as to expand our showroom here in Stoke-On-Trent. Combined we have over 50 years’ experience in the ceramic sector and having family overseas working with our partners is very important.” mentioned Danny.

We work hard to deliver great quality at prices cheaper than retail

Professional, determined and passionate were three words that Danny described the company as, and its clear to see why. In such a short period of time, TileCentral UK has developed an extensive portfolio that comes hand in hand with some of the best technical knowledge and expertise in the industry and a customer service that guarantees quality and consistency.

TileCentral UK offers some of the world’s highest quality brands and products such as: Technical Porcelain, Mosaic, Ceramic Floor Tiles, Ceramic Wall Tiles, and Polished Porcelain. All these products can be used in a number of different locations including Airports, shopping malls, Universities and Education Institutions, Offices, Vehicle Main Dealer Showrooms, Restaurants, Hotels, and Residential Homes.

Some of their most well-known work has been recognised all over the world and includes partnering with large global brands such as KFC in South Africa, McDonalds in South Africa and Malaysia, Eden Hotel in Bangladesh, BMW in Malaysia and Singapore, Toyota Car Showrooms in South Africa, Darwin International Airport



in Australia, Food Bank Central Office in Australia, King Saud University Hospital in Saudi Arabia, Cascada Mall in Lebanon, and many more.

The new website – www.central-tiles.com – has been designed to support all customers with any bulk orders. TileCentral UK also stock a large range of ROCATEX products that are developed and manufactured to the highest levels of performance. From standard set adhesives to rapid set adhesives, grouts, levelling compounds, primers, anti-fracture matting and specialist waterproofing solutions, you will find a full range of tile and stone care products from ROCATEX on pallet deals that start directly from £400.00.

Danny and the team are always keen to listen and react to all customers’ wants and needs, therefore, if you are looking for a specific product or brand that is currently not stocked, as a family-run business they always welcome customer suggestions and do the best they can to find the right solution for you.

For more information, see below:
T 01782 226166
Info@tilecentral.net
www.central-tiles.com



SUSTAINABLE BUILDING MATERIALS FROM FOUNDATION TO RIDGE



WINNER OF THE SUSTAINABILITY PRIZE
 SMALL PROJECTS 2023



Creating quality low energy architecture requires a dedicated, knowledgeable team from initial concept right through to finishing touches. Ecomerchant is a key part of that team for Charlie Luxton Design. Our values align, creating good buildings that perform and last whilst respecting our environment.

Charlie Luxton

Principal, Charlie Luxton Design

Black Barn Studios by
Charlie Luxton Design
Winner of Architects' Journal
Sustainability Prize 2023



Stuart Canvas



Need more covered space or need to protect your stock from the weather?

Stuart Canvas have produced retractable tunnels and semi-permanent buildings for the industrial sector for over 50 years.

Retractable Tunnel buildings are ideal for additional storage space and are a perfect addition to any workshop or business. Our Tunnels are a perfect solution for creating



designated work areas and can be adapted to suit any operation, including spray paint booths and quarantine areas.

Whether large or small, fixed or retractable, Stuart Canvas can offer a solution to your storage needs and advise on how to create the best additional work space both internally or externally. Our Tunnels can be produced as mobile or static workshops and can be designed to be easily dismantled and assembled should they need to be relocated in the future.

Contact us to find out how we can help:
T 01925 814525
www.stuartcanvas.co.uk

Surveytech now offering Matterport rental service

Surveytech, the surveying equipment company, has announced that it is offering the Matterport range of scanners alongside its hire fleet from brands such as Leica Geosystems, Geomax and Screening Eagle.

Matterport is the leading platform for 'digital twins' of the built world, allowing users to scan a space, and then without any specialist knowledge or high-performance computing power, it can be processed in the Cloud to create an immersive virtual tour.

The Matterport model, which consists of a full 3D model of the space as well as the virtual tour can be accessed on the Cloud by whoever the user wants, and other deliverables downloaded like an e57

pointcloud, CAD drawing or full 3D model for programs like Revit.

If the user employs the Matterport Pro3 camera, which is available for hire as well as sale from Surveytech, then dimensions of the space are captured to an accuracy of 20mm at 10m scanning distance. At this level

of accuracy, Matterport scanners are able to be used for most design purposes in architecture, engineering and construction.

This is why Resi, the UK's leading home extension company,

have recently adopted the Pro3 as their scanner of choice for all their projects. If you'd like to find out more or hire for yourself, you can contact the experts at Surveytech below.

Contact
<https://survey-tech.co.uk>



The Hot Water Specialists – Adveco



Adveco is the UK's specialist provider of low-carbon hot water systems to the building services industry. Founded in 1971 - and recognised by BSRIA as the instigator of direct gas-fired water heaters in the UK - today, the company remains a proudly independent, engineering-led business with a strong focus on innovation and system design.

With a clear focus on the often complex issue of delivering sustainable hot water at a commercial scale Adveco can seamlessly react to rapidly changing commercial demands. The application design department works alongside a nationwide sales team and service network of expert field engineers.

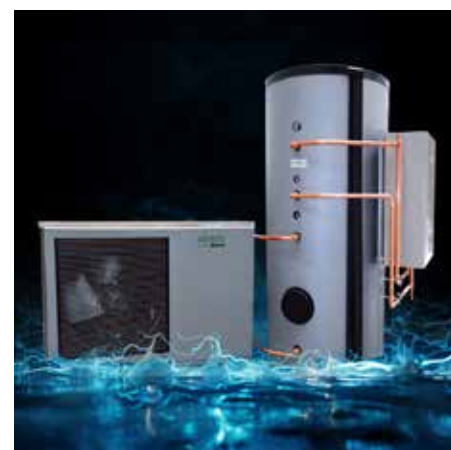
Together they are helping deliver a vision of lower carbon applications that leverage heat pumps, solar thermal and electric water heating - mainly packaged in hybrid and off-site constructed systems to help support net zero strategies.

As a result, Adveco touches every part of a UK resident's life. It supplies hospital wards and was instrumental in the rapid set up of COVID-19 wards and test laboratories. Schools, colleges, and universities use it systems, as do offices, hotels, leisure centres, stadia, concert venues, bars, restaurants, and care homes. Adveco has supplied and continues to support close to a thousand commercial solar thermal systems in the UK, more than any other supplier. It also offers the largest range of water cylinders in the country, these crucially act as the batteries in sustainable applications, storing and releasing thermal energy on demand.

Adveco continues to innovate with award-winning metering services which dramatically cut implementation costs on

sustainable systems, as well as its award-winning FUSION system. This multi-variant electric water heating system smartly combines heat pump, cylinder, electric boiler, and controls to deliver a compact, fast to install, easy to maintain system which cuts emissions, reduces reliance on grid energy and effectively solves the otherwise costly issue of limescale damage experienced in hard water areas.

www.advenco.co



Ensure your housing development is market-ready with **Bright Ideas Consulting & Development**

In the ever-evolving landscape of construction, Bright Ideas Consulting & Development offers the help and support needed to organisations requiring assistance in delivering their development programs and ambitions.



Bright Ideas can advise and guide you on the best way to tackle strategy, public sector and Home England

issues, scheme risk analysis and appraisal, design, cost, and procurement.

Founder, Martin Hawthorne has over 30 years' experience in the industry and comes highly sought after as one of the best and most highly-qualified housing development professionals in the UK.

When it comes to project development and management, Bright Ideas can help to tackle any issues you might face. Whether you're looking for a reputable second opinion on an important scheme or in need of some help getting a project off the ground,

Bright Ideas is always on the lookout for new sites to develop. In the world of New Home Development, Bright Ideas is keen to progress further and is looking for small, niche sites for sale. Alternatively, Bright Ideas also offers a service for larger joint venture arrangements, so if you are in need of a partner, some advice or looking to sell a site, get in touch with Bright Ideas below.

Contact
T 07714 412689
Info@brightideasdevelopment.co.uk
www.brightideasdevelopment.co.uk

Belisha Beacons and Feeder Pillars with next day dispatch from stock

We keep stocks of our mains powered Belisha & Refuge Beacons including spares and retro fit accessories. You could receive your order of our ever reliable; mains powered AmberGLO or our illuminated column version – the OlympiadIPB in just a few days. We also have stock of our LED Beacon Flashing Units – both pre-wired and BC22 Bayonet fitting. These retro fit into any Belisha gallery. You can also purchase spares, accessories and extras like our Lumos4 LED Crossing Spotlight and Courtesy Shields. Our newest Solar Powered Belisha will be available soon!



Please see: www.fisherandcompany.co.uk to view our great range of products which also include Lighting & Sign Brackets and Electrically Insulated Digging Tools. We're ISO 9001:2015 Quality Certified for your peace of mind. So, for a Quote for your latest project please contact us on: 0333 666 2122 or email: info@fisherandcompany.co.uk.

*Some postcodes and transport services are 3-5 days

We also keep stock of Feeder Pillars in a range of standard sizes and larger Pillars, including GRP. This means you could have your order within 24-48 hours* and not have to wait for weeks. Our bespoke and made to order sizes are available from a super-fast 2 weeks from order!

We've been manufacturing high quality products since 1982 and supply Contractors, Wholesalers and Local Authorities for a wide variety of purposes from highways & streetlighting, outdoor power distribution to car parks, facilities, market stalls, Hospital MRI and EV charging. Anywhere outside that needs a power supply.

The Yoda range

Ingenious were delighted to supply the 'YODA' range of downlights for the stunning New Amano Hotel in Covent Garden, Architect & interiors by Woods Bagot, lighting design by Nulty+. The Yoda range was selected for its Modular system design, install the universal bezels, trimmed or Plaster-in then ANY of the downlights, fixed, directional, snoot or wall wash will fit! allowing market leading flexibility and simplicity of install. The YODA range was very Highly



tooled to ensure cost-effective production, allowing clients to fit feature loaded downlights at project friendly costs.

Yoda LED downlights:

- ▲ Fixed/adjustable/wall-wash/ Snoot/Projector
- ▲ Low-voltage or 240VAC TRIAC dim engines
- ▲ 6/10 or 15W (CRI90-414>844lm)
- ▲ 5x Beam angles – swap on-site!
- ▲ Round or Square bezels
- ▲ Single/twin or triple bezels
- ▲ Plaster-in or Trimmed
- ▲ TRIAC/DALI/Bluetooth Dim
- ▲ ANY BS/RAL colour to order



Yoda 15W Projector

Contact
sales@ingeniouslighting.com
www.ingeniouslighting.com



BELISHA & REFUGE Pedestrian Crossing Equipment

Standard or Illuminated Column – complete and ready to install, or top only. LED Flasher, Pre-Cut adhesive reflective Banding – retro fit spares and accessories



Courtesy Shields



LED Spotlight Lumos4



AmberGLO8 – Standard Belisha Beacon



Sentinel26



OlympiadIPB – Illuminated column



CALL OUR FRIENDLY SALES TEAM NOW FOR A QUOTE: 0333 666 2122

info@fisherandcompany.co.uk
www.fisher&company.co.uk



Nomadic Washrooms: Luxury Shepherds Hut Washroom Hire



Here at Nomadic Washrooms, we specialise in bespoke Shepherds Huts toilet & shower units. In addition to hiring mobile units for weddings, events and festivals, we also build fixed site and semi mobile units for campsites, estates or your garden.

All of our retail shepherds huts are built on custom made steel shepherds hut chassis with authentic looking 'cast iron' style

wheels. The units are therefore movable with a tractor or 4x4 around your site for ease of installation and winter storage. Each unit is built in the same style as our own rental fleet with a corrugated iron external appearance and wooden internal cladding to give that rustic look and feel. We can also facilitate custom designs and are happy to work with you in creating your perfect Washroom.

The retail units have been designed for hard plumbing. If you do not have access to a septic tank or mains sewer, we can supply and fit a small waste transfer station to pump the sewage to a holding tank.

We are based in Mid Wales but sell our units throughout the UK and even abroad. In our opinion these washrooms are a must at any venue, so if you really want to get your clients talking, these are the washrooms for you.


For more information, please contact:
Mid Wales
T 01938 580057

Oxford
T 01844 443157
www.nomadicwashrooms.co.uk

LUXURY SHEPHERDS
HUT WASHROOM HIRE
& CUSTOM BUILDS


"It's rare for a loo to be a talking point of a wedding but everyone loved the washrooms so much..."

"Our guests don't stop telling us how beautiful these washrooms are..."



NOMADIC
WASHROOMS

LUXURY SHEPHERD'S HUT WASHROOM HIRE



taking orders for custom builds and
washroom hire now!

www.nomadicwashrooms.co.uk

Mid Wales - 01938 580057
Oxford - 01844 391048

Site Geomatics Ltd



Laser Scanning and Validation of the Built Environment

Our 3D laser surveys offer a fast and effective way of recording large amounts of on-site measurement for the purpose of validation of the BIM models to the as built. Minimize unforeseen future costs by incorporating 3D technology into engineering and construction projects.

Topographical Surveys

Site Geomatics we have extensive experience of carrying out geomatic surveys, across a range of sectors and for all sizes of project. Harnessing the latest survey technology means we can deliver data quickly, in detail and in different formats.

Building Surveying

Whether it's floor plans, sections, structural details, or elevations, we survey each element of the property, either independently or as part of a fully connected coordinated brief. Where appropriate, building surveys can also be carried out in conjunction with topographical or underground surveys.

Site Engineering

Our experienced engineers will work alongside your on-site team to manage subcontractors involved in piling, earthwork, groundwork, foundations, river restoration, flood alleviation projects and superstructure workflows ensuring construction proceeds on time and on budget.

validation of the BIM models to the as built. Minimize unforeseen future costs by incorporating 3D technology into engineering and construction projects.

Aerial Photogrammetry

Photogrammetry surveying or Photogrammetry is the study of making accurate measurements with pictures or digital photo images to locate features on or above the earth's surface. By utilizing the latest RTK GPS equipment and DJI Drones we can produce 3D Models which provide detailed information of the above ground topographical features aiding the capturing of existing ground features and models. The application of this information is used to provide precise material management plans, as-built surveys, monitoring of ground movement to name but a few.

Contact
T 07979 646419
ianthomas@sitegeomatics.com
www.sitegeomatics.com

Energy from the ground up

Do you know that because they use freely available heat energy from the ground, Ground Source Heat Pumps (GSHP) achieve higher efficiencies than any other heating system?



By delivering up to 4 times (on average) more heat energy than the consumed electricity to run the unit, a heat pump can reduce a building's heating costs by around two-thirds compared to direct electric heating.

Using a GSHP, businesses can benefit from lower energy bills of up to 70% versus using a traditional gas or electric boiler system.

For businesses that use lots of heat in their operations, a cheaper source of heat is a welcome way to cut energy costs and reduce the carbon footprint.

No buildings are off limits when it comes to renewable energy and combining heat pumps with technologies like solar photovoltaic (PV) systems can create a robust and sustainable energy mix, and depending on your own situation there are various grants which can be accessed too.

Grants of up to £7,500 are available through the Boiler Upgrade Scheme to put towards the cost of a GSHP for a property you own (including a business or

a second home) if you are replacing fossil fuel heating systems – such as oil, gas, electric or LPG.

This means you should see a return on investment fairly quickly, in addition to the ethical move you have made to switch by switching to more environmentally friendly heating systems.

Go Geothermal's range of CTC Ground Source Heat Pumps provide an ideal solution and come with the Made in Sweden guarantee of quality.

And with support available from initial conception through to installation, we are true one-stop-shop for all renewable energy heating needs in agriculture.

Please call us on 01833 720228,
email: sales@gogeothermal.co.uk
or visit: www.gogeothermal.co.uk

Could marine containers be your solution for extra storage capacity or used as secure on site stores?

Lendon Containers is based in the Clapham Common area of London, the company was founded over 20 years ago by the company's namesake Lendon Meaby. Lendon Containers sell and rent marine shipping containers and has built a strong reputation for its containers and boasts an impressive portfolio of satisfied customers throughout a variety of different sectors including: The Army, Local Authorities, Leisure Facilities, Construction, Parks and Garden Centres, Hospitals, Static Storage Centres, Schools, and Utility Companies.

Shipping containers are an extremely cost-effective and flexible storage solution as they are easily transported, opposed to other storage facilities such as warehouse storage.

The company's containers are not solely hired or purchased for their storage capabilities and have been converted by many clients for a whole host of different applications and purposes, including generator units, laboratories, clubhouses, secure site offices, chemical stores, pop-up bars and food stalls.

In terms of the range, Lendon Containers provides containers for

hire and for purchase. The containers are extremely competitively priced and can be rented from as little as £12 a week, plus VAT. Containers available for rent are either 20ft or 40ft x 8ft x 8ft 6ins. Hiring a 20ft container offers nearly 14 square metres – 32 cubic metres – of space.

Maintaining an experienced team, Lendon Containers can help customers with the entire conversion process; from the design of the container right the way through to fitting it out and transporting it to the customer's location. Regardless how big or small the project is, the team at Lendon Containers is always on hand and will guide its customers through every step of the way. There are many examples of previous conversions available for customers, with sample materials and styles available.

A great solution for cost-effective, simple and transportable storage or a unique conversion facility – Lendon Containers provides a plethora of options for customers.

T +44 (0)20 7350 1940
info@lendoncontainers.co.uk
www.lendoncontainers.co.uk



PLAYCRAFT LTD

Softplay, Trampoline Parks, Ninja Warrior, Climbing Walls, Sensory Rooms



A UK manufacturer with a DIFFERENCE where Free Advice & Personal service is key.

Avoid many pitfalls and hit the ground running!

Playcraft Group pride ourselves on sharing years of experience on pertinent Key-Aspects of your Business Project – We're not here to SELL you something you don't need.

Free Advice, Free Floorplans, Free onsite visits

Bespoke Advice, Manufacture and Install to UK Standards.

We are not a 'Design & Install' company, all our products are manufactured in our own workshops.

WHY FREE OF CHARGE – 'ACCURACY IS KEY'

Our objective is for you to arrive at a place you feel comfortable concept agreed at an acceptable price.

You CANNOT properly arrive at accuracy without a site visit and a face-to-face meeting.

Playcraft Group will meet you at your venue free of charge.

SO WHY THE REFRESHING 'NO SALES TALK'

Playcraft Group know 'High Quality Help & Advice' wins business. Playcraft Group's Director & Founder Mike Broadfield has ALWAYS differentiated this way.

Competitors are sales driven you speak with Salespeople who are bonused to sell you something.

Playcraft Group ALWAYS prioritise a "Business Development" approach to Maximise Revenue at Minimum Cost



GET IMMEDIATE HELP & ADVICE FROM OUR DIRECTOR

Contact
 T +44 (0)1792 422818
 support@playcraft.wales
 softplay-manufacturer.com
 The Old Depot, Old Road, Neath Abbey, Neath, Wales, SA10 7LT.

CLIENTS INCLUDE

CALLING ALL ARCHITECTS, LANDLORDS +more

- ✓ **Help your Client even more:** Great Advice built on 40+ yrs experience. ... e.g. Rental Options; £13k pa rental > Could **earn £160k pa** income.
- ✓ ... e.g. Many more 'Onsite Income' ideas (speak with us).
- ✓ **Themed to your Venue/s :** Bespoke Styles & Systems, ANY Space or Shape!
- ✓ **Limitless Design :** Limitless Features, Colours and Styles.
- ✓ **Smarter Systems :** eg. Make the most of your space; especially height!

UK Manufacturer. All-in-House. + Best Value per capita!

GET FREE ADVICE TODAY...

+44 (0)1792 422 818

mike@playcraftgroup.wales

OUTDOOR adventures

TRAMPOLINE SYSTEMS

... Good Health through play

Goland Recruitment Ltd

Here at Goland Recruitment Ltd, we have extensive network and experience in placing exceptional candidates for the role you require. Whether it be in Construction, Retail, Hospitality or Commercial we are at your disposal to do the leg work for you.

Save time and money when recruiting for temporary or permanent/full-time position as we spend a considerable amount of time reading through the specifications and searching for exceptional candidates.

Please give us a call or drop us an email today if you require our assistance and we will do our best to get you the right person for the job at a rate that suits your budget.



Our full time placements fees are normally 12% to 15% depending on the role and the salary, we now however have a set rate for all permanent roles placements of 8% no matter what the salary, but for your first two placements we are running a special offer of 5% across the board so don't miss out.

Please keep us in mind for all your Recruitment requirements, much appreciated.

Contact
T 01908 592001
info@goland.group
www.goland.group

Easyflow

Easyflow offers you with a single point of contact and a turnkey solution for all your underfloor heating and liquid floor screed needs. From designing and installing your underfloor heating, to a full laser survey on site, to the supply and installation of your liquid floor screed.

Benefits of Underfloor Heating

- ▲ Up to 30% lower running costs than radiators
- ▲ Avoid overheating and energy waste - heats more efficiently using just 35-degree water
- ▲ Low carbon footprint
- ▲ Can be used in conjunction with any heat source
- ▲ Completely versatile, lay tiles, carpet, or wood
- ▲ Control remotely

Benefits of Liquid Floor Screed

- ▲ Reduced screed thickness
- ▲ Better heat conductivity
- ▲ Fast drying and thermally guaranteed options
- ▲ Can be force dried
- ▲ Greater compressive strength than traditional screeds
- ▲ Levels survey carried out for accuracy
- ▲ Environmentally friendly

UNDERFLOOR HEATING

We are dedicated to providing our clients with the very best in underfloor heating systems, together with customer care above and beyond expectations. Our experienced consultants are dedicated to investing their time in planning and



designing your underfloor heating system, ensuring that you are supplied with an underfloor system of the very highest standard. At Easyflow good advice and quality products go hand in hand.

LIQUID FLOOR SCREED


Anyhydrite flowing floor screeds are based on a synthetic anhydrite binder rather than OPC Cement giving them many unique benefits over cement screeds, the most obvious difference is their fluid application compared to semi dry cement screeds, but they also offer higher compressive and flexural strength, lower shrinkage, eliminate reinforcement, improve surface finish and greatly improved underfloor heating performance.

FASTER-DRYING SCREEDS

Easyflow can now supply a range of faster-drying products that can offer reduced drying times - 10 days for tiling and 28 days for wooden floors in non-heated floors, in heated floors 14 days for tiling and 21 days for wooden floors.

T 01743 298001
www.easyflow.org





WARDELL LONG LENGTHS







We are an independent family owned and run timber importer based in Goxhill, North Lincolnshire. We mainly specialise in large-section timber, irregular sizes and long lengths and are able to provide the non-standard sizes that many others cannot.

- Specialists in large section timber, irregular sizes and long lengths. Sections 600 x 600 and lengths to 15m
- British and European white wood, red wood, Douglas-fir and Oak
- Delivery nationwide. From full direct loads to small orders, or custom sawn and cross cut to exact specification
- Strength grading C16/C24 to BS 4978
- Planed, treated timber, railway sleepers, tile battens, arris rail, feather edge boards, telegraph poles, glulam and more
- Our customer base consists of timber importers and merchants as well as national chains of builders' merchants

T: 01469 532 922 E: info@longlengths.com W: www.longlengths.co.uk



Find your perfect platform



With 35 years of experience in the access industry, Independent Access Sales will find the platform most suited to your needs. In addition to providing expert experience and bespoke consultancy, they also manage the servicing of the supplied platform through our contract servicing department.

In 2023, Independent Access Sales partnered with Powered Access Giants, Socage, in a collaboration that led to them being the sole provider of Socage machines in the United Kingdom. Not only do Independent Access Sales sell Socage machines, but they are also the sole providers of spaces and servicing, making them your one-stop shop for anything Socage. Due to their after-

sales manner and unmatched customer service, it is no wonder Independent access Sales are reaching new heights within the industry.

As well as Socage Machines, Independent access sales offer a wide range of EasyLift Powered Access. Throughout the power access industry, there must be a machine that suits all jobs, big or small; with such a wide range of machines, Independent Access Sales ensures you find the perfect machine.

Finding the perfect machine can often feel like a daunting task, which is why Independent Access Sales supports you throughout the process with an easy-to-navigate search function on their site, continuous support from their staff and over 35 years' worth of invaluable experience.



In addition to providing an array of machines, Independent Access Sales also offers servicing of any machine across the UK. With engineers based in Aberdeenshire, Liverpool, Norwich, Bristol and London, find comfort in knowing the Independent Access Sales are there to support you in servicing your machine.

Let Independent Access Sales assist you in finding your perfect machine by visiting the website: <https://iasales.co.uk>

INDEPENDENT ACCESS SALES

FIND YOUR PERFECT PLATFORM

T. 07483 246878
E. ENQUIRIES@IASALES.CO.UK
W. WWW.IASALES.CO.UK

Design and Manufacture of Vertical Platform Lifts

Disabled Access Platform Lifts

Screw and nut drive

Designed and Manufactured in the UK

Bespoke Sizes

Custom Finishes

Fully DDA - Part M Compliant

Nationwide coverage

Quality and reliability

Platform Lifts

0116 291 6000 | DALBYPLATFORMLIFTS.CO.UK

Dalby Engineering Ltd, Gloucester Crescent, Wigston, Leicester, LE18 4YQ

Nationwide Louvre Company



Nationwide Louvre Company manufactures high quality aluminium Louvres, Louvred Doors, Louvred Plant Screens, Acoustic Louvres, Acoustic Screening, Aluminium & Timber Brise Soleil/Solar Shading.

Nationwide Louvre Company offers a full supply and installation service to its customers throughout the UK and have completed a number of projects in the Channel Isles and Europe. The business installs bespoke made to measure quality products on residential, commercial and construction projects.

Nationwide Louvre Company specialise in Brise Soleil and louvred plant screening. Brise Soleil projects are supported with computer simulation software to assess the effectiveness of our products in reducing the effects of solar gain on buildings.

Brise Soleil not only enhances the

appearance of a building but will provide a much better living or working environment for the building's occupants, with the added benefit of reducing glare to help with computer work and will reduce the running costs of mechanical ventilation and air conditioning.

Our Screening Louvre Systems are used to hide roof mounted plant and equipment and are available in a range of blade shapes and sizes. Supplied in an enormous range of colours and finishes will screen unsightly equipment and enrich the building façade.

T 01922 457204
sales@nlc-louvres.co.uk
www.nlcontracts.co.uk

Surveytech now offering Matterport rental service

Surveytech, the surveying equipment company, has announced that it is offering the Matterport range of scanners alongside its hire fleet from brands such as Leica Geosystems, Geomax and Screening Eagle.

Matterport is the leading platform for 'digital twins' of the built world, allowing users to scan a space, and then without any specialist knowledge or high-performance computing power, it can be processed in the Cloud to create an immersive virtual tour.

The Matterport model, which consists of a full 3D model of the space as well as the virtual tour can be accessed on the Cloud by whoever the user wants, and other deliverables downloaded like an e57

pointcloud, CAD drawing or full 3D model for programs like Revit.

If the user employs the Matterport Pro3 camera, which is available for hire as well as sale from Surveytech, then dimensions of the space are captured to an accuracy of 20mm at 10m scanning distance. At this level

of accuracy, Matterport scanners are able to be used for most design purposes in architecture, engineering and construction.

This is why Resi, the UK's leading home extension company,

have recently adopted the Pro3 as their scanner of choice for all their projects. If you'd like to find out more or hire for yourself, you can contact the experts at Surveytech below.

Contact
<https://survey-tech.co.uk>



WHITE HORSE CONTRACTORS

SOIL AND WATER ENGINEERING FOR SPORT LANDSCAPE AND ENVIRONMENT



White Horse Contractors have many years of experience working with elite clients and sports teams on flagship projects across the UK. These include the Alexander Stadium used for the Commonwealth Games, Luton Town FC, Watford FC, Queens Park Rangers FC, Guards Polo Club, Eton College, construction main contractors and housing developers, all of whom received full support of our in-house, dedicated, highly professional team.

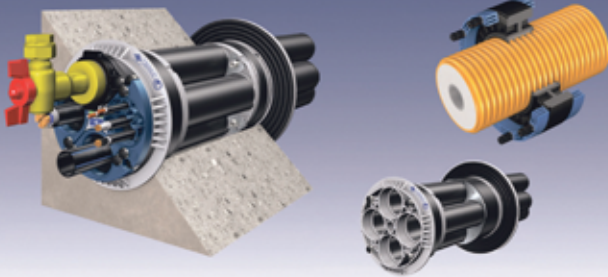


For more information call
 ☎ 01865 736272 or email | ✉ whc@whitehorsecontractors.co.uk
www.whitehorsecontractors.co.uk

Case study



Service Sealing Solutions Ltd – suppliers of DOYMA products



Service Sealing Solutions Ltd are the sole UK distributor of DOYMA products. Wherever services are installed through walls, ceilings or floors, penetrating water may cause damage to buildings. Lack of attention to the points of entry of pipes and cables into the building can have serious results: damp cellars, equipment damaged by water ingress and high repair costs. Service sealing systems ensure professional and perfect pipe sealing, thus presenting excellent preventative measures against structural damage.



01952 510050 www.servicesealingsolutions.co.uk
sales@servicesealingsolutions.co.uk

C40 Curaflex Doyma Gaskets

One of the UK leading installers of pre-insulated district heating systems, Vital Energi Utilities Ltd, use Doyma Curaflex C40 Gaskets to provide a water and air tight seal for all below ground building entries. The specialist installations can be subject to slight movement through expansion and contraction as the system heats and cools.

The Curaflex C40 Gasket is designed to accept the axial movement that may occur during the operation allowing Vital Energi to seal both the opening of the

building façade as well as the HDPE outer-casing.

Vital Energi's Managing Director, Ashley Walsh, noted, "This provides our installation with an excellent termination. It provides confidence both to ourselves and our clientele that we'll leave the fully installed works sealed from any moisture ingress while providing a product that has the flexibility and capability to work alongside our very complex pre-insulated products."

For more information visit: www.servicesealingsolutions.co.uk

Leading Provider of Piling Services



Making use of top-of-the-line drilling rigs and equipment to bore deep into the ground to create secure foundations that will last for years to come, Burnside use a meticulous strategy to install driven piles using a hydraulic hammer or vibratory hammer, depending on the site conditions and project requirements.

Burnside Plant is a proud Scottish piling installation company that has established a sterling reputation for delivering high-quality work throughout the United Kingdom. With a strong focus on excellence and precision, it has become synonymous with reliability and expertise in the industry.

Specialising in a variety of piling installation services that include tubular and sheet piles, driven piles, and mini pile installations, Burnside Plant is equipped with the latest technology and equipment to ensure that each project is completed safely, efficiently, and to the highest quality.

With a steadfast commitment to reliability, innovation, and customer satisfaction, Burnside Plant Hire Ltd sets the standard for excellence in the field of building products and services.

At Burnside Plant safety is paramount. Adhering to the highest standards of safety protocols and procedures to ensure the well-being of its employees and clients, each team member undergoes extensive safety training and is equipped with the latest safety gear and equipment. Additionally, Burnside conduct regular safety audits to ensure that its safety program is effective and up-to-date.

For all your piling needs, contact Burnside today to schedule a consultation and to see how it can help with your next project.
T 0141 647 9331
T 01397 532019
enquiries@burnsideplant.co.uk
<https://burnsideplant.co.uk>

BURNSIDE
Sheet Piling Contractors

BURNSIDE PILING SPECIALIST

PILE HIRE / SALE AND INSTALLATION
 Foundation piling sheet piling movax specialist | Tubular Piling

T: 01416479331 E: enquiries@burnsideplant.co.uk
www.burnsideplant.co.uk

Sustainable timber cladding

Contemporary construction demands sustainable, functional and aesthetic building materials. Our premium timbers meet these specifications and add a timeless quality to interiors and exteriors.

Shou Sugi Ban®

Inspired by Japanese Yakisugi timber preservation, Exterior Solutions Ltd created Shou Sugi Ban®. In addition to the traditional blackened, cracked finish, our finish options bring the technique up to date.

Inspiring range of finish options

If blackened wood is too dark for your project, our collection includes a selection of mid to light-grey tones. The smooth, subtle finish of Kebony Radiata and Yūkari Numachi are popular options.

Alternatively, for a natural wood finish, Accoya® Tenki and Larch Shiberiata showcase the beauty of timber grain. These add a warm, tactile quality to garden buildings and rustic-style retail stores.

For a splash of colour, the peacock tones of Accoya® Tobu, the deep red of Yūkari Kōsui or our vibrant range of Douglas Fir finishes create unique and impactful hotel and restaurant interiors.

All finishes enhance the durability of the



timber by drawing out natural resins. These provide a moisture, rot and insect-resilient barrier to minimise maintenance. It's a practical and visually desirable way to elevate modern builds and heritage renovations.

Timber cladding options

In addition to Oak, Larch and Douglas Fir, the Shou Sugi Ban® range includes Kebony and Accoya®. These modified timbers are exposed to a chemical treatment to enhance stability and durability.

We supply Shou Sugi Ban® with installation instructions, matching tipped screws and a tin of finish treatment for cut lengths. These ensure a professional finish can be achieved on every project.

[Click here to download the Shou Sugi Ban® brochure.](#)

[Contact Exterior Solutions Ltd on 01494 711800 for samples and quotes.](#)

Introducing the Eco Clipper FM343



Eco Clipper is known for its efficient and quiet electric mowing systems to maintain large lawns. The unique Eco Clipper mowing system allows it to mow the lawn even in less than optimal conditions, such as with wet grass and weeds.

To meet the demand for more lightweight mowers suitable for most park tractors from 40 hp upwards,

the Eco Clipper FM343 has been developed. This three-part Eco Clipper front mower cuts 343 cm wide and folds to a transport width of 170 cm. As with the EC-FM4, electricity is provided by a PTO-powered generator behind the tractor.

[Contact www.ecoclipper.com](#)

OLYMPUS CREW

WORKING ON SOME OF THE WORLD'S MOST PRESTIGIOUS EVENTS

WE ARE A CREWING COMPANY FOR THE CLIENTS AND FOR THE CREW. WE ENSURE THE BEST SERVICES FOR YOU.

OLYMPUS CREW
07904903452

- We can cater for any job, big or small, offering a high level of service at affordable price
- We have a diverse skillset including carpentry, audio visual and with each member having a positive, can do attitude.
- We have forklift and IPAF operators

t: 07904 903 452 e: info@olympuscrew.co.uk
www.olympuscrew.co.uk

Efficient electric mowing systems for maintaining large area turfgrass

Eco Clipper FM343 for compact tractors
www.ecoclipper.com

BespokeCrete

BespokeCrete creates custom and bespoke furniture, outdoor kitchens, kitchen worktops, waterfall islands, patio sets, indoor table & bench sets, coffee tables, baths, sinks and so much more. Every item is custom built, by hand - using local materials and trades, in our Norfolk workshop. BespokeCrete crafts furniture from wood or steel - that is coated in our full Microcement system, over several days - creating a strong and fully waterproof surface that is heat, stain and scratch resist.



personal and unique piece of art/ furniture.

With our team of in-house steel fabricators and master carpenters - we can bring our customers design concepts to reality. At BespokeCrete - we have a range of stunning furniture or we can create a completely bespoke design of your choosing.

Bespokecrete work with designers, architects, contractors and the general public with a large proportion of our work being completely bespoke. Microcement is available in a multitude of colours - now with the option to colour match to RAL, Farrow & Ball, Dulux, Little Green, Fired Earth and Pantone colours.

For more information, please see below:
T 0800 0614157
info@bespokecrete.com
www.bespokecrete.com

Microcement is a thin 2-3mm cement and resin hybrid coating that can be applied to a multitude of surfaces. It is great for inside or outside use, creating stunning furniture from wood and coating it in Microcement - creating a

RYNO presents non-combustible decking that actually looks like wood



RYNO® proudly launched its **visually stunning, Vitrified Composite decking board**. Boasting a sensationally realistic wood-effect finish, it provides architects, designers and specifiers with outstanding Class A1 performance while replicating a classic timber aesthetic, indistinguishable from its natural counterpart.

and resistant to moisture, fading and weathering, require very little maintenance, are well-suited to remediation projects and represent an effective alternative to conventional decking solutions, where there can be no compromise between aesthetics and performance.

Available in a **selection of striking wood-effect finishes**, ranging from Brazilian Walnut to Himalayan Birch, RYNO states that, "All finishes achieve a stunningly authentic hard-wood feel, and the various hues and tones ensure our boards can seamlessly integrate into a wide range of projects."

All Vitrified Composite™ finishes received the 'low slip risk' classification, making this material an excellent choice for all high-traffic terrace applications.

RYNO's Class A1 fire-rated wood finish was inspired by nature and designed for life: take a closer look at the **RYNO TerraSmart® Vitrified Composite** decking system.

Vitrified composite decking boards are extruded from a composition of clays and feldspar and fired (or vitrified) in the same way as porcelain. They are stain and fire resistant,

T 0203 9673500
sales@rynogroup.co.uk
www.rynogroup.co.uk



Peace of mind for your park and leisure home

- ▲ **Surveys & Inspections**
- ▲ **Annual Service Plans**
- ▲ **Interior Finishing (post sitting)**
- ▲ **Aftersales works**
- ▲ **Refurbishment works**



Tel: 01509 807115
Email: info@clearviewphs.co.uk
Web: www.clearviewphs.co.uk



COMPACT TRACTOR ATTACHMENTS

farmtechsupplies.co.uk
01420 520510



the home of **FARM TECH SUPPLIES**
 COMPACT TRACTOR ATTACHMENTS

Monitoring your environmental impact couldn't be easier!

With Quantum Outdoor from Cirrus Research.

Get instant access to your **noise, weather, air quality and ground vibration data** with Quantum Outdoor from Cirrus Research, our first fully integrated cloud-based comprehensive environmental monitoring system.

Quantum Outdoor can work in any environment, including providing long-term remote noise and environmental monitoring for the construction and demolition industry.

Discover remote environmental monitoring:
bit.ly/QuantumOutdoor





BOOK YOUR CPD TODAY
fireglassuk.com/cpd-seminar/

Fire Glass

UK

TECHNICAL FIRE SAFETY GROUP



LET US TAKE THE HEAT OUT OF SPECIFYING FIRE-RATED GLASS.



WE ARE THE UK'S MOST SPECIFIED FIRE-RATED GLASS COMPANY FOR A REASON.

- WE CAN HELP WITH SPECIFICATION
- STOCKISTS OF ALL MAJOR BRANDS OF FIRE-RATED GLASS
- FIRAS CERTIFIED INSTALLATIONS



WE WON'T BE BEATEN ON PRICE FOR:
 SAFETY
 QUALITY
 OR SERVICE
THAT'S THE FIRE GLASS PROMISE

WE'VE GOT YOU COVERED...



MIDLANDS
0121 667 9089



NORTH
0161 532 8371



SOUTH
01206 805 922



EAST
01773 712 920



WEST
01174 528 800



SCOTLAND
0131 526 4141



INSTALLATION
0121 667 9089



firas certifiire



Acclaim Accreditation



0121 667 9089
WWW.FIREGLASSUK.COM



SCAN ME



Bluerun Limited

quality bespoke joinery since 1991

QUALITY, CUSTOM MADE JOINERY MANUFACTURERS



Commercial

Bespoke commercial joinery services, internal and external: windows, doors, shop fronts, bars and pubs, offices and reception areas

Domestic

We provide a complete range of custom domestic joinery, internal and external: windows, doors, fitted furniture, gates, decks, and even wendy houses!



Please visit our website:

www.bluerunltd.co.uk

Tel: **01799 599995**

Email: dee@bluerunltd.co.uk

f [bluerunltd](#) **@** [bluerun_joinery](#)

