



*Building & Construction Review*

# ISSUE 414

## December 2024

0121 824 4743 | [buildings@bestpracticeuk.co.uk](mailto:buildings@bestpracticeuk.co.uk)  
[www.bcruk.co.uk](http://www.bcruk.co.uk)

Search for us on LinkedIn  and follow us on  
Twitter  [bcr\\_uk](https://twitter.com/bcr_uk)



**Service Sealing Solutions**  
Pages 6-7



**Direct Hoist**  
Page 9



**Swantest**  
Page 10



**Table Place Chairs**  
Page 24

## Timber frame homes and extensions offered by Vision Development

Discover the warmth, strength, and timeless beauty of timber frame homes with Vision Development, a family-owned business passionate about crafting quality, bespoke structures that last for generations. Unlike larger, impersonal firms, we take pride in offering a hands-on, personalised service, guiding you through each step of the building journey with care, expertise, and transparency.

Timber frame construction offers significant advantages: it's not only eco-friendly and sustainable, but also highly energy-efficient, helping to lower utility bills and create a healthier, more comfortable living space. With exceptional durability and natural aesthetic appeal, timber frames provide a beautiful blend of modern and traditional that suits any landscape.

At Vision Development, every project is managed by skilled craftspeople who bring years of experience and a passion for timber to the table.



From initial consultation through to final construction, you'll work directly with our family team, ensuring your vision comes to life exactly as you imagined. We believe that a home should be as unique as the family it houses, which is why we focus on detail, flexibility, and sustainable practices. Experience the difference of a family-run business dedicated to quality, integrity, and craftsmanship in every beam.

**If you are looking to build your dream home or extension in 2025 and would like to see how we can assist, you can email us at: [info@vision-dsl.com](mailto:info@vision-dsl.com)**

We invite you to explore our website and discover the stunning timber frame homes and extensions we've crafted for our clients. Their glowing 5-star reviews reflect the joy and satisfaction that come from our passion for excellence.

[www.timber-frame-suppliers.co.uk](http://www.timber-frame-suppliers.co.uk)

## Site Geomatics Ltd



### Topographical Surveys

Site Geomatics we have extensive experience of carrying out a range of sectors and for all sizes of project. Harnessing the latest survey technology means we can deliver data quickly, in detail and in different formats.

### Building Surveying

Whether it's floor plans, sections, structural details, or elevations, we survey each element of the property, either independently or as part of a fully connected coordinated brief. Where appropriate, building surveys can also be carried out in conjunction with topographical or underground surveys.

### Site Engineering

Our experienced engineers will work alongside your on-site team to manage subcontractors involved in piling, earthwork, groundwork, foundations, river restoration, flood alleviation projects and superstructure workflows ensuring construction proceeds on time and on budget.

### Laser Scanning and Validation of the Built Environment

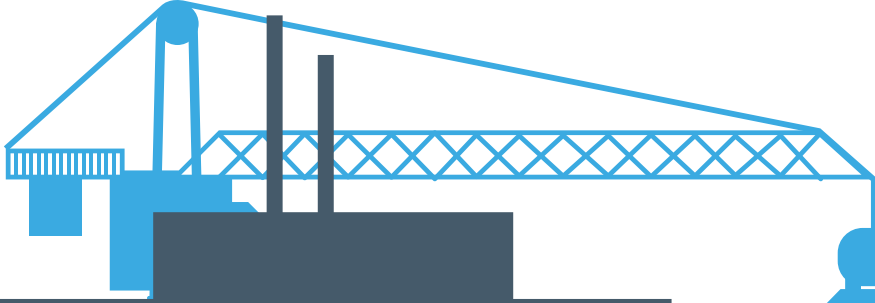
Our 3D laser surveys offer a fast and effective way of recording large amounts of on-site measurement for the purpose of validation of the BIM models to the as built. Minimize unforeseen future costs by incorporating 3D technology into engineering and construction projects.

### Aerial Photogrammetry

Photogrammetry surveying or Photogrammetry is the study of making accurate measurements with pictures or digital photo images to locate features on or above the earth's surface. By utilizing the latest RTK GPS equipment and DJI Drones we can produce 3D Models which provide detailed information of the above ground topographical features aiding the capturing of existing ground features and models. The application of this information is used to provide precise material management plans, as-built surveys, monitoring of ground movement to name but a few.

**M 07979 646419**  
[ianthomas@sitegeomatics.com](mailto:ianthomas@sitegeomatics.com)  
[www.sitegeomatics.com](http://www.sitegeomatics.com)





# CONTENTS

## On the cover



## Site Geomatics

1



## Kedel

3



## M&M Kent Services

4



## Service Sealing Solutions

6



## Swantest

10

Commitment to Excellence Award 3

Building Products & Services Innovation Award 4-5

Company of the Year 2024 6-7

End of Year Review 8-9

Commitment to Excellence Award 10

Building Products & Services 11

Landscaping & Outdoor Building 12-14

Building Products & Services 15-24

## Hello & welcome to Issue 414 of BCR...

Welcome to our December issue.

As modular building increases across the country, housing associations and builders are switching to prefabricated modules. Muti award-winning Kedel Ltd receives our Commitment to Excellence for its excellent range of recycled plastic products like fence panels and posts. Find out how these fencing products prevent rot, reduce carbon footprint and save on maintenance costs on page 3.

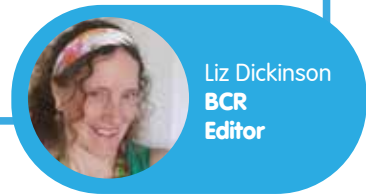
Service Sealing Solutions Ltd is our Company of the Year 2024 on pages 6-7. Correct sealing helps keep buildings' utilities accessible, making any maintenance easier to complete with little disruption. Service sealing systems also prevent structural damage because wherever service ducts are installed through walls, ceilings or floors, penetrating water may cause damage to buildings.

When it comes to dry lining, plastering, rendering, SFS, framing, screeding and suspended ceilings, M&M Kent Services Ltd stands out for exceptional quality and customer service. Awarded our Building Products & Services Innovation Award, this company has been working on the luxury Chelsea Barracks apartments recently. Read more on pages 4-5.

If you're looking for comprehensive site solutions, specialising in structural testing, investigation, and strengthening for complex construction projects, Swantest offers a range of key services. These include: load capacity assessments, geotechnical testing, structural inspections, and specialised hydraulic lifting. The company also provides advanced 3D point cloud surveys, CFRP strengthening, and both balcony and barrier testing, alongside structural surveys and remedial work. Read more about the winner of Our Commitment to Excellence Award on page 10.

Don't forget to send us your latest construction updates and news.

Email us: [buildings@bestpracticeuk.co.uk](mailto:buildings@bestpracticeuk.co.uk)



Liz Dickinson  
BCR  
Editor

## Contacts

### Publication Management

**Sam Morton**  
Sales Manager  
T 0121 824 4743  
[buildings@bestpracticeuk.co.uk](mailto:buildings@bestpracticeuk.co.uk)

### Production

**Robert Sharp**  
Production Manager  
[production@businessandindustrytoday.co.uk](mailto:production@businessandindustrytoday.co.uk)

### Accounts

**Paul Whitaker**  
Accounts Manager  
T 0121 824 4742  
[accounts@bestpracticeuk.co.uk](mailto:accounts@bestpracticeuk.co.uk)

### Editorial

**Liz Dickinson**  
Editor  
[liz@freshmedia-uk.co.uk](mailto:liz@freshmedia-uk.co.uk)

Search for us on [LinkedIn](#) and follow us on [Twitter](#) [bcr\\_uk](#)



# Low carbon products for the growing modular building sector

In this issue of Building & Construction Review, we are delighted to welcome back Kedel Limited with our Commitment to Excellence

Modular building is on the increase across housing associations, helping drive the UK Government's target of 300,000 new homes annually. Using prefabricated modules speeds up the process, improves the build quality, enhances air tightness and hold sustainability improvements.



quick and easy to assemble, and don't require sealants or ongoing maintenance. We have supplied fencing across much of the Partington estate in Manchester, providing a streamlined 'look' across all the houses. The fencing was installed ten years ago and still looks pristine, giving the local residents pride in their area and budget savings for annual maintenance. Housing

Associations work to a five year financial plan and our range mitigates against the repair costs you would need for wooden fencing," explains Dermot Walch, Managing Director.

year financial plan and our range mitigates against the repair costs you would need for wooden fencing," explains Dermot Walch, Managing Director.

The Lancashire-based company manufactures plastic wood made from waste polystyrene and also supplies many other types of recycled plastic profiles from other manufacturers. From tongue and groove boards, plastic sheet materials, decking, cladding, ground reinforcement and drainage grids, fencing and gates, the expert team also makes outdoor furniture such as benches, and picnic tables.

In monetary terms, though the initial outlay is higher for Kedel's fence panels and posts, after 4 years the costs would be recouped from annual maintenance savings on materials and labour required for wood. Kedel has supplied fencing products all over the country from the Isle of Wight to Isle of Skye.

"For housing associations looking at reducing carbon footprint in modular building or large estate investments: using recycled plastic is the perfect choice. Our recycled plastic fence panels and posts are

"The Isle of Skye experiences high winds, with speeds up to 80mph recorded, especially on the exposed coastal areas. This often leads to the Skye Bridge having to close due to strong winds. With these weather conditions, it's important to have robust fencing in place and our fencing panels have all withstood the high winds on the Island.



"It's not just high winds but hot summers that are problematic for fences. The British summers are now markedly hotter due to climate change and that brings the increased risk of native European insects. The Common Furniture Beetle is capable of destroying wooden fences up and down the country. The larvae bed down into the wood and can feed off it for two to four years, with the adults crating flight holes measuring



1.5- 2mm. Our robust, sustainable fencing doesn't attract these beetles and saves housing builders again from costly repair bills."

Wood is becoming an increasingly expensive material and includes long-term maintenance costs. Not only do you need to check it is FSC-approved wood but a large portion of an annual budget will be spent on rot deterioration.

Investing in the recycled plastic fencing products from Kedel prevents rot, reduces carbon footprint, saves on costly maintenance and repairs, is easy to install and is weather-proofed all year round.

**Add Kedel's fencing range to your modular building list today. To view the multi-award-winning product range today, click here: [www.kedel.co.uk](http://www.kedel.co.uk)**



# M&M Kent Services Ltd external framing and

In this issue of Building & Construction Review, we are delighted to showcase M&M Kent Services Ltd as the recipient of our Building Products & Services Innovation Award

M&M Kent Services Ltd is a leading construction company, offering premium dry lining, plastering, rendering, SFS (steel frame system) framing, screeding and suspended ceilings across the London area. Established in 2019, by co-founders Constantin Culii and Igor Kosenko, who together bring a wealth of drylining experience, the team offers top-quality craftsmanship at every level.

Based in Kent, the company has worked on a number of high-profile projects over the years including Dungeness Nuclear Power Station and more recently, luxury apartments at Chelsea Barracks. With over 20 years' industry experience, Constantin and Igor have built up a solid reputation: making M&M Kent Services synonymous with leading quality and exceptional customer service.

We caught up with Constantin and Igor to see how the company has fared over the last twelve months and to find out more about future plans,

"It's been a busy, productive year. We're delighted with our progress on the luxury apartments at Chelsea Barracks for Ant Yapi (UK) Ltd in Belgravia, West London. Famed for its luxury penthouses and exclusive, private amenities, this prestigious residential area is designed around stunning garden squares. It is fast becoming one of London's most desirable postcodes and the transformation from army barracks to opulent living has been nothing short of phenomenal. It goes to show that with careful planning: architects and construction



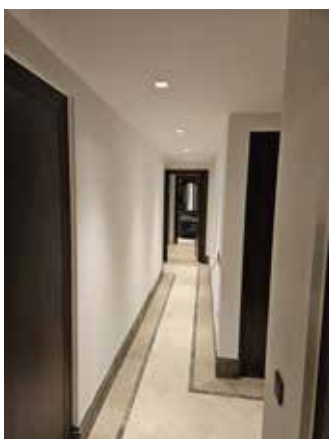
workers can create beautiful residential spaces, with areas for communal spaces, leisure and sporting pursuits, and entertainment, all interwoven. By preserving the historical Garrison Chapel and making it into a community venue, the history of the area will live on.

Our work on Dungeness Nuclear Power Station for client Nuvia has also been really rewarding and allowed us to make use of our 20 years' industry experience.

We attended the trade show: Constructionline marketplace Live North London! this year as exhibitors, which gave us an opportunity to meet new and existing customers. During 2025, we are hoping to grow our customer base further, taking on new and exciting projects and we would like to focus on some charity projects close to our hearts. We took part in the World Cleanup Day on the 20th September, alongside over 180 countries worldwide. Stationed at hammersmith town Hall, with the WKSJ Project, we collected litter from the surrounding area, making a noticeable difference to the streets and pavements. This is an annual global day designed to tackle the growing waste crisis."

With an eye on accredited compliance, M&M Kent Services has achieved ISO 45001, ISO 9001 and ISO 14001, as part of its dedication to health & safety, quality management systems, and environmental management systems, showing a steadfast commitment to safer working, quality assurance and sustainability best practice.

The difference between M&M Kent Services and



other companies though is its Commitment to Excellence. This year, a team from M&M Kent Services attended an accredited course with BASWA acoustic in Switzerland. Award-winning BASWA acoustic is renowned for acoustic ceilings, with its innovative sound absorbing plaster. BASWA acoustic ceilings are so prestigious that they are found in the White House in Washington and famous concert halls around the world. Upon completion of a short course in Switzerland, team M&M Kent Services received a certificate for the installation and repair of BASWA acoustic products.



# ltd: Specialist in drylining finishes



"The BASWA acoustic course signals our commitment to leading, premier products, as part of our customer-centric approach. We have received glowing, positive feedback from our clients regarding our direct communication process. Unlike larger companies, with a long chain of command, we deal directly with the client, ensuring seamless project management throughout. This is really appreciated by our

clients, who have had previous negative previous experiences of poor communication."

M&M Kent Services is built on a solid foundation of knowledge and experience. Constantin alone has 19 years' prior experience working as a dry liner, site supervisor, project manager and contracts manager in the dry lining sector, giving him expert inside knowledge. This skills-based expertise gives M&M Kent Services an edge over competitors, with both Constantin and Igor readily able to discuss industry-related challenges with all clients.

With particular expertise in facades and dry wall installations, M&M Kent Services turns visions into reality, with style and substance. Façades are widely known for protecting against the elements, insulating buildings in the colder months, while cooling them down in the warmer ones and M&M Kent Services offers an extensive range of cladding installations. Fusing aesthetics and functionality, clients can choose from high-end, stunning finishes like metal and stone, which boast of durable protection throughout the years.

Brick Slip installations are a cost-effective, aesthetic solution, which are becoming more popular with architects across the country on larger commercial projects. This approach uses lightweight panels, with veneer brick cuts embedded to the panels. The slips are laid together, then glued in place on a singular panel rather than the traditional



stacking formation. They offer long-term durability, low maintenance, authentic appealing finish and are eco-friendly. Designed to last a lifetime, the natural insulation properties reduce energy costs, making this a superlative choice for today's buildings.



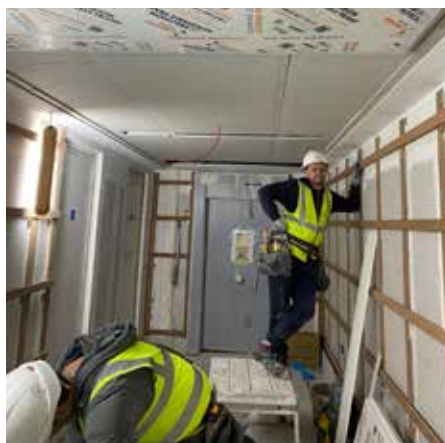
"Our dry wall installations are second to none, with all bespoke designs considered, offer a wide range of versatile options from precision partition walls, to suspended ceilings. If you're looking to maximise interior spaces, we can divide rooms, or create private areas, giving your office or apartment that dream look. Our recent BASWA acoustic training has elevated our knowledge to the highest level,

offering sound absorbing plaster techniques. We take immense pride in all our projects and our dry wall installations are left as blank canvases: ready for carefully chosen paint, wallpaper or even murals. The sky's the limit!"

M&M Kent Services will be at Constructionline marketplace Live! 2025: Thursday 6th May: Sandown Park Racecourse, Esher, Surrey.

To view past and current projects, please view the company's LinkedIn posts: [www.linkedin.com/company/mm-kent-services-ltd](https://www.linkedin.com/company/mm-kent-services-ltd)

Contact Igor and Constantin directly on: M 07412 455655. [info@mmkentservicesltd.co.uk](mailto:info@mmkentservicesltd.co.uk) To view the website, click here: <https://mmkentservicesltd.co.uk>



# Service Sealing Solutions the way in sealing systems

In this issue of Building & Construction Review, we are pleased to feature Service Sealing Solutions Ltd as our Company of the Year 2024

2024 has been a productive year for Service Sealing Solutions Ltd, despite facing some challenges. While market data indicates that many large infrastructure projects have received planning approvals, actual project commencements have declined. However, the company has successfully offset this downturn by capitalising on a rise in large-scale house renovation projects, which has helped mitigate the impact of reduced sales from the slower infrastructure sector.

"We are observing a notable increase in sales and inquiries as 2024 draws to a close, which sets the expectation for an improving market in 2025. Additionally, we have noticed an extended time lapse between the initial quoting and specification stages and the receipt of actual orders," stated Jim McAra, Company Director.

Based in Shropshire, Service Sealing Solutions Ltd is marked not just a distributor but also covers every aspect of a project, required by the contractor. The company was set up by Tina McAra, Company Director. After witnessing a high demand of their services, Tina expanded the company's market reach nationwide, and decided to bring her husband Jim onboard to help grow their distribution footprint.

Correct sealing helps keep buildings' utilities accessible, making any maintenance easier to complete with little disruption. Service sealing systems also prevent structural damage because wherever service ducts are installed through walls, ceilings or floors, penetrating water may cause damage to buildings.

Service Sealing Solutions Ltd supply a range

of different sealing solutions across the UK to the public and private sectors. As the sole UK distributor for the sealing industry's top manufacturers DOYMA and HKD, Service Sealing Solutions Ltd specialises in high-quality service duct sealing systems for utility services and watertight seals.

"Service Sealing Solutions Ltd are the UK agent and distributor for DOYMA GmbH sealing solutions. Recently, we have seen a major push for DOYMA, which is associated with the development of building entry sealing solutions for air source heat pump insulated pipes. The primary development for this year has been the DOYMAfix® engineered building entry sealing system," stated Jim.



The DOYMAfix® incorporates an innovative design that guarantees simple, fast, and safe installation of connection pipes for heat pumps. This product is the first professional above-ground entry for air-to-water heat pumps. It can be installed in a short time.

With this unique system, DOYMA enables thermal to be maintained, transmitted noise from the heat pump is reduced and building air tightness is assured aiding the fabric of the building to meet Part L of UK Building Regulations.

One key advantage of partnering with Service Sealing Solutions Ltd is that the Curaflex range of gasket seals they offer comes backed by DOYMA's impressive 25 year guarantee. "This is class leading and we are not aware of competitors offering a similar guarantee. DOYMA



products were the first of their type and they have had products in the ground since the 1970's. Therefore, the life expectancy of the sealing products, under normal conditions, is in excess of 40 years!" added Jim.

When planning construction projects, several key factors are critical to achieving lasting success, including budgeting, financing, location, zoning, design, and sustainability. Another guarantee from working with Service Sealing Solutions Ltd, is that they contribute to long-

# Service Sealing Solutions Ltd: Leading Sealing Systems for 2024



against environmental wear and tear.

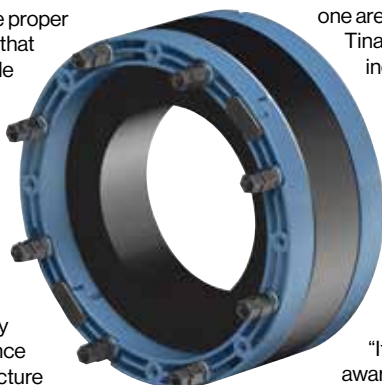
Service Sealing Solutions Ltd also provide HKD systems, now part of DOYMA, which specialise in durable pipe sealing and service conduit solutions. These HKD products, such as KE socketless conduits, KG wall and floor ducts, and KG twin sockets, are designed for up to four bars of pressure resistance. Ideal for embedding directly in concrete without the need for sleeves or site prep, HKD's systems deliver efficient installation for thin-walled concrete applications, including challenging environments like pump sumps. Additionally, this makes them particularly valuable for building projects requiring robust, leak-proof infrastructure.

Products from the HKD range can also be combined with the DOYMA Curaflex® products, in particular, the Curaflex® wall sleeves and other extensive accessories.

Service Sealing Solutions Ltd also specialise in delivering custom sealing solutions for large-scale, complex projects, such as power plants, industrial facilities, reservoirs, and airports. These projects often demand highly specialised, tailor-made sealing systems to accommodate extraordinary pipe dimensions or unique thermal, chemical, or physical requirements. In such cases, they design and implement bespoke sealing solutions to meet the most demanding construction needs.

Customer service is of the upmost importance to Service Sealing Solutions Ltd, and is one area of the company that Jim, Tina, and the rest of the team are incredibly proud of.

term resilience by ensuring the proper installation of sealing systems that keep building cables accessible for efficient maintenance. Their solutions not only minimise disruptions but also protect structures from potential damage by sealing service ducts against water and humidity infiltration in walls, ceilings, and floors. What's more, effective sealing systems enhance the durability of buildings, reduce maintenance costs, and safeguard infrastructure



To continue to provide this exceptional level of customer service is a goal that the company will continue to maintain as we head towards 2025. We asked Jim, how he felt being selected for this award.

"It's nice to be selected for an award, however, awards are not our



## Service Sealing Solutions Ltd

focus. Our focus is to provide excellent customer support to ensure the correct DOYMA products are specified for our customers projects."

All DOYMA products are crafted using cutting-edge design and manufacturing techniques, alongside advanced simulation methods that prioritise safety in specialised constructions. As the exclusive UK distributors for DOYMA, Service Sealing Solutions Ltd provides an unparalleled selection of top-tier products from leading German manufacturers. For access to this wealth of resources, please reach out to Service Sealing Solutions Ltd.

T 01952 510050

[sales@servicesealingsolutions.co.uk](mailto:sales@servicesealingsolutions.co.uk)

[www.servicesealingsolutions.co.uk](http://www.servicesealingsolutions.co.uk)



# SIMPLY SIMONBOX: IP66 Floor Box

Since its foundation over thirty years ago, Gromtec Europe Ltd has developed a reputation for supplying quality custom cable grommet and floor box solutions. Synonymous with innovation, Gromtec has developed many notable, award-winning products such as the Air-Guard® and Air-Block® cable grommet ranges which are used extensively in data centres throughout the UK, Europe & the USA.

In 2012 Gromtec introduced the IP66 SIMON floor box to the UK market. The 'SIMONBOX' proved to be a game changer providing a cost effective and practical waterproof floor box solution. Primarily designed as an 'occasional' floor box, the outlet sits flush in a tiled floor area. When closed the SIMONBOX is watertight, allowing tiled areas to be wet washed when required. The outlet also features an internal drainage system to deal with accidental water ingress, which is useful if the floor box is installed externally or in decking. This pioneering product has been consistently specified by consulting engineers and architects for a wide range of commercial and domestic projects. End users include John Lewis, NEXT Home Store, and



Heathrow and Gatwick Airports.

In early 2025 Gromtec will be launching the second generation of the 'SIMONBOX'. This additional product range retains the main waterproof features of the original product but in a new housing. The new SIMONBOX range is initially available in two finishes, sleek matt black and brushed stainless steel. In answer to the question so often asked over the past 12 years, "Is it available in a double socket version?" The answer now is YES and with an option for additional data sockets.



The SIMONBOX will be available through your local electrical wholesaler.

For more information on the full range of products, see the details below: Call 020 3286 7949 or visit: [www.gromtec.co.uk](http://www.gromtec.co.uk) or [www.gromtec.com](http://www.gromtec.com) or specifically for SIMONBOX: [www.simonbox.co.uk](http://www.simonbox.co.uk)



## Ingenious YODA-2: Specification Simplified

2 Universal bevels, 'trimmed' or 'plaster in' accept any of the following 12 interchangeable options:

- Flush |
- Adjustable |
- Snoot |
- Projector
- Deep Snoot |
- Surface
- Cone Wall
- Wash |
- Eyeball
- Zoom |
- Tube spot
- Flush | Floor
- Washer



Available in 6, 10 or 15W, 5x CCT options, DTW & DW, All CRI 90+ 4, 6, 8, 10, 15, 24, 36 or 50° TIR optics

7x Baffle finish options and

any bezel finish you desire. Accessories: honeycomb, ribbed or prismatic glass lenses.

40 years of designing downlights has resulted in our best ever project downlight solution.



Contact Ingenious Lighting Ltd for more information: M +44 (0)7785 953715 [simon@ingeniouslighting.com](mailto:simon@ingeniouslighting.com)

## Bridging expertise and conservation

Are you looking for comprehensive ecological consultancy services to support your next building or construction project? Look no further than Learn Ecology Ltd.

Whether you need strategic advice, preliminary ecological appraisals, or UAV drone surveys for high-resolution mapping, Learn Ecology's extensive ecological consulting services are available to sites nationwide, including Phase 1 habitat and general faunal surveys, UK Habitat Classification, Biodiversity Net Gain Assessment, and Phase II Protected Species surveys.

Learn Ecology leverages extensive experience in providing strategic ecological guidance to minimise environmental impacts during development. Its services include optimising project layouts to preserve ecologically significant areas, creating mitigation schemes, and offering both on- and off-site compensation strategies. The company's expert ecologists deliver clear and practical reports, such as Ecological Mitigation and Enhancement Strategies

(EMES), Construction Environmental Management Plans (CEMP), Landscape Environmental Management Plans (LEMP), and Species-Specific Mitigation Strategies, ensuring projects meet ecological and regulatory requirements while promoting sustainability.

Founded by expert ecologists and skilled educators, Learn Ecology is dedicated to fostering awareness and involvement in the conservation of the UK's wildlife and habitats. Its mission emphasises making ecological knowledge accessible to a broad audience, empowering individuals and organisations to take meaningful action in protecting the natural environment. Through both education and hands-on consultancy, Learn Ecology bridges the gap between ecological expertise and practical conservation efforts, promoting sustainable practices in various sectors, including building and construction.



T 01926 919419  
[info@learn-ecology.com](mailto:info@learn-ecology.com)  
<https://learn-ecology.com>

# A decade of soaring success

As 2025 approaches, Direct Hoist, a leading specialist in construction hoist hire and sales, takes a moment to reflect on its remarkable journey over the past decade. Founded in 2014, the company has grown from modest beginnings in a garage to occupying spacious new premises, a move that has substantially bolstered its operations.

In 2022, Direct Hoist launched a bespoke training centre that offers familiarisation courses and NVQ Level 2 qualifications in hoist installation. The on-site facility features a 10 metre high training tower, enabling hands-on experience with a two-tonne platform hoist. This immersive training, led by expert tutors, emphasises optimal safety practices in line with the latest industry standards and legal requirements.

The impressive growth of Direct Hoist is a testament to its dynamic and dedicated team. Recognising that their workforce is the backbone of the company, Direct Hoist prides itself on being a committed Living Wage employer, and invests in staff development through NVQ courses, rigorous health and safety training, and specialised manufacturer courses. Additionally, some employees have been trained as Mental Health First Aiders, showcasing Direct Hoist's commitment to the Workplace Mental Health Charter and



prioritising the well-being of its staff.

In May 2022, Direct Hoist became the UK distributor for Electroelsa, an esteemed Italian manufacturer specialising in mast-climbing work platforms, transport platforms, and other construction hoists. This summer, the company showcased a diverse range of Electroelsa equipment at the well-regarded Vertical Days event. They demonstrated innovative safety features, such as the 'missing bolts presence' detection system, designed to enhance safety during assembly.

This year, Electroelsa,

in collaboration with Direct Hoist, has rolled out a series of technological innovations tailored to the UK construction sector.

Moreover, for the past decade, Direct Hoist has maintained a pioneering approach to sustainability. Their fleet of delivery vans is powered by 100% renewable HVO fuel, the company's premises are now powered by renewable electricity, and have joined the .eco community – a collective of over 6,000 environmental advocates focused on promoting positive change for the planet.

With a promising future ahead, Direct Hoist is poised for continued success and innovation within the construction industry.

Please quote code **BCRDH5796**.  
**T 01724 781647**  
[www.directhoist.co.uk](http://www.directhoist.co.uk)

- ▲ HIRE
- ▲ SALES
- ▲ SERVICING
- ▲ PARTS
- ▲ REPAIRS
- ▲ TRAINING



OFFICIAL UK DISTRIBUTOR OF  
ELECTROELSA HOISTS & MASTCLIMBERS

*Electroelsa*

TAKING YOU UP IN THE WORLD

ANNIVERSARY

**10<sup>TH</sup>**

**DIRECT HOIST**

EST. 2014

DIRECTHOIST.CO.UK ▲ 01724 781647

# Specialist engineering for complex projects

In this issue of Building & Construction Review, we are pleased to feature Swantest as the winner of our Commitment to Excellence award

Swantest offers comprehensive site solutions, specialising in structural testing, investigation, and strengthening for complex construction projects. Its key services include load capacity assessments, geotechnical testing, structural inspections, and specialised hydraulic lifting. The company also provides advanced 3D point cloud surveys, CFRP strengthening, and both balcony and barrier testing, alongside structural surveys and remedial work. These offerings allow Swantest to support the construction industry with tailored solutions, maintaining a focus on precision and innovation for a wide range of structural needs.

Backed by over 15 years of industry experience, we spoke to Mihai Chelmus, Operations Manager, about why their services stand out in the industry.

"Our comprehensive approach to site solutions sets us apart. We offer a complete package, from initial site investigation and surveys to structural testing, remedial and strengthening solutions, and design works if required. Additionally, being part of Swanton Consulting Limited allows us to provide complex design solutions in-house, ensuring seamless integration and high-quality outcomes.

"We continuously look to adopt new technologies and methods to provide cutting-edge solutions. We are UKAS accredited, and have over 15 years of experience with industry



leaders, demonstrating our commitment to quality and dependability.

"We are proud to say that we incorporate a holistic approach to complex projects combined with a faultless end-to-end solutions service."

One testimonial by Sean Morris, Lead Site Manager with Erith, reads, "I have used Swantest on multiple projects over the past 10 years. I have used them to test working platforms, floor

structural loading tests and carry out structural investigations. In this time I have found Swantest to offer a fantastic service which is very friendly and down to earth. The reports and information they supply back to me are always clear, concise and easy to use. It is for these reasons and the great customer service I use Swantest repeatedly on my projects."

Mihai emphasises that "a commitment to excellence means consistently delivering high-quality, reliable, and innovative solutions to our clients." Swantest exemplifies this commitment by achieving excellence across projects, driven by a focus on continuous improvement and strategic investment in advanced technologies. Through rigorous standards of quality and safety, the company maintains exceptional reliability and innovation, ensuring its clients receive the best service and results.

Swantest is a leading designer and installer of Fibre Reinforced Polymer (FRP) products for repair and strengthening of structures. FRP can be used in existing buildings to strengthen elements for increased live loads, the formation of penetrations, or to correct either design or construction flaws. Recently, Swantest has expanded its capabilities in Carbon Fiber Reinforced Polymer (CFRP) Strengthening.

Mihai explained, "This advanced technique involves using high-strength, lightweight carbon



fibre materials to reinforce and strengthen existing structures. CFRP is particularly effective in enhancing the load-bearing capacity and durability of buildings, bridges, and other infrastructure."

Looking ahead, we asked Mihai what the company has planned for 2025. He answered, "In 2025, we plan to further expand our service offerings and continue to integrate advanced technologies into our processes. We aim to strengthen our position as industry leaders in the UK by

enhancing our capabilities and exploring new markets."

T 0370 950 7707  
M 07342 281981  
info@swantest.co.uk  
www.swantest.co.uk



# Business is heating up

Renewable energy heat pumps take natural thermal energy from the air, ground, or water and turn it into heat that can be used for hot water and heating systems.

They are an alternative to the traditional heating methods, such as gas, that are currently used to heat business properties up and down the country, but which are being phased out as part of the 2050 Government net zero targets.

There are three main types of heat pumps available to businesses:

▲ **Air source heat pumps** – These work by transferring heat from the air into a fluid. This fluid passes through a heat exchanger to warm up hot water cylinders for taps and showers, as well radiators and other heating systems.

▲ **Ground source heat pumps** – These circulate a mixture of water and antifreeze through a loop of piping buried outside your business premises. The heat from the ground



is then absorbed into the fluid before being passed through a heat exchanger into the heat pump.

▲ **Water source heat pumps** – If your business

If you combine a heat pump with other renewable energy technologies, such as solar panels, you can make your business premises almost completely self-sufficient through self-generated energy.

is based near a large area of water, a water source heat pump can be used to extract energy from it.

What are the benefits of switching to heat pumps?

- ▲ They will reduce your carbon footprint
- ▲ They will lower your energy bills
- ▲ They cost a lot less to maintain than gas boilers and have a longer life span
- ▲ They can be used as a cooling system in warmer weather

If you would like to find out more about options available for your business, please get in touch with Go Geothermal today on 01388 720228, email: [sales@gogeothermal.co.uk](mailto:sales@gogeothermal.co.uk) or visit: [www.gogeothermal.co.uk](http://www.gogeothermal.co.uk)



## A revolutionary solution for portable and instant hot water



In today's fast-paced, cost conscious and eco-focused world, the SUPA heater emerges as a revolutionary solution for those seeking portable and instant hot water wherever they are.

Traditional electric water heaters often require prolonged heating periods, leading to increased energy consumption and higher costs. The SUPA heater addresses these challenges by offering a rapid heating system that can heat 1,000 litres from 20-40°C in under an hour, significantly reducing wait times and energy expenses or instantaneously heat cold water from a mains feed.

Beyond its impressive performance, the SUPA heater is designed with user convenience in mind. Its plug-and-play setup allows for quick installation, enabling users to enjoy hot water in both a direct fed and recirculation modes without the hassle of complex configurations. Moreover, the heater's

portability ensures it can be utilised across multiple locations, making it an ideal choice for both homeowners and commercial establishments.

Environmental sustainability is at the core of the SUPA Heater's design. By reducing energy consumption, it not only lowers operational costs but also minimises the carbon footprint associated with prolonged heating. This commitment to eco-friendly practices aligns with the growing global emphasis on sustainable living.

In summary, the SUPA Heater stands out as a game-changer in portable instantaneous water heating technology, offering a blend of speed, efficiency, and environmental responsibility. For those looking to offer portable hot water while promoting sustainability, the SUPA Heater presents a compelling choice.

<https://supaheater.co.uk>



## Rooted in quality, cell-grown and 100% peat-free



Rymer Trees and Hedging (RTH) is a tree nursery situated in the heart of East Anglia, which specialises in peat-free, cell-grown UK native trees primarily grown for woodland and hedgerow schemes. We are a small yet dedicated team, working tirelessly to cultivate robust and healthy stock that is ready to be established throughout the UK. Our team is made up of individuals from many different backgrounds, bringing a well-rounded and passionate approach to tree cultivation.



Please visit [www.rymertrees.co.uk](http://www.rymertrees.co.uk) or call 07703 857123

## Shou Sugi Ban® timber cladding

Blackened timbers offer a timeless finish for interior and exterior timber cladding, however, black is not the only option.

If your project demands lighter tones, natural woods or contrasting timbers, the Shou Sugi Ban® catalogue offers:

- ▲ Natural wood, with enhanced grain patterns – Larch Siberiatora
- ▲ Light and smooth finishes – Yūkari Futtō
- ▲ Colour applications for impactful tones – Accoya® Tobu

Shou Sugi Ban® is a market-leading product manufactured in Buckinghamshire.

Our charred timbers are specified by architects as they provide a timeless finish that:

- ▲ Blends new buildings into the surrounding landscape
- ▲ Meets requirements for historical renovations & barn conversions



- ▲ Differentiates original and new features in urban developments
- ▲ Offers a sustainable and insulating building material
- ▲ Delivers a highly desirable aesthetic to architectural projects

Shou Sugi Ban® premium timber cladding has featured in several

RIBA award-winning properties and requires low maintenance to retain its visual appeal.



Please call 01494 711800 Exterior Solutions Ltd for further information, quotes and samples. See the full range on our website: <https://exterior.supplies/charred-timber-cladding>

## Introducing the Eco Clipper FM343



Eco Clipper is known for its efficient and quiet electric mowing systems to maintain large lawns. The unique Eco Clipper mowing system allows it to mow the lawn even in less than optimal conditions, such as with wet grass and weeds.

To meet the demand for more lightweight mowers suitable for most park tractors from 40hp upwards,

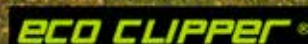
the Eco Clipper FM343 has been developed. This three-part Eco Clipper front mower cuts 343cm wide and folds to a transport width of 170cm. As with the EC-FM4, electricity is provided by a PTO-powered generator behind the tractor.

Contact [www.ecoclipper.com](http://www.ecoclipper.com)

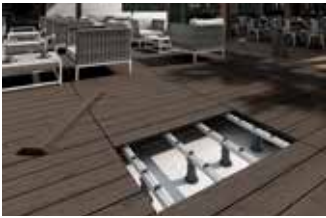
## Efficient electric mowing systems for maintaining large area turfgrass



Eco Clipper FM343 for compact tractors  
[www.ecoclipper.com](http://www.ecoclipper.com)



## Revolutionise your outdoor projects with EXADECK: The ultimate decking solution



Introducing EXADECK, our innovative extruded ceramic decking system with superior qualities to its alternatives, aluminium, composite and timber. EXADECK is durable, looks great and performs exceptionally well for the best value for your money.

EXADECK stands out with its A1 fire rating, ideal for residential and commercial projects. Unlike traditional wood decking, EXADECK is weatherproof and impervious to moisture, making it ideal for damp, windy, and salty environments. It's built to handle heavy foot traffic, making it perfect for busy communal areas.

EXADECK's resistance to extreme temperatures, including frost and ice, ensures it stays in perfect condition all



year round. Its zero-water absorption minimises movement, substructure dependant, unlike composite and timber, which are susceptible to expand and contract. The scratchproof and stain-resistant surface maintains a pristine appearance throughout its lifetime.

Fast and easy to install, and low on maintenance, EXADECK is a cost-effective choice that lets you focus on your creative designs without worrying about durability. A 30 year warranty is included for peace of mind.

**For architects seeking a superior decking solution, EXADECK is the perfect choice. Discover more at: [www.firedeck.uk](http://www.firedeck.uk) and see how EXADECK can transform your outdoor projects.**

## Premium prefabricated portable building blocks and more

Arkem Leisure Ltd, based in Staffordshire, are the UK's leading manufacturer and supplier of premium portable toilet and washing facilities for Campsites, Caravan Parks, Holiday Parks, Marinas, and Sports & Leisure facilities.



saving you both time and money. The full range of unisex showers and toilet blocks can be found on the website, and all come with optional extras.

However, Arkem Leisure doesn't just stop at toilet and shower blocks, they also create beautiful

A clean, well-maintained toilet and shower block is a major attraction for customers seeking a comfortable 'home from home' experience. If you're considering replacing or upgrading your current brick-built facilities, Arkem Leisure offers the expertise and creative flexibility to build according to your precise specifications. From size and colour to interior details, Arkem ensures every requirement is met—

Luxury Lodges. Each Lodge can be made completely bespoke to your needs, whether you want one, two or three bedrooms, as well as elegant kitchens and living spaces featuring log burners and recessed TV screens.

**Contact**  
**T 01543 524553**  
**[info@arkemleisure.com](mailto:info@arkemleisure.com)**  
**<https://arkemleisure.com>**

## FACILITIES TO COMPLIMENT YOUR BUSINESS

UK's #1 SUPPLIER OF PREMIUM PORTABLE TOILET & SHOWER BLOCKS



### THE POSSIBILITIES ARE ENDLESS...

Each block is completely bespoke, meaning you can decide on the layout that best matches your needs.



### GET IN TOUCH TODAY

Tel: 01543 524 553

Email: [info@arkemleisure.com](mailto:info@arkemleisure.com)

[www.arkemleisure.com](http://www.arkemleisure.com)

# Nationwide Louvre Company

Nationwide Louvre Company manufactures high quality aluminium Louvres, Louvred Doors, Louvred Plant Screens, Acoustic Louvres, Acoustic Screening, Aluminium & Timber Brise Soleil/Solar Shading.



Nationwide Louvre Company offers a full supply and installation service to its customers throughout the UK and have completed a number of projects in the Channel Isles and Europe. The business installs bespoke made to measure quality products on residential, commercial and construction projects.

Nationwide Louvre Company specialise in Brise Soleil and louvred plant screening. Brise Soleil projects are supported with computer simulation software to assess the effectiveness of our products in reducing the effects of solar gain on buildings.

Brise Soleil not only enhances the appearance of a building but will provide a much better living or working environment for the building's occupants, with the added benefit of reducing glare to help with computer work and will

reduce the running costs of mechanical ventilation and air conditioning.

Our Screening Louvre Systems are used to hide roof mounted plant and equipment and are available in a range of blade shapes and sizes. Supplied in an enormous range of colours and finishes will screen unsightly equipment and enrich the building façade.

**Contact**  
**T 01922 457204**  
**sales@nlc-louvres.co.uk**  
**www.nlcontracts.co.uk**



## Warwick Buildings



its own premises and in-house team for designing, making and installing the structures, complete with the insulation, glazing and services to make them thoroughly weathertight, cosy and comfortable all year round.

Garden rooms are the new 'must have' for the modern garden, often with bi-fold doors, cedar cladding and curved roofs for added contemporary appeal.

Adding a high-class timber building to your garden or business premises can hugely enhance both the usefulness and the value of your property, not to mention providing a cosy hideaway, quiet workspace, playroom or artist's studio. These versatile structures can be installed at far less cost than an actual house extension and, in most cases, don't even require planning permission.

Warwick Buildings is your go-to company for excellence in quality timber structures from garden rooms to office pods, bespoke for your own wishes and ambitions.

Formed in 1988, Warwick Buildings has a proud history of manufacturing timber buildings for private and commercial use. The company has

Warwick Buildings also make garden offices to suit all the many people now working from home, as well as timber garages, upmarket sheds, studios, therapy rooms and commercial spaces such as timber shop spaces.

Find your inspiration at: [www.warwickbuildings.co.uk](http://www.warwickbuildings.co.uk) or book an appointment at their showroom now to discuss your needs. Warwick Buildings, Nightingale Lane, Southam Road, Long Itchington, Southam, Warwickshire CV47 9AT.

**T 01926 815757**  
**warwickbuildings@outlook.com**  
**www.warwickbuildings.co.uk**

## TIMBER GARDEN BUILDINGS

'Quality Timber Buildings For All Your Needs'



**Warwick Buildings**  
**Nightingale Lane**  
**Southam Road**  
**Long Itchington**  
**Warwickshire**  
**CV47 9AT**



**GARDEN OFFICES**  
**TIMBER GARAGES**

**01926 815757 | www.warwickbuildings.co.uk**

# The Playcraft Group

The UK has seen a surge in indoor recreational spaces, including trampoline parks, Ninja Warrior courses, and soft play centres. Since the first indoor trampoline parks opened in 2014, over 150 have sprung up, becoming popular for children's parties, clubs, and corporate events. Inspired by the ITV show, Ninja Warrior courses have also emerged in major cities, offering physical obstacle courses for children and teenagers. Soft play centres, known for their slides, ball pits, and play areas, provide year-round fun for babies, toddlers, and children,



making them ideal for family meet-ups and parties.

The Playcraft Group, based in South Wales, stands out in this industry with 40 years of experience in children's play and 25 years in play centre attractions. They offer comprehensive services, from design and manufacturing to installation and maintenance of various play facilities, including trampoline parks, climbing walls, and adventure playgrounds. Their high-profile clients include Disney, Land Rover, and Cartoon Network. The company emphasises inclusivity, designing wheelchair-friendly soft play sections and sensory spaces to support neurodiverse children.



free 360° advice on business plans, planning applications, insurance, and franchising. Currently, they are working on a wheelchair-friendly soft play section, adapting materials to accommodate electric and manual wheelchairs, creating an inclusive space for all children.

To start your indoor leisure franchise journey, contact Mike Broadfield at Playcraft Group for expert guidance and support.

**T +44 (0)1792 422818**  
**mike@playcraft.wales**  
**www.playcraftgroup.wales**

Founder Mike Broadfield highlights their bespoke installations across the indoor and outdoor sports and leisure sector. They provide



Quality Rooflights



info@nextgenrooflights.co.uk



Your Trusted Advisors 01223 792 244 46 Leyton Avenue, Mildenhall, Suffolk IP28 7BL



# Quality bespoke door & panel manufacturers

Earlier this year, Pandor proudly celebrated its 10th anniversary as a leading UK manufacturer of bespoke doors and panelling. Founded in 2014 by Mike Hill, the company has steadily grown, serving diverse sectors, including commercial buildings, offices, hospitals, and residential properties. Its state-of-the-art production facility in Sittingbourne, Kent, is equipped with advanced machinery to ensure top-quality manufacturing and finishing for every project.



In the wake of the Grenfell Tower tragedy, Pandor has taken extra care to manufacture fire door sets that meet FD30, 60, 90, and 120 certifications, offering all clients peace of mind with full certification and traceability. The company also offer a variety of finishes, including laminated, painted, and veneered options, tailored to clients' specific needs.

Pandor takes great pride in its ability to tackle complex projects and meet tight deadlines, as seen in its recent work on an oversized mansion door and a crucial government project. As the company looks ahead, it is committed to continuing its investment in cutting-edge machinery and sustainable practices, such as using FSC-certified wood and water-based finishes, ensuring that it remains at the forefront of quality and innovation in the industry.

T 020 8279 7611  
M 07909 530007  
mike@pandor.ltd  
<http://pandor.ltd>

With over 40 years of expertise in the fire door industry, Mike Hill has always emphasised a customer-first approach. Pandor is committed to listening closely to its clients and delivering on their needs promptly, which has earned them the trust and loyalty of many long-term customers. Specialising in made-to-order fire doors, decorative doors, frames, and related products, Pandor focuses on certified fire doors that are essential for passive fire protection systems.



## Traditional Joiners using modern machinery & techniques. Makers of Hardwood and Accoya™ Windows, Doors and Staircases

Established in 1968, Croxford's remain a family owned business committed to the finest quality craftsmanship which includes hand made hardwood doors, timber windows, staircases and bi-fold/patio doors. You will find our work all over the UK.

windows not only look good and wear well, but with the option of traditional or modern hardware and highly efficient double glazed units they also help you save energy. Please call or visit our website for more information.

We supply for both commercial and private projects from the most modest new build/renovations to the most elegant of stately homes. Our timber doors and



Tel: 01484 850892 Web: [www.croxfords.co.uk](http://www.croxfords.co.uk)

01535 606794

zac@butterfieldofskipton.co.uk  
[www.butterfieldofskipton.co.uk](http://www.butterfieldofskipton.co.uk)



## Welcome to Butterfield of Skipton

A third generation family run business established 1965

We can offer complete turnkey building projects for steel frame buildings



Originally specialising in machinery removals, installations and transportation, we now work in a variety of different areas as well:

- Structural steel fabrication and installation
- Stainless steel fabrication
- Staircases
- Bespoke architectural steel work
- Glass balustrades & balconies
- Cladding
- Installation of structural metal decking
- Contract lifting & lift planning
- CAD drawings
- Steel sales

# Hebridean housebuilder specifying SterlingOSB Zero on sustainability grounds

Situated seven degrees west of the Greenwich Meridian, and exposed to some of the harshest weather conditions anywhere in the British Isles, the Hebrides present a challenging location for building projects, prompting a recently-established building company to adopt offsite construction technologies which make full use of the technical and environmental benefits of West Fraser's SterlingOSB Zero.

70-22' Systems was established in 2022 by three business partners whose experience encapsulates architecture, education and manufacturing amongst other skills, and who decided to develop their own highly-insulated, modular timber building system. Growing organically by providing bespoke packages to clients of parent business, Fraser Architecture, 70-22' has already delivered properties on the Outer Hebrides; and has more than half a dozen schemes of different sizes in the pipeline for the coming year.

The trademarked system has been designed specifically to avoid the need for craneage, due to the inaccessibility of many sites, while the cellular component modules take the form of wall blocks, lintels and beams to span larger openings. The SterlingOSB Zero is CNC machined and assembled in the workshop before being filled with Warmcel recycled paper insulation.



Significantly, the 70-22' Systems design personnel were determined from the outset to utilise the West Fraser board because of its formaldehyde free formulation and the fact the material is manufactured in the North of

Scotland, using mainly locally sourced softwood from well managed forests.

70-22' Systems' co-founder and Commercial Director, Alex Durie, commented, "We use West Fraser's SterlingOSB Zero to construct our ecological building components, that are prefabricated in our workshop utilising CNC technology to achieve 0.1mm tolerances for each beam and block. It is the ideal material to use as the shell for our components, which are then filled with recycled insulation to achieve a building system that can achieve market leading thermal performance, with a U-value of 0.1 W/m<sup>2</sup>k, and excellent air-tightness, while maintaining a breathable floor, wall and roof construction. The added bonus of being formaldehyde-free, OSB enables us to build ecologically, utilising timber grown and processed in Scotland as we aim to limit the travel miles in each of our builds. The OSB produced by West Fraser has performed very well in our structural testing, with our system proving to be 1.6 times stronger than a traditional timber frame – and as our system arrives on-site as a component that is pre-fabricated, pre-insulated and designed for manual handling, it is much quicker to assemble."

Not only do all of the 70-22' Systems structures exceed the thermal requirements of Section 6 to the Building



Standards, Scotland, but can also be delivered as a Passivhaus compliant solution where the client or planning consent demand it. In the medium to long term, the business is building a pattern book of standard house types and has plans to establish a pilot plant on the mainland. The company will also be showcasing its system at the Self-Build and Renovation exhibition in Aviemore this autumn.

SterlingOSB Zero is available in a range of sizes and thicknesses up to 22mm as well as a T&G version ideal for flooring and decking applications. The high performance panel product, free of added formaldehyde, has also earned BBA approval and meets the requirements of NHBC Technical.

As is always the case, West Fraser's experienced technical team is available to aid with product specification, while downloadable data sheets are available at: <https://uk.westfraser.com>

For further information, call 01786 812921 or visit: <https://uk.westfraser.com>



## YOUR NET ZERO PARTNER

Helping organisations on their journey to Net Zero in a measurable, meaningful and potentially self-funding way.

**Your Carbon and Procurement Partner**  
At Auditel, we believe in trying to keep it simple and suggest the immediate goal of most organisations should be to achieve a robust, trustworthy, and meaningful carbon management plan. Once that is done most other objectives tend to fall into place.

**The introduction of Carbon Border Adjustment Mechanism (CBAM)**  
A landmark step towards achieving Europe's ambitious net-zero objectives CBAM represents a significant shift in global trade dynamics. For businesses, it offers both a challenge and an opportunity to lead in sustainability and demonstrate a commitment to global climate goals.

For more information, please contact our Sustainable Business Specialist:  
Munminder Gill FCMA MSc  
E: [munminder.gill@auditel.co.uk](mailto:munminder.gill@auditel.co.uk)  
T: 07970 411243

[www.auditel.co.uk](http://www.auditel.co.uk)





75 Years of Excellence  
**Horrods**  
Engineering ~ Safety ~ Efficiency

3 Generations of 'our family business'

75 Years of Research & Development have allowed us to hone our expertise and to produce design and engineering excellence.



## *Swift Melt Mastic Asphalt Mixer*

Reinstatement materials / Asphalt Materials

Efficient - effective - safe.

Thermostat control.

## Hot Air Rubberised Materials Melters



Gas-fired (left) or 3-Phase fully electric (right) machines are available.

## Safety Melt Series 4 Thermostatically controlled bitumen boilers

Safely heating bitumen - decanting & loading



# Base Structures create stunning new fabric façades for Printworks in Manchester

Base Structures is proud to announce our collaboration with Printworks and John Turner Construction on the groundbreaking redevelopment of Manchester's iconic entertainment venue. This project features three distinct fabric schemes adorning both the internal & external elevations of the site.

The internal façade artwork, created by Manchester-based artist Alex Sylt, serves as a central public art piece within the venue. Utilising our large format fabric façade system and fabric printing expertise, we brought Sylt's vision to life, adding a dynamic element to the venue's interior.



Working at this prominent city centre complex site posed challenges inside and out with restrictive pedestrian management which had to be managed with careful planning and limited access via the narrow surrounding streets. To overcome this, Base Structures engineered a steel frame on Dantzic Street, to install five large printed screens by hand. Also given the congested nature of the site and the intricacy of our works, careful co-ordination was essential, particularly while working alongside the digital ceiling installation.

Printworks boasts an impressive history, and was once the business premises of several news outlets. The site housed a printing press until the late 1980s, and through much of the 20th Century, was the largest newspaper printing house in Europe and overtime has become a popular venue for shops, bars, restaurants and events. Following this extensive renovation, it now features updated artistic façades and a new impressive digital ceiling, the largest in Europe.



The client required the internal artwork to be framed by a flashing surround with hidden fixings. We achieved this with innovative brackets and connections, incorporating fifteen speaker panels into a flush façade. These panels were designed to be removable and held with magnets,

concealing all fixings. We were very happy to be able to develop an efficient system of work that resulted in a quality build, ready in time for the renovated Printworks grand opening.

Andy Traynor, Director at Base Structures and Head of Installations and Health & Safety, remarked, "We were delighted to be part of this artistic and iconic redevelopment of a prestigious city centre location. Embracing creativity, we have enjoyed being able to bring large format art to the public. This renovation project has created a truly unique immersive

experience and destination attraction to boost the public engagement with the space.

"The success of this project showcases the skills of the Base team, the breadth of what's on offer at Printworks and what stunning results can be achieved in terms of updating our city centres and community spaces."



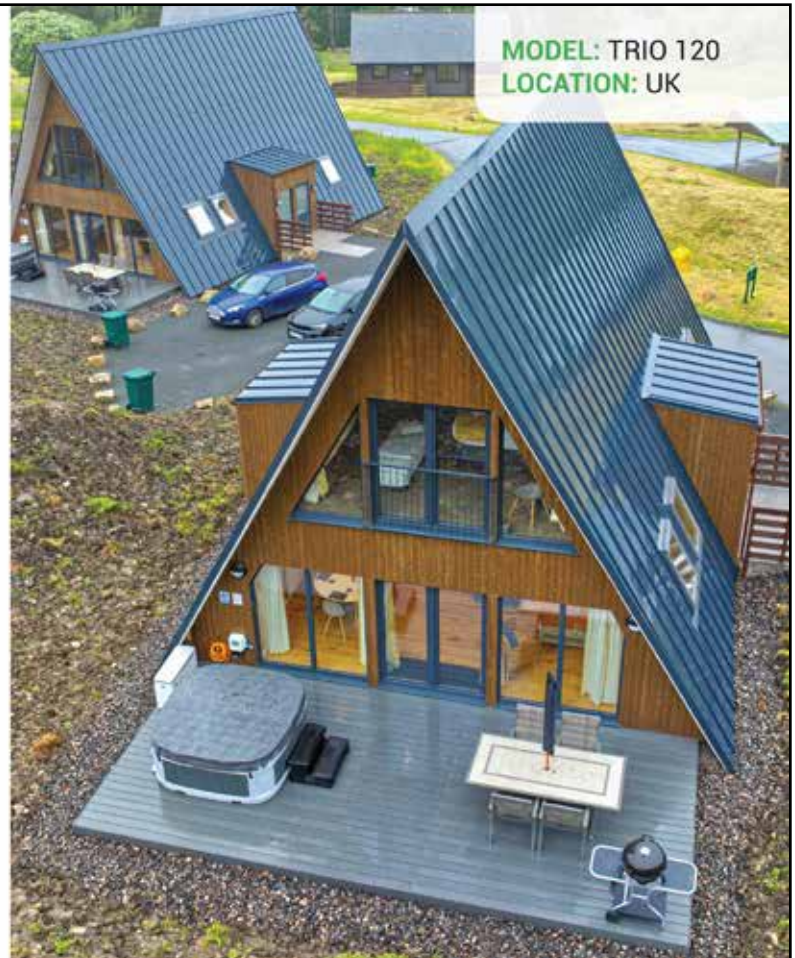
For more information, further quotes or images, please contact Base Structures at: [mail@basestructures.com](mailto:mail@basestructures.com) and [www.basestructures.com](http://www.basestructures.com) – for information about Printworks Manchester, visit: <https://printworks-manchester.com>



Discover the beauty of minimalist living with Avrame's eco-friendly kit homes. Our A-frame structures are designed for simplicity and sustainability, providing a harmonious blend of form and function. Whether nestled in the countryside or perched on a city rooftop, Avrame homes offer a unique living experience, emphasising natural light, open spaces and a connection to the outdoors. With customisation options, you can create a space that truly reflects your lifestyle. Choose Avrame for a home that is as environmentally conscious as it is aesthetically pleasing!

Live smart, live sustainably, live Avrame!

[WWW.AVRAME.CO.UK](http://WWW.AVRAME.CO.UK)



MODEL: TRIO 120  
LOCATION: UK

# Webber Engineering



Webber has recently worked on the new Everton FC stadium at Bramley Moore dock and works for other large clients in the construction sector.

Webber also works with industrial blue-chip clients such as Jaguar Land Rover and Knauf Insulation, keeping their core business moving while Webber carries out essential maintenance.

Webber is one of the fastest growing companies in the North West of England, employing skilled fabricators, welders, fitters and steel erectors. Webber has the in-house facility to design, fabricate and install steelwork and pipework. Webber also specialises in stainless steel and glass balustrades.

Webber had the pleasure of participating in the Stockport Interchange project, working on the impressive Stainless Steel and Glass Oculus, which can be seen in the photo. Webber also designed, fabricated and installed the feature staircase in the Interchange, equally as impressive as the Oculus. This is just one of the multitude of projects in which Webber is involved.

**For further information on Webber's products and services, please contact us on 0151 548 5777, or have a look at Webber's website: [www.webber-engineering.co.uk](http://www.webber-engineering.co.uk) or email us at: [mail@webber-engineering.co.uk](mailto:mail@webber-engineering.co.uk)**

**“Architecture is basically a container of something. I hope they enjoy not so much the teacup, but the tea.” Architect Yoshio Taniguchi**



For over 20 years, Gromtec Europe Ltd has been involved in the manufacture and supply of mini floor boxes for a wide range of projects from airports to zoos, as well as a growing number of domestic projects. The modern built environment demands safe and plentiful access to power points. While wall sockets are typically the preferred location for power sockets, floor boxes provide power and data points for larger open plan areas, such as offices and concourse spaces.

commonly fitted into the floor box lid. We have over the years seen an increase in the specification of mini floor boxes in large domestic projects. Clients are seeking discreet access to power in the centre of their living spaces for a wide range of applications.

These thoughtful inputs greatly enhances and elevates our living and working environments and makes them safer by eliminating unsightly and dangerous trailing cables.

Gromtec specialises in the supply of mini floor boxes where the surface finish is as important as the boxes function. Like a chameleon, the floor box must often blend into the overall floor finish. Inserts such as wood, tile, or marble are

**If you require more information about our 'mini' floor box range or our IP66 Simonbox product, please see our website: [www.gromtec.com](http://www.gromtec.com) or call our office: 02032 867949, we will be happy to help. Enjoy the tea!**

## Case study



**C40 Curaflex Doyma Gaskets**  
One of the UK leading installers of pre-insulated district heating systems, Vital Energi Utilities Ltd, use Doyma Curaflex C40 Gaskets to provide a water and air tight seal for all below ground building entries. The specialist installations can be subject to slight movement through expansion and contraction as the system heats and cools.

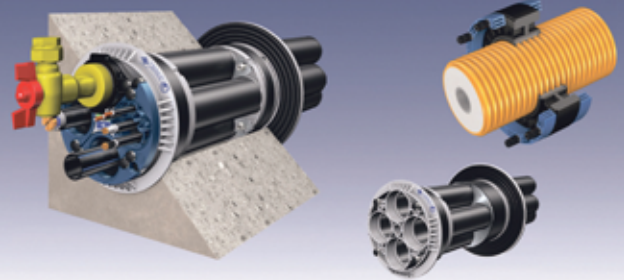
The Curaflex C40 Gasket is designed to accept the axial movement that may occur during the operation allowing Vital Energi to seal both the opening of the building

façade as well as the HDPE outer-casing.

Vital Energi's Managing Director, Ashley Walsh, noted, "This provides our installation with an excellent termination. It provides confidence both to ourselves and our clientele that we'll leave the fully installed works sealed from any moisture ingress while providing a product that has the flexibility and capability to work alongside our very complex pre-insulated products."

**For more information visit: [www.servicesealingsolutions.co.uk](http://www.servicesealingsolutions.co.uk)**

### Service Sealing Solutions Ltd – suppliers of DOYMA products



Service Sealing Solutions Ltd are the sole UK distributor of DOYMA products. Wherever services are installed through walls, ceilings or floors, penetrating water may cause damage to buildings. Lack of attention to the points of entry of pipes and cables into the building can have serious results: damp cellars, equipment damaged by water ingress and high repair costs. Service sealing systems ensure professional and perfect pipe sealing, thus presenting excellent preventative measures against structural damage.



01952 510050 [www.servicesealingsolutions.co.uk](http://www.servicesealingsolutions.co.uk)  
[sales@servicesealingsolutions.co.uk](mailto:sales@servicesealingsolutions.co.uk)

# Glass Reinforced Plastic



Stormking specialises in providing Glass Reinforced Plastic (GRP) products to the construction & house-building industries across the UK. Our bespoke solutions, crafted with innovation, unequalled quality, and efficiency, stem from our profound expertise in GRP products.

To view more of the range of products available, visit our website at: [www.stormking.co.uk](http://www.stormking.co.uk)

We offer:

- 1. Comprehensive Solutions** – Our expansive range of GRP products caters to varied requirements.
- 2. Dedicated Support** – Our experienced team assists you through every step, ensuring an unparalleled service experience.
- 3. Nationwide Delivery** – We guarantee timely delivery of our GRP products across the UK with our own fleet of vehicles.
- 4. Extensive Portfolio** – Our wide selection of GRP products showcases our capacity to meet diverse project specifications.
- 5. Assurance of Quality** – We adhere to stringent quality standards, reinforcing our commitment to excellence.
- 6. High-Volume Manufacturing** – Our robust manufacturing process ensures we can meet high-volume demands promptly and efficiently.

# Goland Recruitment



Here at Goland Recruitment Ltd, we have extensive network and experience in placing exceptional candidates for the role you require. Whether it be in Construction, Retail, Hospitality or Commercial we are at your disposal to do the leg work for you.

Save time and money when recruiting for temporary or permanent/full-time position as we spend a considerable amount of time reading through the specifications and searching for exceptional candidates.

Please give us a call or drop us an email today if you require our assistance and we will do our best to get you the right person for the job at a rate that suits your budget.

Our full time placements fees are normally 12% to 15% depending on the role and the salary, we now however have a set rate for all permanent roles placements of 8% no matter what the salary, but for your first two placements we are running a special offer of 5% across the board so don't miss out.

Please keep us in mind for all your Recruitment requirements, much appreciated.

For more information, please see details below:  
**T 01908 102078**  
[info@goland.group](mailto:info@goland.group)  
[www.goland.group](http://www.goland.group)

# STEELO

## Structural Steel Fabricator

ON-SITE

ON-TIME

EVERYTIME

Best Structural Steel Fabricator - London 2022, 2023 & 2024

0208 569 8144

Construction & Engineering

[sales@steelo.co.uk](mailto:sales@steelo.co.uk)

[www.steelo.co.uk](http://www.steelo.co.uk)



**SFS**



Download the brochure...

# Tackling difficulties in thick insulation layers

Optimise Window Installation with JB-D Plus

Maximise window performance with the JB-D Plus: Simplify, speed up and enhance thermal efficiency by installing windows within the insulation layer.

Visit [uk.sfs.com](http://uk.sfs.com) for more information.



# THE POWER OF EVOLUTION

**Bona Mega EVO – Faster, better and safer floor surfaces**

Bona introduces Bona Mega EVO, the next generation 1K waterborne lacquer with a new state-of-the-art crosslinking technology that activates when applied. The unique, non-yellowing formula delivers faster curing with excellent resistance to scratches, wear, and chemicals. With VOC levels below 3%, the lacquer contributes to healthier working conditions with a lower impact on indoor air quality.

**Try the new step for medium wear wood floors, try Bona Mega EVO!**

bona.com  
info.uk@bona.com  
Tel: 01908 525150



**Bona®**



## Table Place Chairs

Hospitality Furniture For Any Location

- Loose & Floor Fixed Furniture
- Space Zoning Solutions
- Product Innovation & Design
- Manufacture & Assembly
- Warehousing & Site Delivery

[tableplacechairs.com](http://tableplacechairs.com)

03301222117 | [info@tableplacechairs.com](mailto:info@tableplacechairs.com)

